



GLPI Network Subscriptions VS. GLPI Network Cloud

How to choose?



About GLPI official editor:



Green IT



Research

Tools

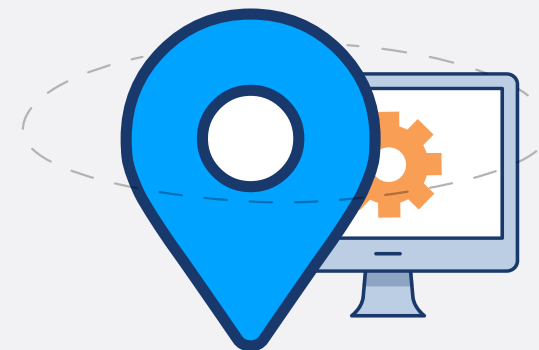


Editor of open source solutions
(including **GLPI!**) & e-commerce
and remote work tools provider.

Software



How do you want to use GLPI?



for on premise
installations



for cloud installations

What is included to support?

Services:	GLPI Network Cloud	GLPI Network Subscription (on-premise)
Unlimited bug fixes	✓	✓
Integration, administration,	<u>Partners*</u> or <u>FAQ</u>	<u>Partners*</u>
Exclusive plugins GLPI Network	✓	Check the <u>Subscription** level</u>
Community plugins	Marketplace compatible***	Selected
Updates	✓	<u>Partners*</u>
Backups	✓	<u>Partners*</u>
Server maintenance	✓	<u>Partners*</u>
IT assets	Unlimited	Check the <u>Subscription** level</u>
Website	<u>GLPI Network Cloud</u>	<u>GLPI Network Subscriptions</u>

*Partners: service is provided for extra fee by official partners-integrators. See the list here: <https://glpi-project.org/partners/>

**Subscription level: consult the levels on website <https://glpi-project.org/subscriptions/>

***Marketplace compatible: every plugin compatible with built-in Marketplace

Prices:



GLPINETWORKCLOUD

19 euros /

per IT agent / per month

IT assets are free of charge

GLPI Network Subscriptions

Basic
1.200 euros
per year

up to 10
IT agents

up to 500
IT assets

Standard
3.600 euros
per year

up to 50
IT agents

up to 5000
IT assets

Advanced
12.000 euros
per year

from 51
IT agents

from 5001
IT assets

*An additional 20% tax (VAT) will be applied for customers in France;

**IT agents = GLPI users with [Standard interface](#) ;

***IT assets: computers, laptops, thin clients, nano computers, physical, virtual, hypervisor, appliance servers.



GLPINETWORK

Doubts? You can test GLPI 45 days for free!



✓ Go to GLPI Network
Cloud: [click](#)

✓ Create your
instance in 2 minutes!

✓ Questions? Check
our [FAQ](#)



Contact us:

polina@teclib.com