

SoftExpert BPM

Efficient processes. Effective management.



[Challenges](#)

[Solution](#)

[Benefits](#)

[Compliance](#)

[Features](#)

[About
SoftExpert](#)

Soft Expert[®]
Software for Performance Excellence



Do you have **visibility of your business?**

Are your processes **aligned to corporate strategy?**

Do you **know the risks** of your business?

How to **detect and respond to business** events as they occur in your company?

A person in a white lab coat is pointing at a blue board with several sticky notes. The word "Challenges" is written in large, bold, yellow letters over the image.

Challenges

- Promote organizational agility
- Ensure regulatory compliance
- Turn process data into knowledge
- Increase employee engagement and collaboration
- Foster innovation and process improvement



Solution

Innovative process modelling tool

Easily model your business processes using the Business Process Modelling Notation (BPMN). Use drag-and-drop features to adjust process flows and meet business needs.

Automate enterprise Forms

Create and automate responsive and no-code forms, which work on mobile devices, natively with no extra time or effort. Ensure the right data is collected anytime, anywhere.

Robust platform for process execution

Instantly run processes as soon as design is complete. Automatically assign tasks, execute business rules, integrate applications and enhance process efficiency.



Solution

Real-time task manager

Track running workflows, re-assign tasks, and view process performance and SLA status with SoftExpert Suite control panel.

Dynamic analytics and reporting

Analyze workflow data and measure the efficiency of your processes. Extract trends and find meaningful insights to make business decisions faster and more accurately.

Continuous process improvement

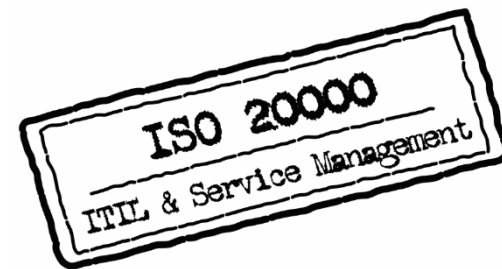
Address bottlenecks and inefficiencies. Focus on improvement opportunities to bolster productivity and deliver better business performance.



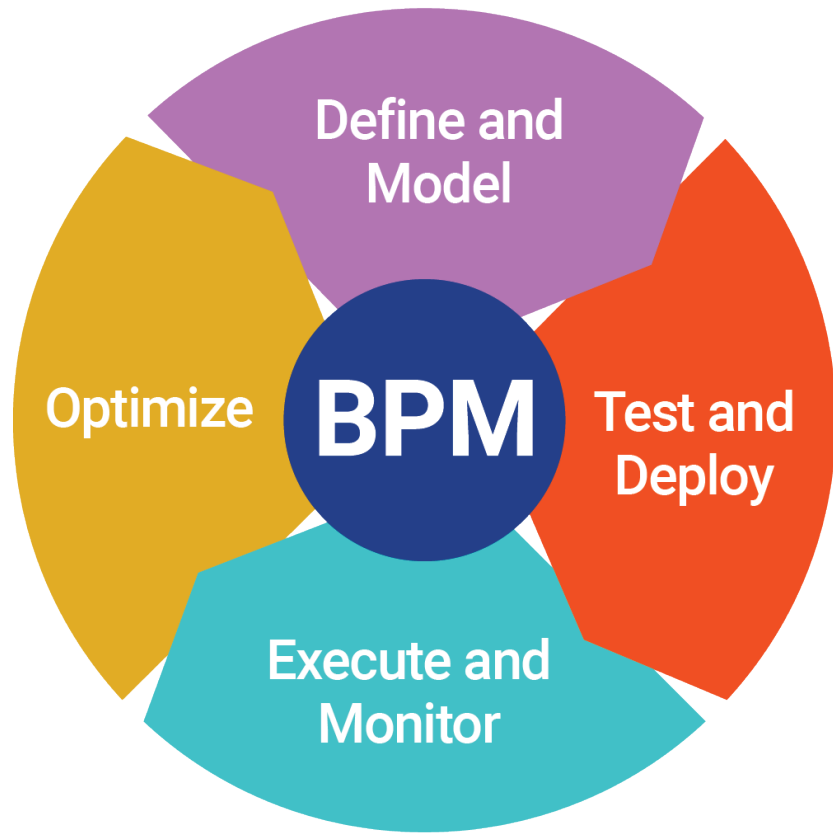
Benefits

- Centralizes the organization's processes and makes outcomes more visible
- Provides the fastest responses to customer needs
- Mitigates risk exposure with more control points
- Reduces day-to-day breaks, failures, rework and overtime costs
- Enables simulation of different scenarios to optimize business processes
- Allows for quick identification of bottlenecks and improvement opportunities
- Strengthens compliance with multiple standards and regulations
- Simplifies communication and boosts operating efficiency
- Minimizes deviations and redundancies, enhancing productivity across the organization

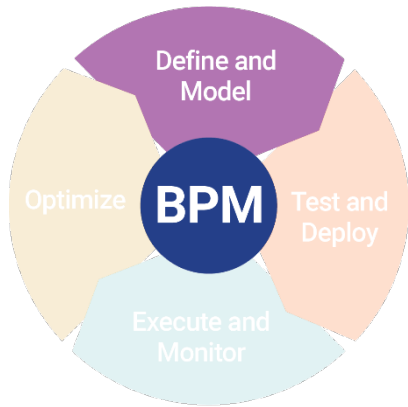
Compliance



Features



**Manage the entire
Business Process lifecycle**

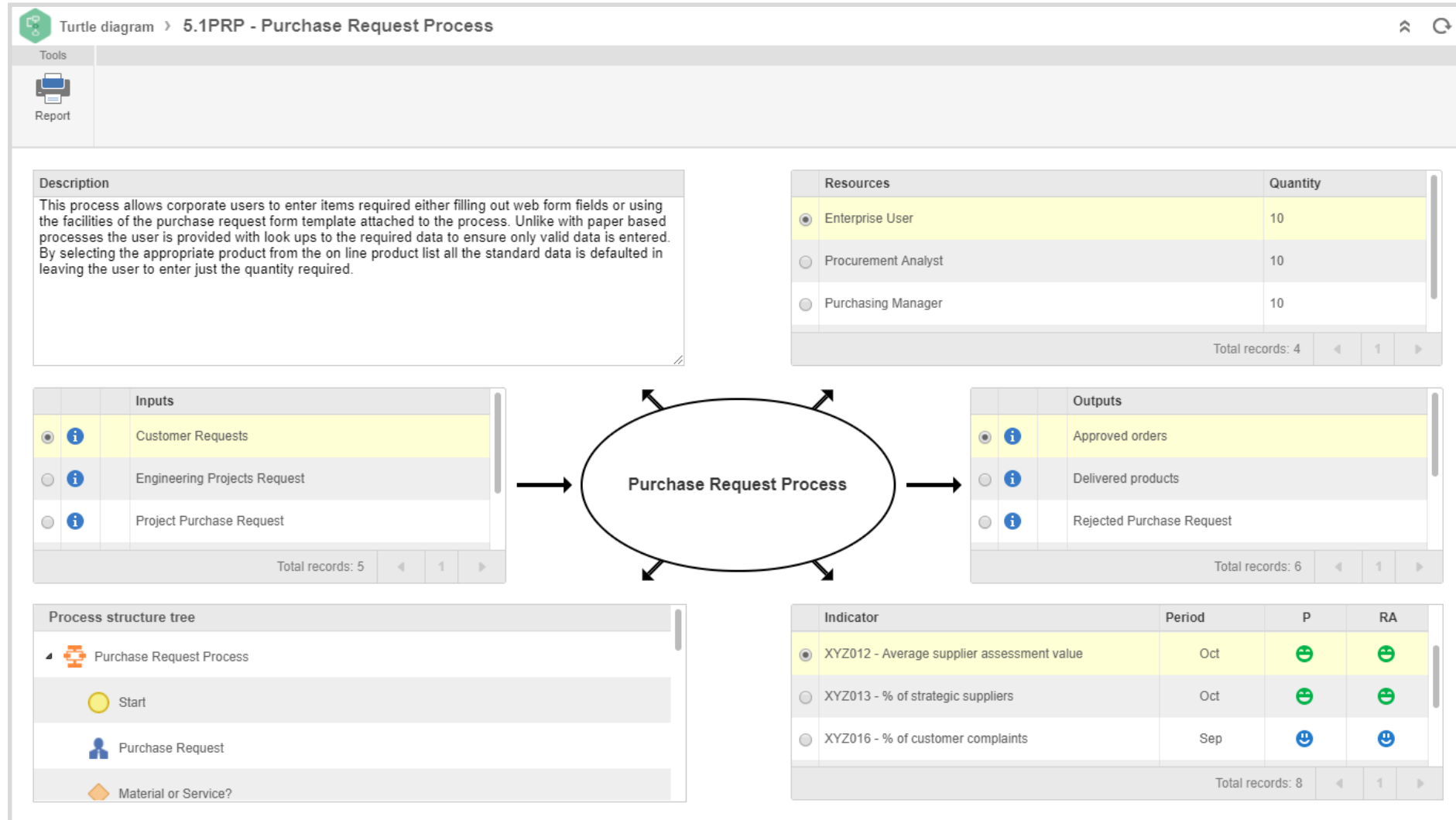


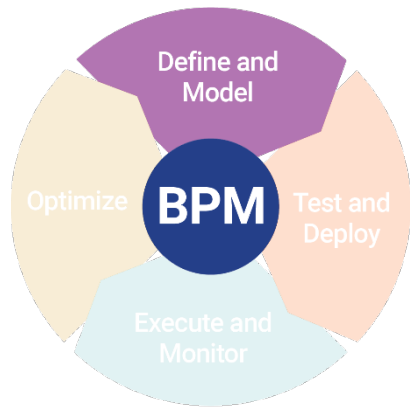
Define

Model

Define

Discover all process-related information, such as inputs/outputs, documentation, resources, KPIs and more.



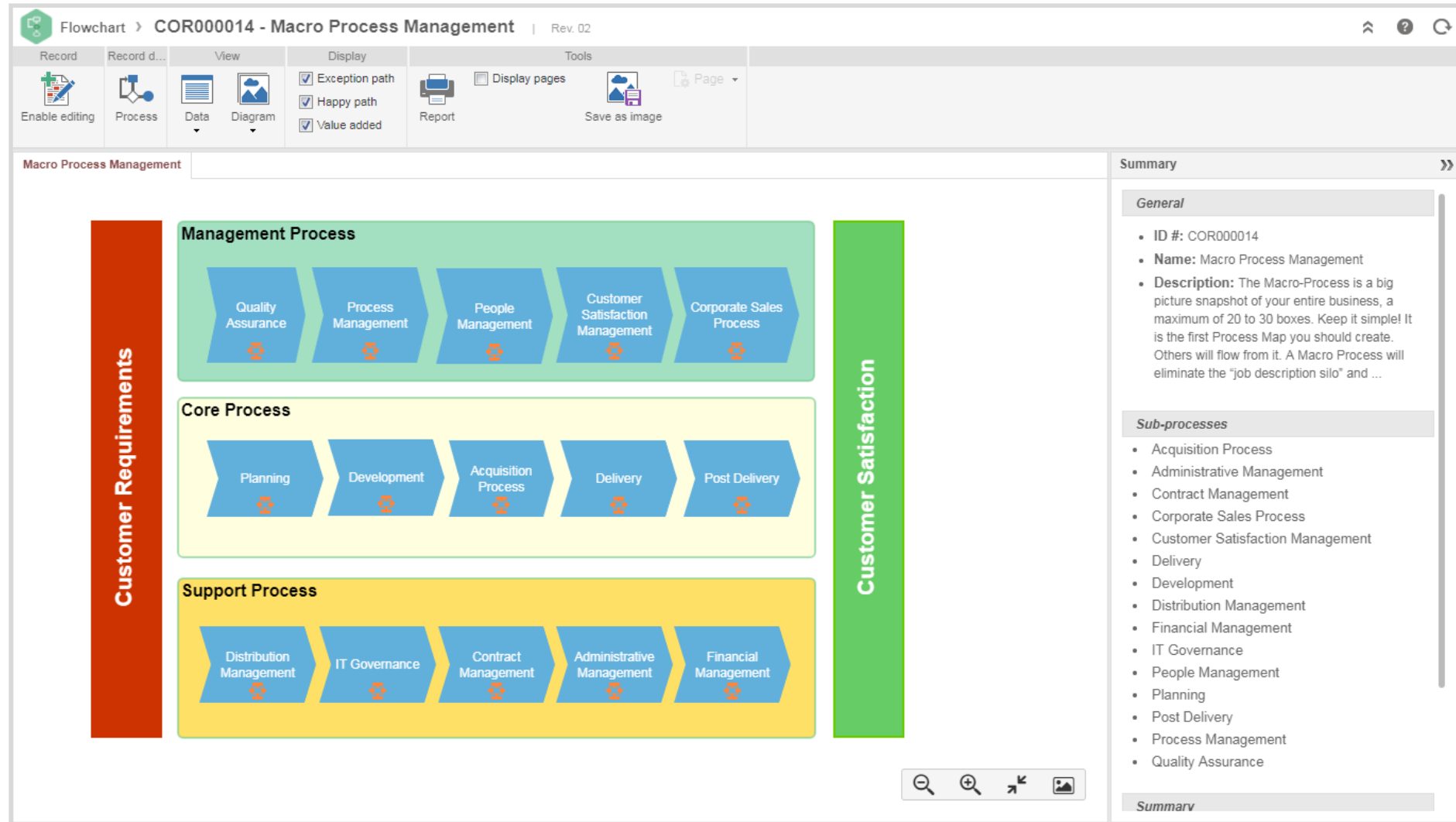


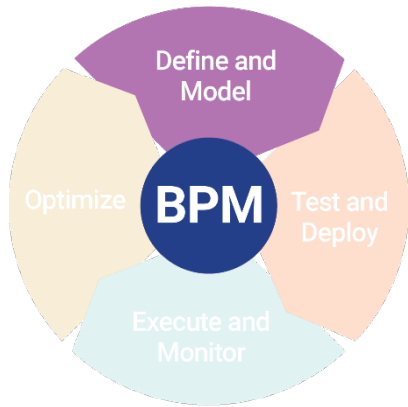
Define

Model

Model

Model the macro process to represent the value chain.



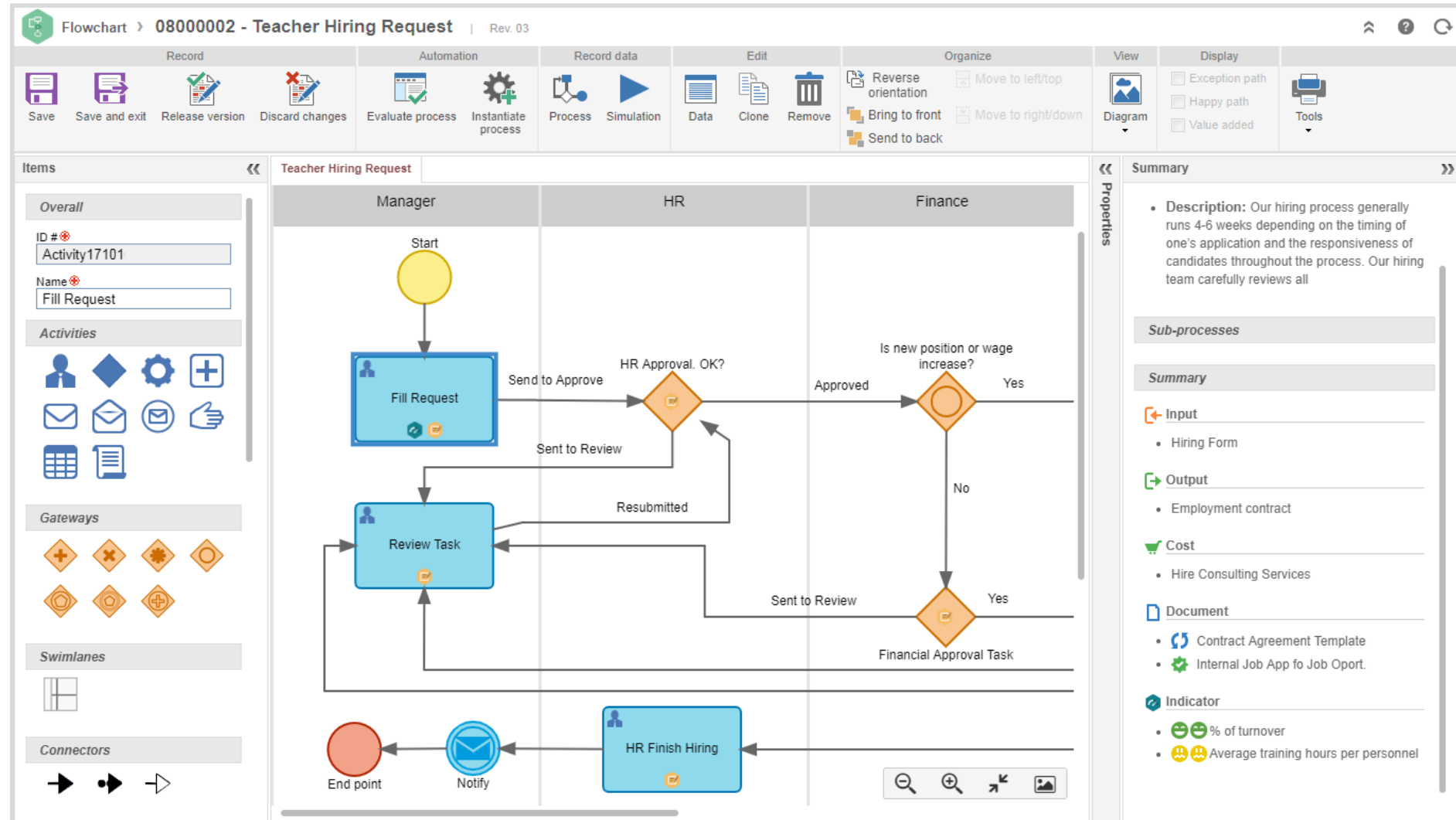


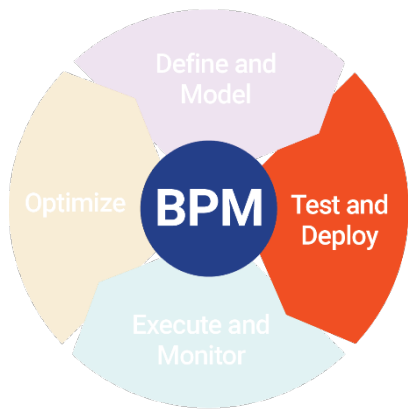
Define

Model

Model

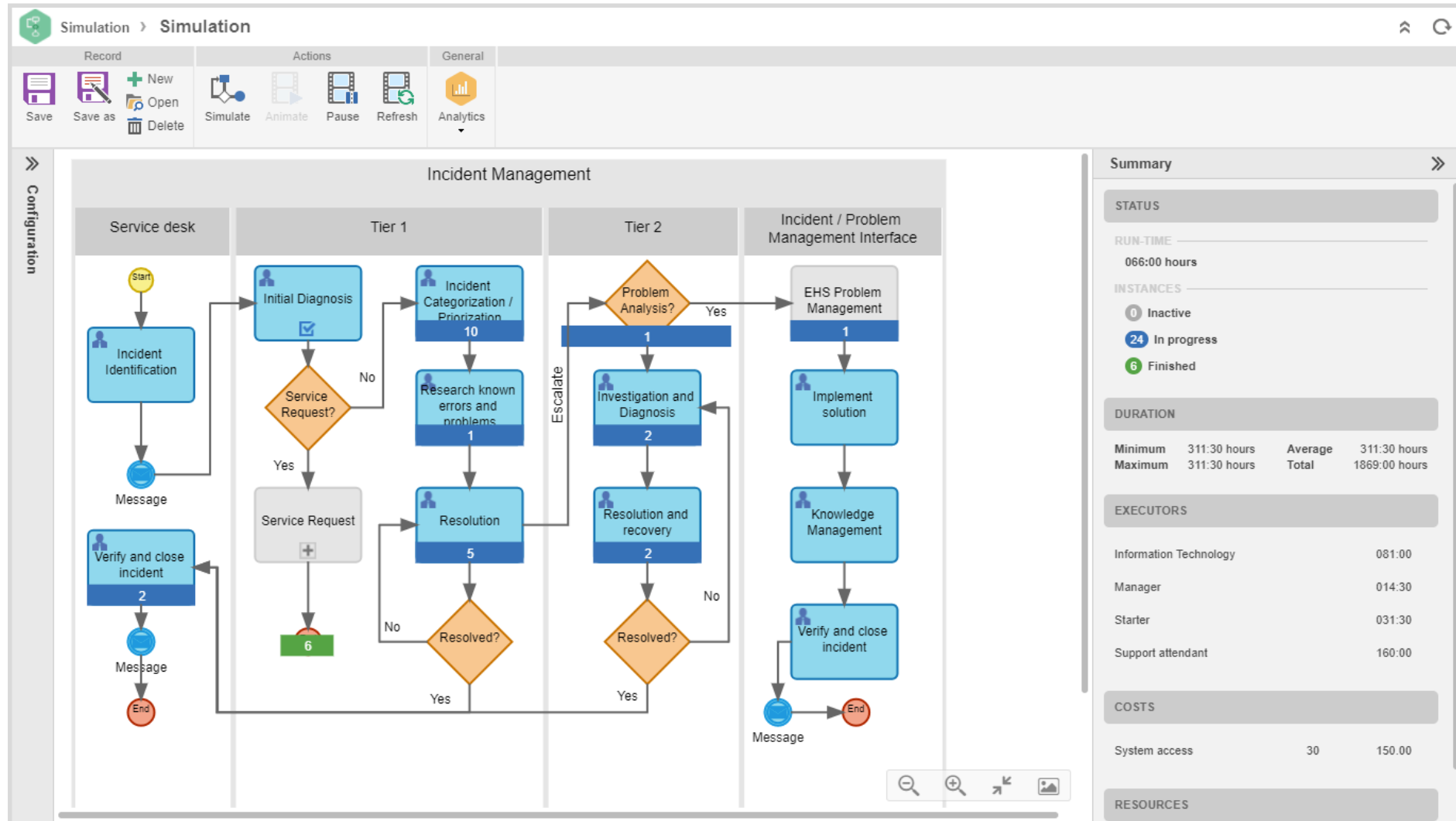
Model TO-BE processes using the Business Process Modelling Notation (BPMN).

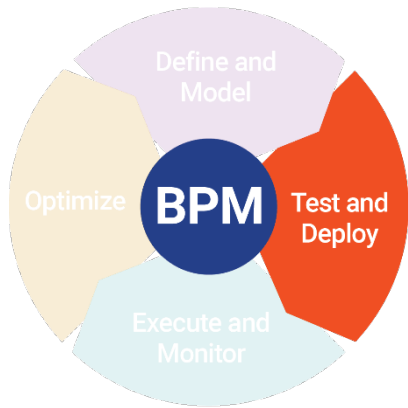




Simulate

Fine-tuning of modeled "WHAT-IF" processes.



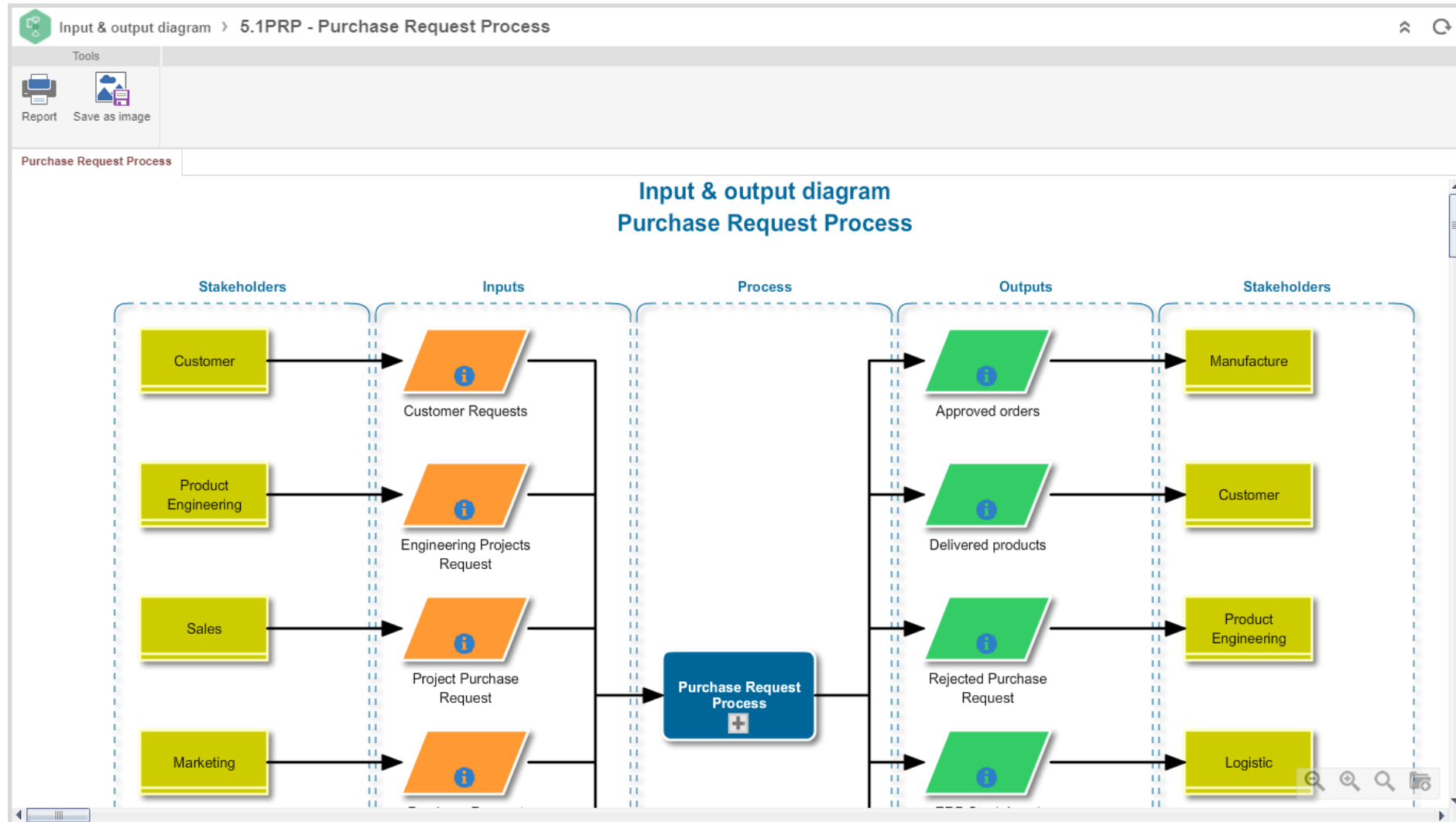


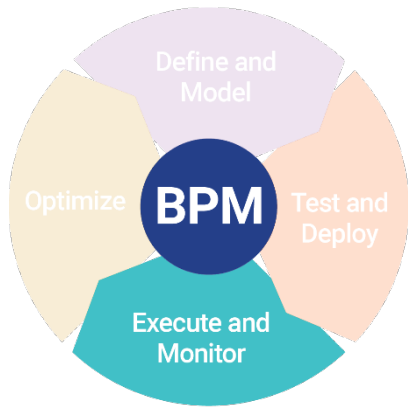
Simulate

Deploy

Deploy

Publish processes and related documents.





Execute

Monitor

Execute

Automate workflows and business rule execution.

Activity execution > 000495 - Alaska Group | Supplier Registration Process [Rev. 01] | Execution

Record | Actions | Record data | Tools

Save | Submit Information | Previous step | Comment | Report | Form report

NAVIGATION

- Submit Supplier Information
 - Supplier Registration
 - Comments
- Attachment
- History
- Flowchart
- Security

SUBMIT SUPPLIER INFORMATION > SUPPLIER REGISTRATION

STARTER Tetsuo Kendo SLA 17,45% DEADLINE OF THIS ACTIVITY 9/21/2020 08:00

Supplier Registration Form

SUPPLIER INFORMATION

SUPPLIER NAME: Alaska Group #ID: 000495

E-MAIL: alissa@acme.com PHONE: (536) 621-6381

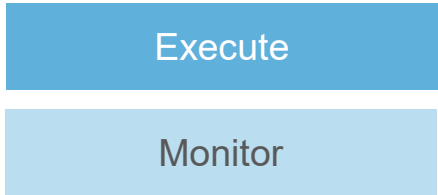
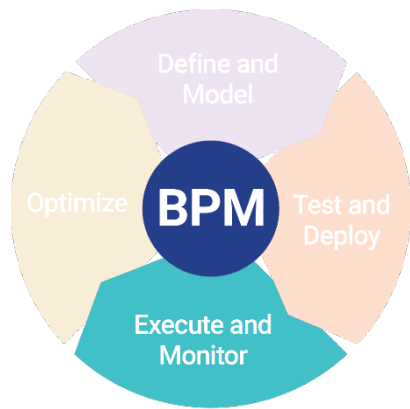
ZIP CODE: 65043 STREET: Jefferson Av CITY: Frisco STATE: Texas

PRODUCT INFORMATION

+ -

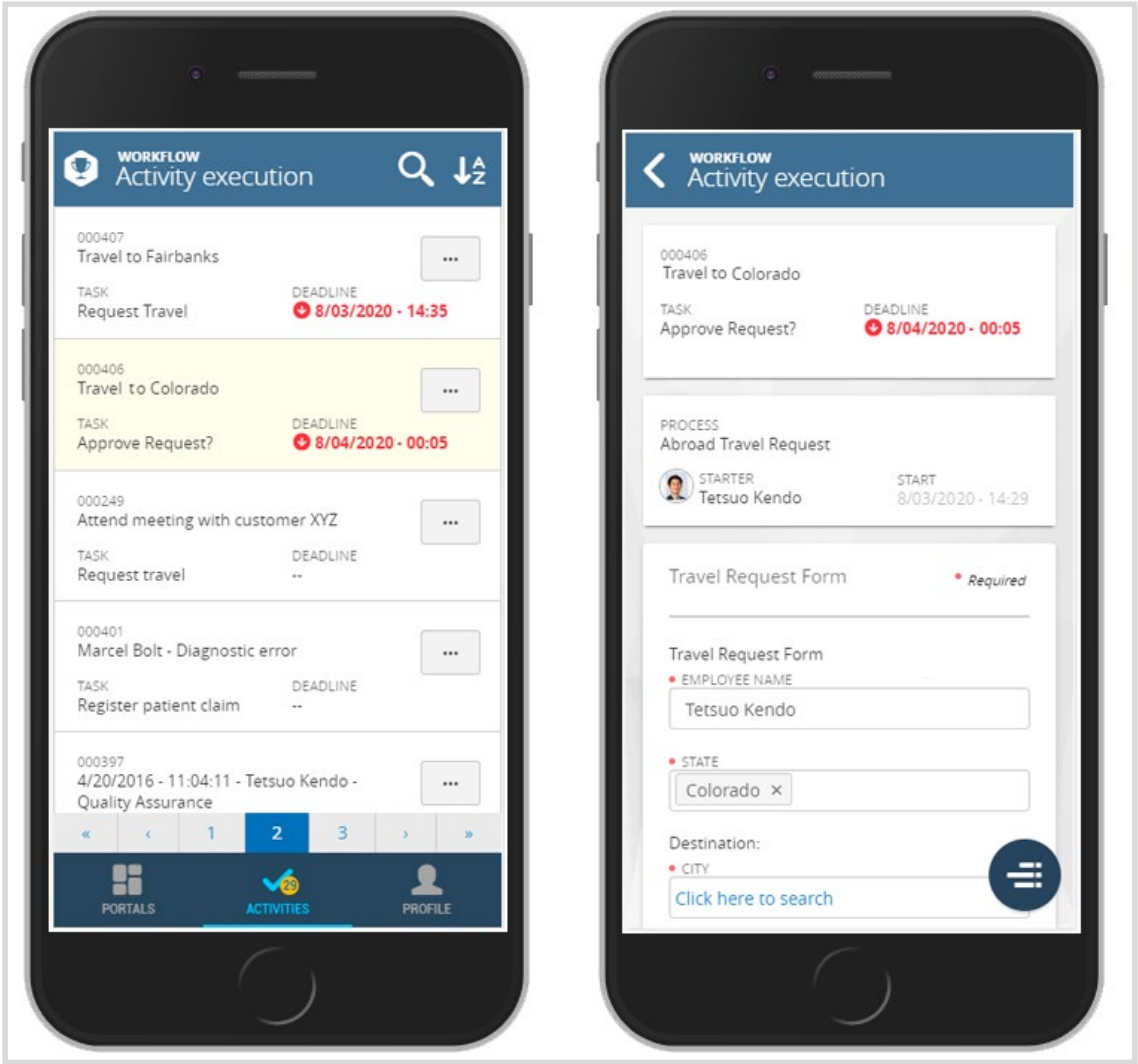
PRODUCT NAME	QUANTITY	PRICE
1	Dual Phase 1180	89.95

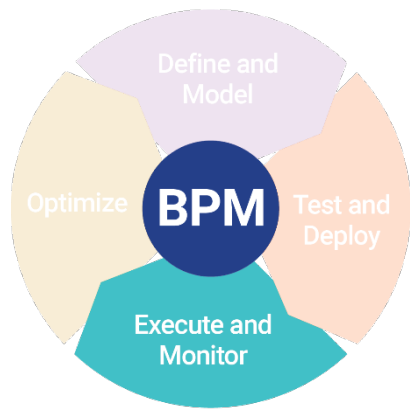
TETSUO KENDO



Execute

Execute workflows natively from mobile devices.



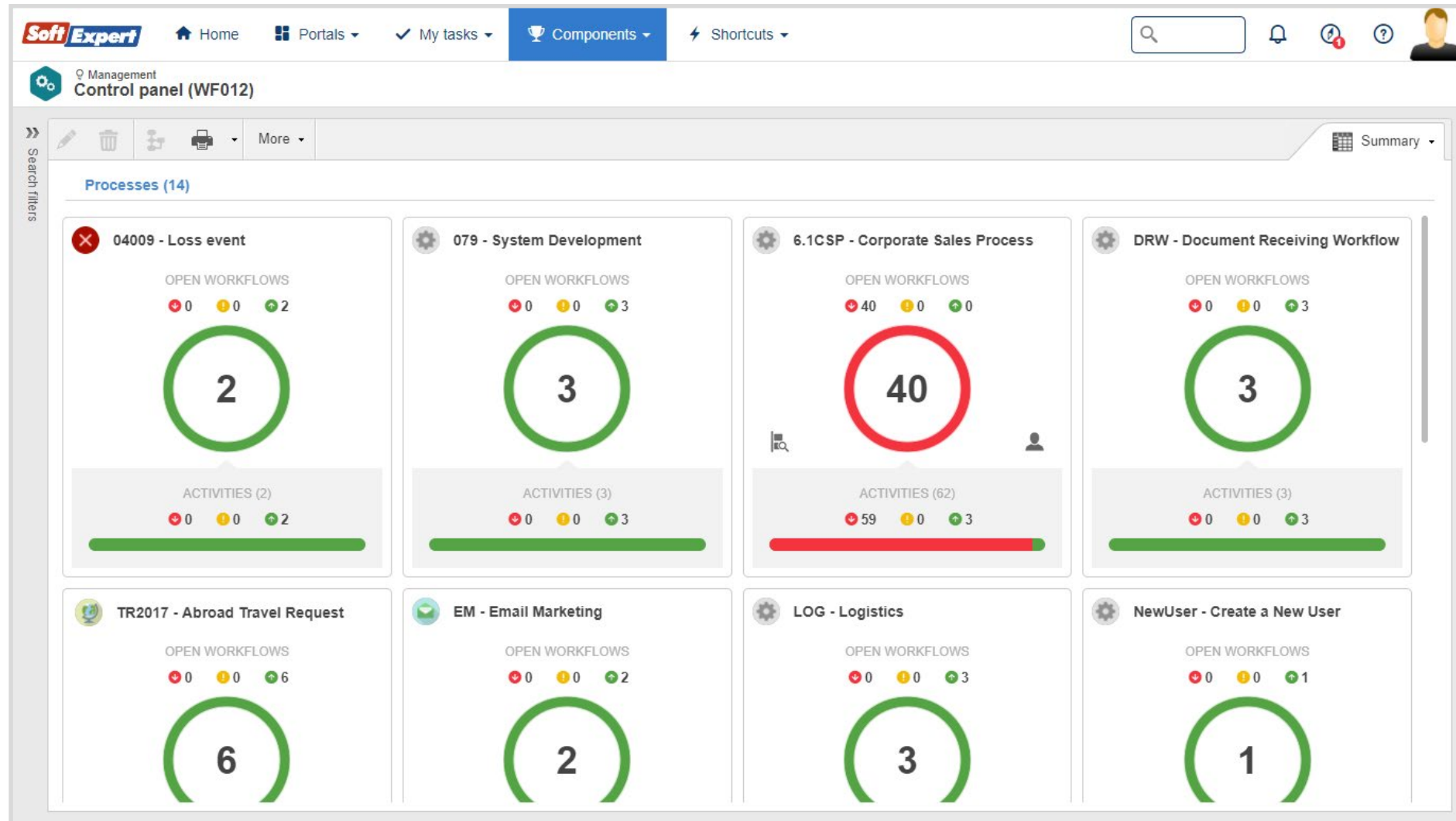


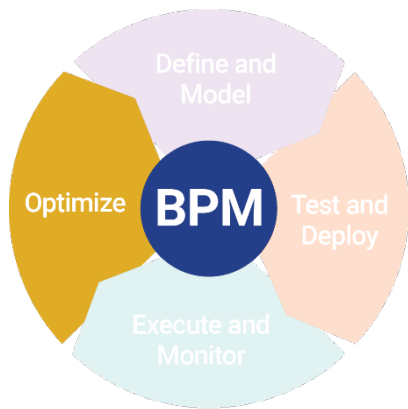
Execute

Monitor

Monitor

Track processes and collect information from real-time execution.





Analyze

Optimize

Analyze

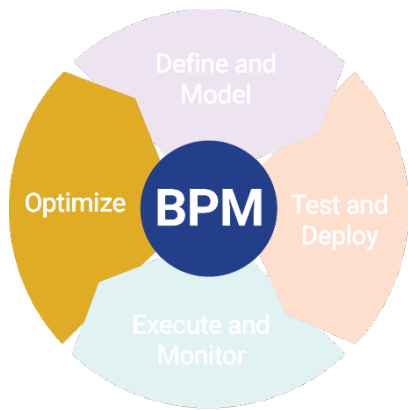
Analyze process performance with robust analytic capabilities.

New view

Record	Type	Styles	Display	Data	Tools
Save	Open	Details	Table	Conditional format	Title
				Group values	Display: All
					Cache
					Export

Fields	Columns	Values	Filters
Dimensions Deadline End Execution status ID # Month Priority Process Process status Process type Revision Start Starter Title Year	Year Process Process status [COUNT] Quantity		Drag the field here

Year	Process	Process status	Quantity
2008	Corporate Sales Process	In progress	23
2009	Purchase Request Process	In progress	21
2008	Pension Request	In progress	13
2013	ITSM - Service Request	In progress	10
2008	Asset Control	Finished	9
2009	Corporate Sales Process	In progress	9
2009	Incident Management	In progress	8
2009	Asset Control	In progress	6
2009	Incident Management	Finished	6
2009	Pension Request	In progress	5
2008	Asset Control	In progress	5
2010	Corporate Sales Process	In progress	5
2014	Product changes request	In progress	5
2015	Document Receiving Workflow(1)	In progress	5
2014	Standard Revision Process	In progress	4
2009	Incident Management	In progress	4

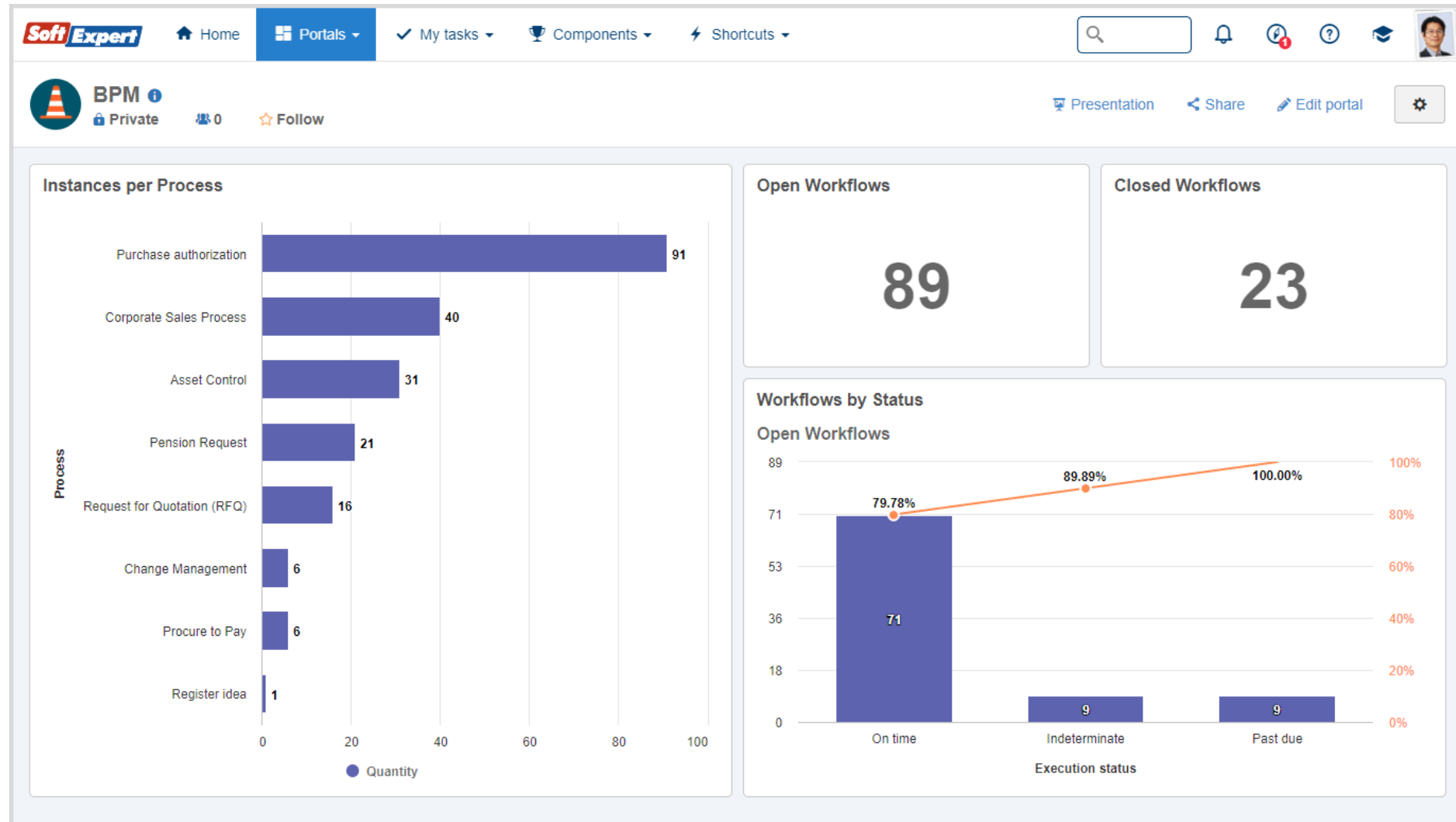


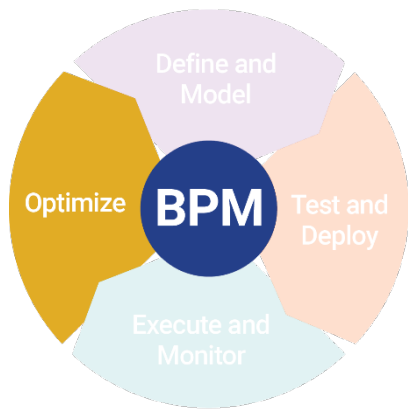
Analyze

Optimize

Analyze

Publish data analysis in rich and intuitive management portals.



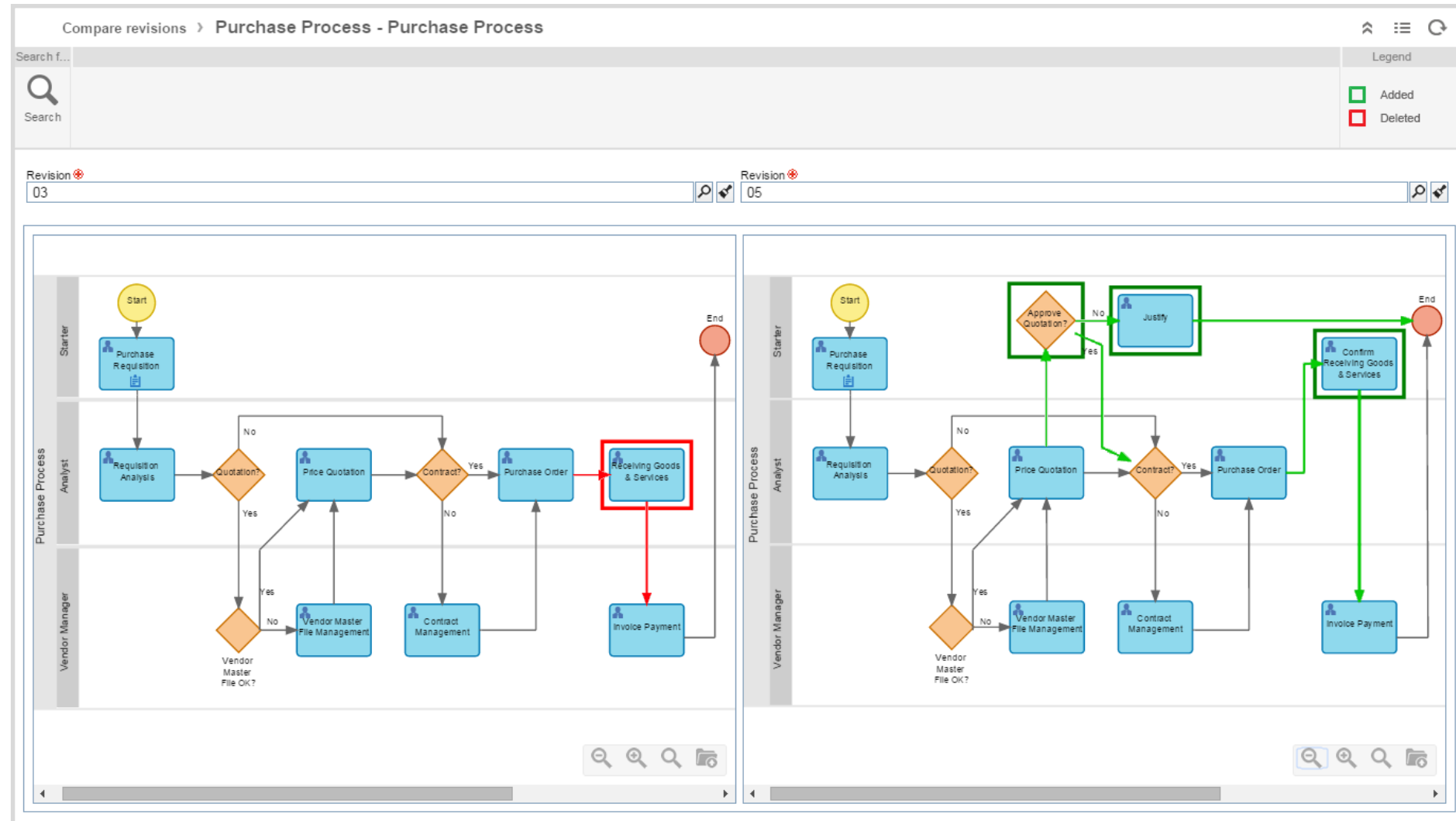


Optimize

Improve processes to achieve better business performance.

Analyze

Optimize



Company

SoftExpert is the market leader in software and services for enterprise-wide business process improvement and compliance management, providing the most comprehensive application suite to empower organizations to increase business performance at all levels and to maximize industry-mandated compliance and corporate governance programs.

Founded in 1995 and currently **with more than 2,000 customers and 300,000 users worldwide**, SoftExpert solutions are used by leading corporations in all kinds of industries, including manufacturing, automotive, life sciences, food and beverage, mining and metals, oil and gas, high-tech and IT, energy and utilities, government and public sector, financial services, transportation, logistics and healthcare.

SoftExpert, along with its extensive network of **international partners**, provides **hosting, implementation, post-sales support and validation services for all solutions to ensure that customers get the maximum value from their investments.**



**Meet our
customers**



Thinking Global Acting Local

One of the driving forces behind SoftExpert's growth is its global footprint. With its extensive partnership network throughout the world, SoftExpert develops its operations on every continent offering customers strong service with a local approach specific to their markets.



SoftExpert Excellence Suite

SoftExpert Excellence Suite is the most comprehensive solution to collaboratively solve critical business excellence challenges into an integrated multi-application environment.

SoftExpert offers an integrated suite of components that can be implemented as business demands grow and the need to incorporate new functions.

Whatever the strategy chosen, only a fully shared Business Excellence environment allows its applications fit together like puzzle pieces and work seamlessly.





Software for Performance Excellence

Take your business to the next level.

www.softexpert.com | sales@softexpert.com

These materials are subject to change without notice. These materials are provided by SoftExpert and its affiliated companies for informational purposes only, without representation or warranty of any kind, and SoftExpert shall not be liable for errors or omissions with respect to the materials. The only warranties for SoftExpert products and services are those that are set forth in the express warranty statements accompanying such products and services, if any. Nothing herein should be construed as constituting an additional warranty. Some product features and functionalities presented herein may be optional or dependent on the composition of the offer acquired.