

liteCam Android User Guide

liteCam Android User Guide

Last Updated: Feb. 2015

Copyright

liteCam Android

Guide Version 2.0

© 2015 RSUPPORT Co., Ltd. All Rights Reserved

The information contained in this manual and future improvements are subject to change without notice.

Rsupport Co., Ltd. hereafter referred to as "Rsupport", does not take any responsibility for any marketability nor compatibility apart from the usage described in the manual.

Under no circumstances will Rsupport be liable to direct, indirect, incidental nor accidental damages due to errors in the manual.

This manual is the intellectual property of Rsupport and is protected under international copyright laws. Reproducing or copying all or part of this document without the prior written consent of Rsupport is a violation of international copyright law.

Windows Vista / 7 / 8 / 10 are registered trademarks of Microsoft Corporation in the U.S. and other countries. Any additional third party registered trademarks mentioned in this manual are used for reference and descriptive purposes only and are still the intellectual property of the third party in question.

SYSTEM REQUIREMENTS	4
LITECAM ANDROID INSTALLATION GUIDE.....	5
1. LITECAM ANDROID INSTALLATION.....	5
2. LAME INSTALLATION.....	15
3. ACTIVATE USB DEBUGGING MODE.....	15
4. DOWNLOAD AND INSTALL USB DRIVERS.....	17
SETTINGS PRIOR TO RECORDING	19
1. AUDIO DEVICE	19
2. VIDEO OPTIONS.....	20
3. VIDEO FILE OPTIONS.....	22
4. SHORTCUT KEYS	24
RECORD.....	26
1. ONE-CLICK RECORDING	26
2. STOP/PAUSE RECORDING.....	26
PREVIEW.....	27
1. SELECT PREVIEW	27
2. FULL SCREEN	29
3. OPEN	29
4. OPEN FOLDER.....	29
5. TRIM	30
6. CONVERT	30
7. UPLOAD TO YOUTUBE	31
8. HIDE/UNHIDE RECORDED LIST	32
GENERAL OPTIONS.....	33
1. FRAMES PER SECOND	33
2. AUDIO FORMAT.....	35
3. VIDEO FORMAT.....	37
ADVANCE RECORDING OPTION	39
1. TITLE	39
2. CREDITS.....	41
3. LOGO	43
4. PIP.....	45
<input type="checkbox"/> <i>Solution for PIP interference while recording.....</i>	<i>47</i>
CONVERTING AND EXTRACTION.....	49
1. CONVERT VIDEO FILES.....	49
2. EXTRACT AUDIO FILES	51
OTHER.....	53
HELP.....	55

System Requirements

	Minimum	Recommended
OS	Windows Vista	Windows 7, 8, 10
CPU	1.5GHz single-core CPU	2GHz dual-core CPU or better.
Graphics Card	128MB Video Memory Graphic Card supporting DirectX9 and WDDM driver Video Memory of 512MB or more.	
RAM	1GB RAM or more is recommended	
Sound Card	A sound card that supports full-duplexing is required.	

*Microsoft Internet Explorer 8.0 / Microsoft Windows Media Player 11 or later is recommended. You may not be able to record computer sounds if you are using a sound card that does not support full-duplexing, upgrading the driver is recommended in order to record computer sounds. If your current sound card does not support full-duplexing, upgrading the driver will not help because it may be hardware related. Depending on which movie or game you intend to record, you may need to upgrade your graphic card, sound card, CPU or RAM, or install the latest version of Direct X.

liteCam Android Installation Guide

1. liteCam Android installation.

Download and Run

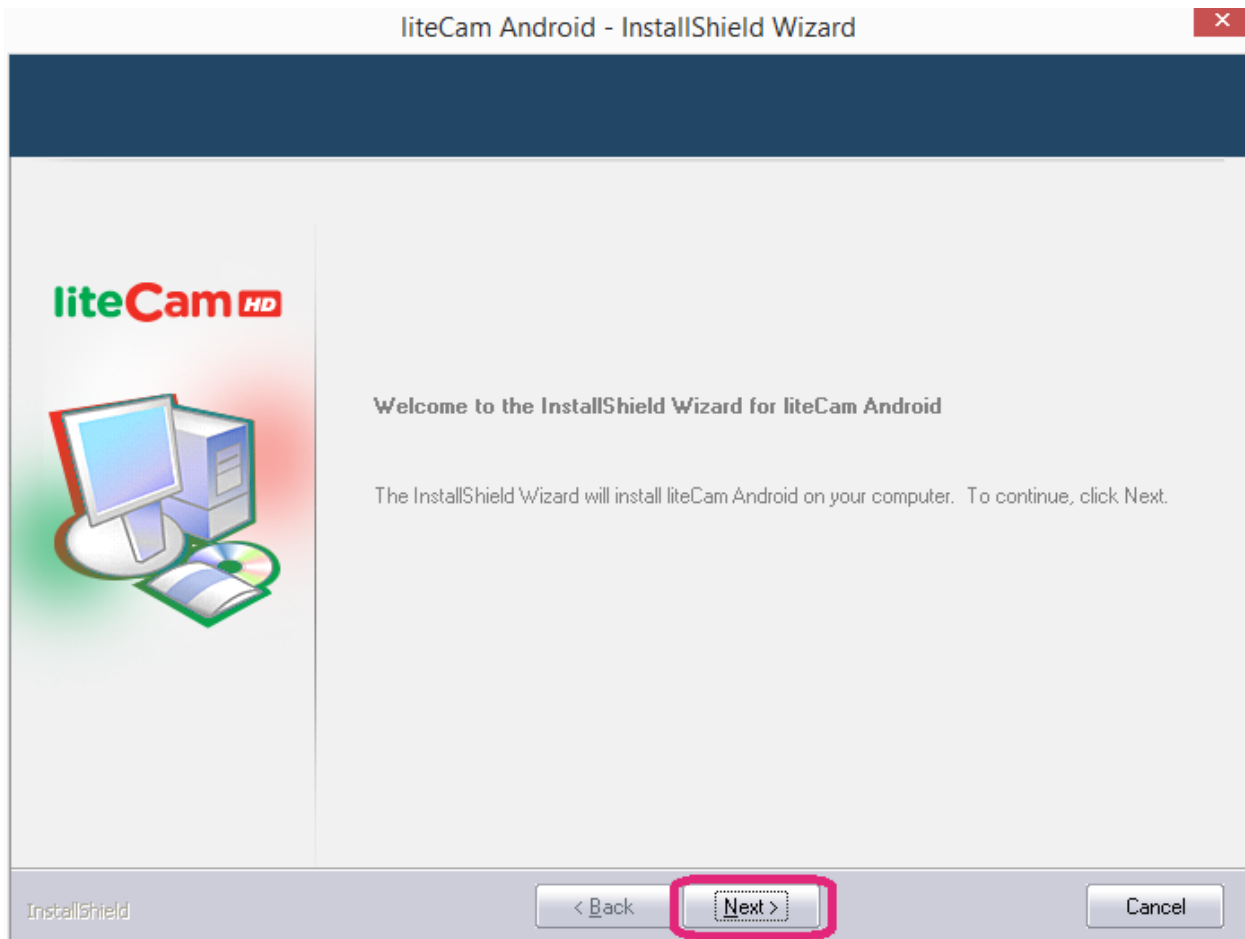
To download, go to www.litecam.net/en/ and download liteCam Android.

Next, run the downloaded installation file.

Setup Window

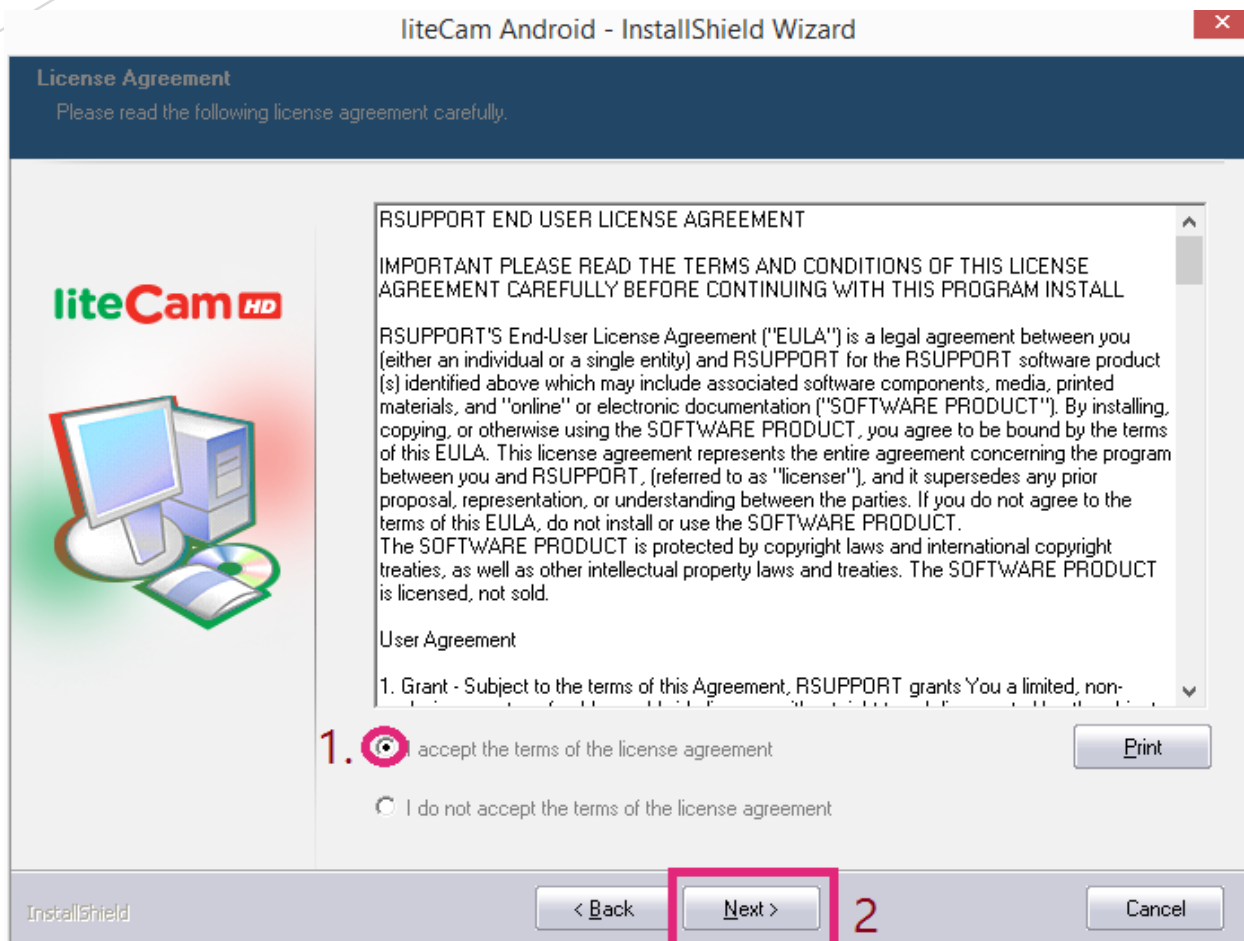
When you run the installation file, the liteCam Android setup window will appear as shown below.

Click "Next" to continue.



License Agreement

Agree to the liteCam Android Terms and Condition to continue with the installation process. To accept the liteCam terms, click "I accept the terms of the license agreement" and click "Next" to continue.



License Information

Enter your license code and information.

There are two types of liteCam Android, a free and full version.


Free version: if you have a free version of liteCam Android, type "Free" in the space for license code, as shown below.

Then click "Next" to Continue.

liteCam Android - InstallShield Wizard ✕

Customer Information
 Please enter your information.

Please enter user name, e-mail address and license code. The user name and e-mail address are used for program authorization. Incorrect information will cause authorization to be denied and you cannot access the program.

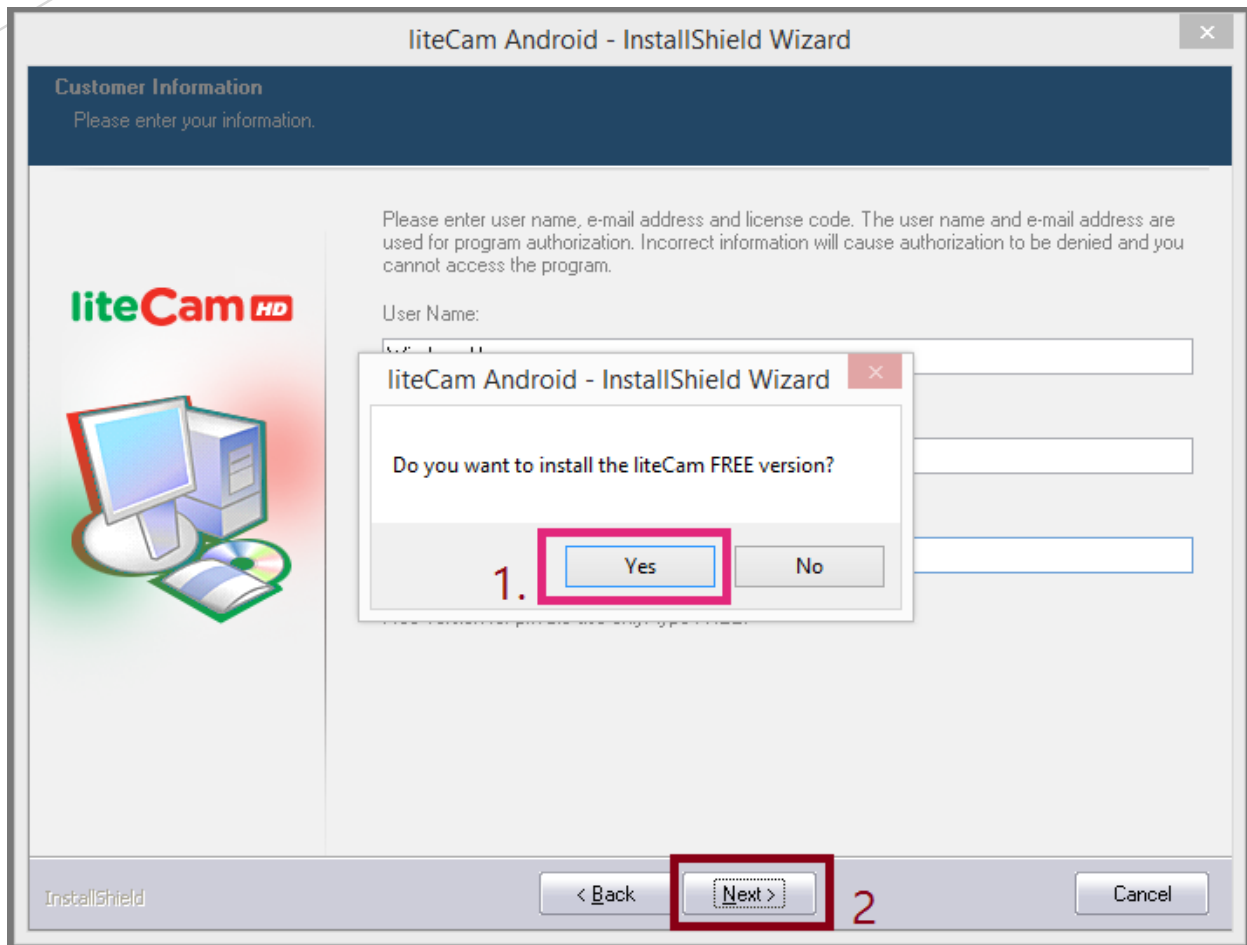


1.
2.
3.

Paid version: enter your license code.
 Free version for private use only: type FREE.

InstallShield < Back Next > Cancel

You will be prompted with “Do you want to install the liteCam FREE version” as shown below, click “Yes” in order to continue.



If you have a license code or you have purchased the full version of liteCam Android, click “No” to return back to the previous window.


Full version: when you purchase liteCam Android, you will be provided with your license code in the confirmation email you receive. Enter your license code in the space for license code.

Click “Next” to continue

liteCam Android - InstallShield Wizard ✕

Customer Information
 Please enter your information.

Please enter user name, e-mail address and license code. The user name and e-mail address are used for program authorization. Incorrect information will cause authorization to be denied and you cannot access the program.



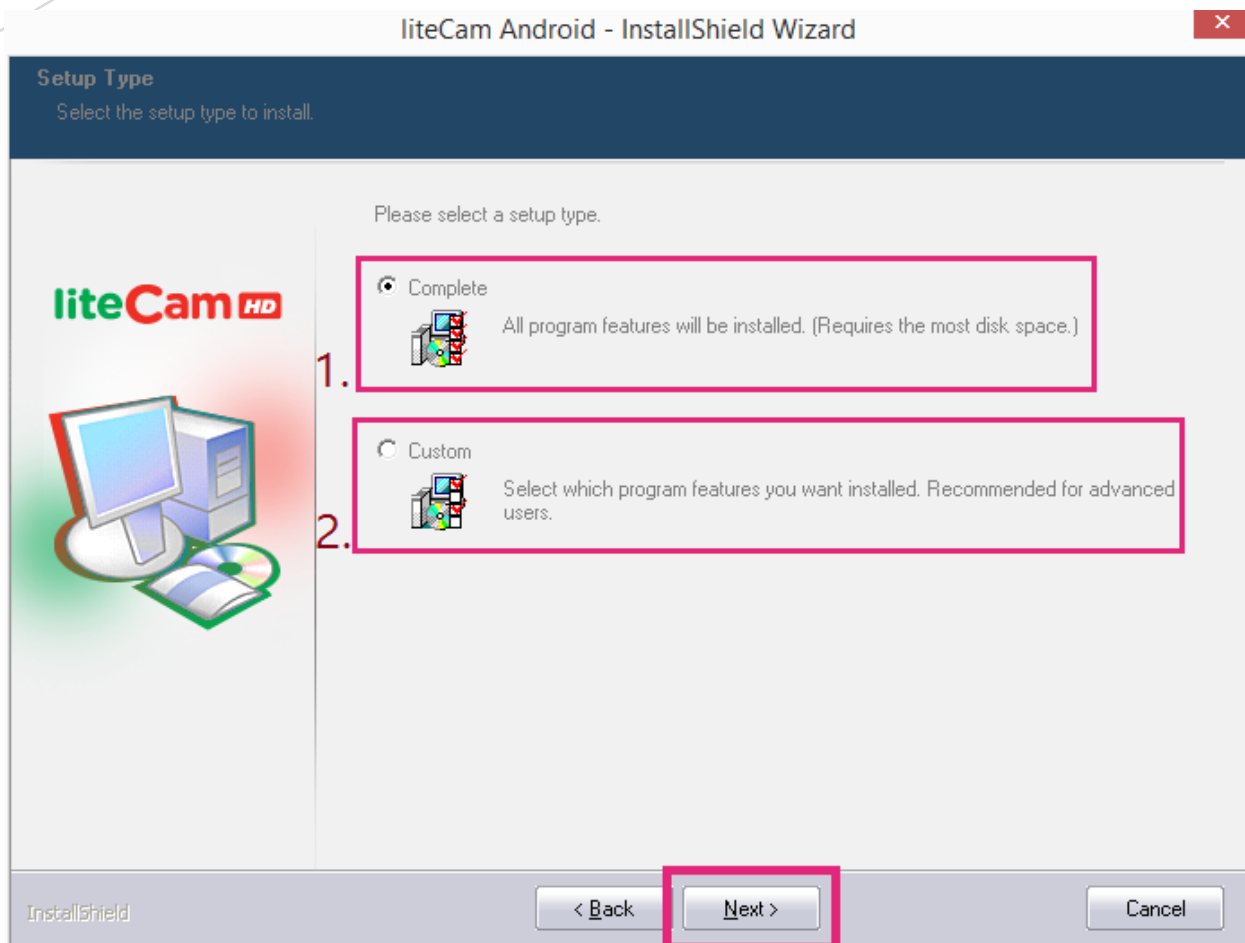
1.
2.
3.
Paid version: enter your license code.
 Free version for private use only: type FREE.

InstallShield < Back Next > Cancel

Choose Installation location

You can choose the location of where you want to install liteCam Android, or you can let liteCam Android install to its default location.

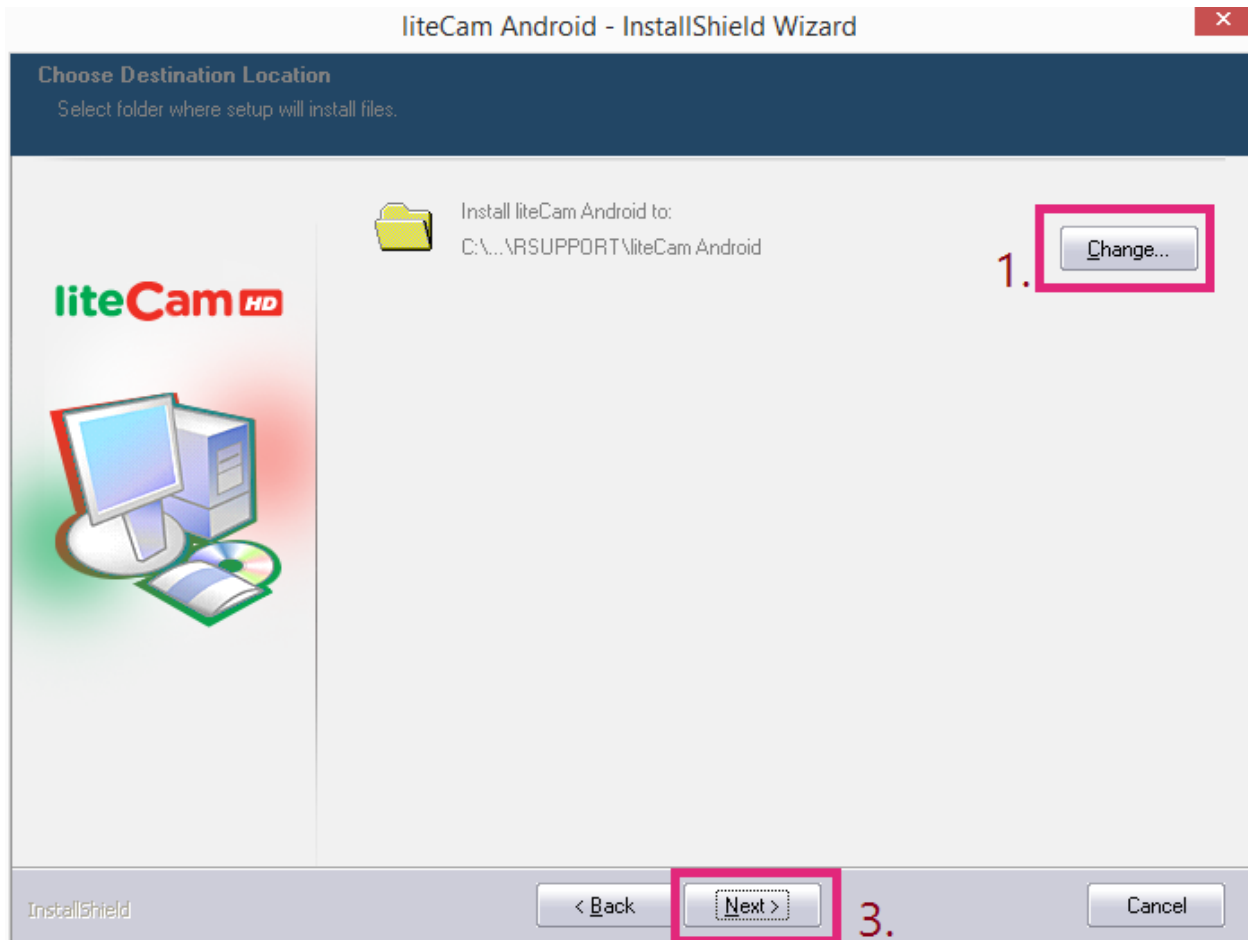
Choose "Complete" to install liteCam Android in its default location, and click next.



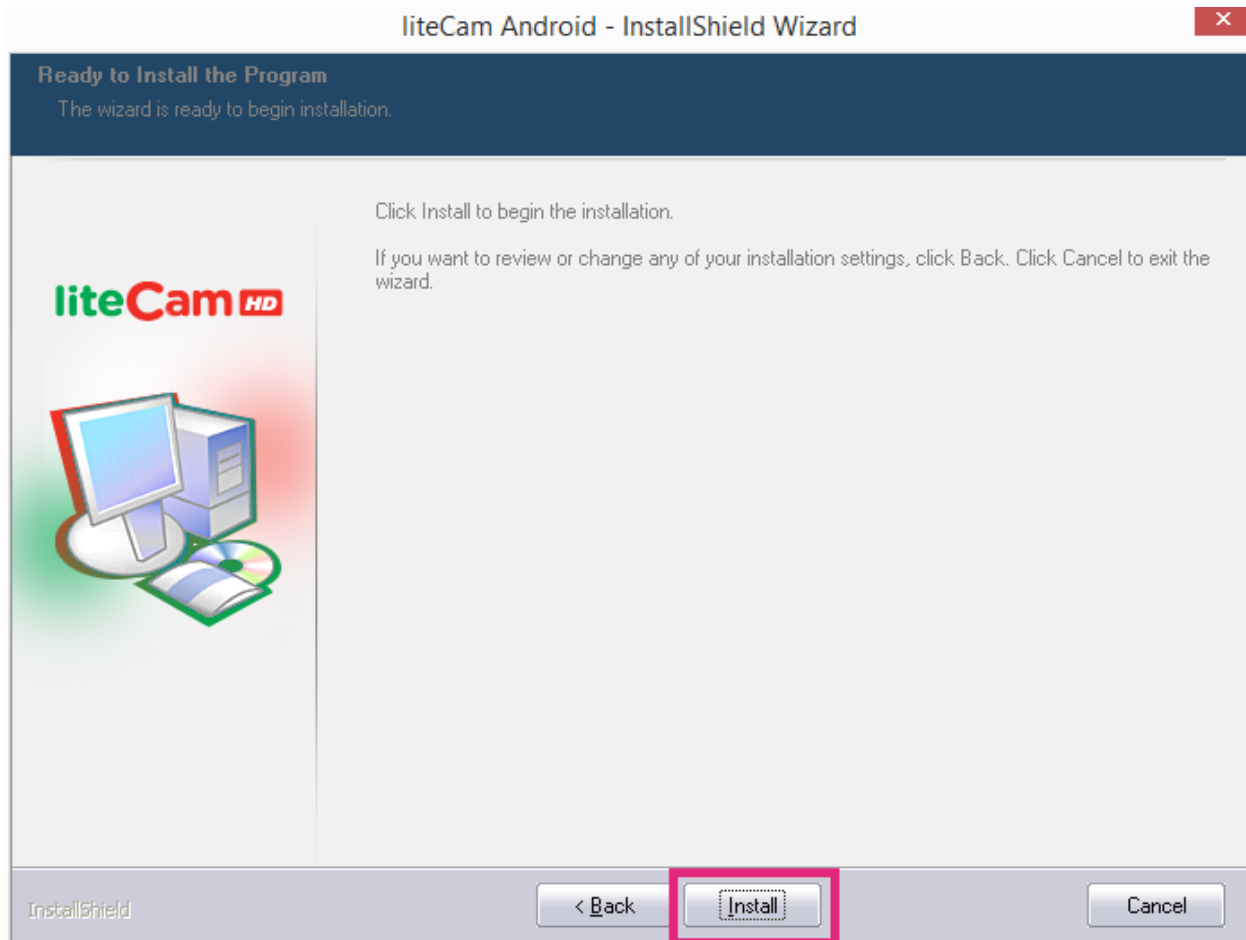
If you choose “Custom,” you can manually select the installation location.

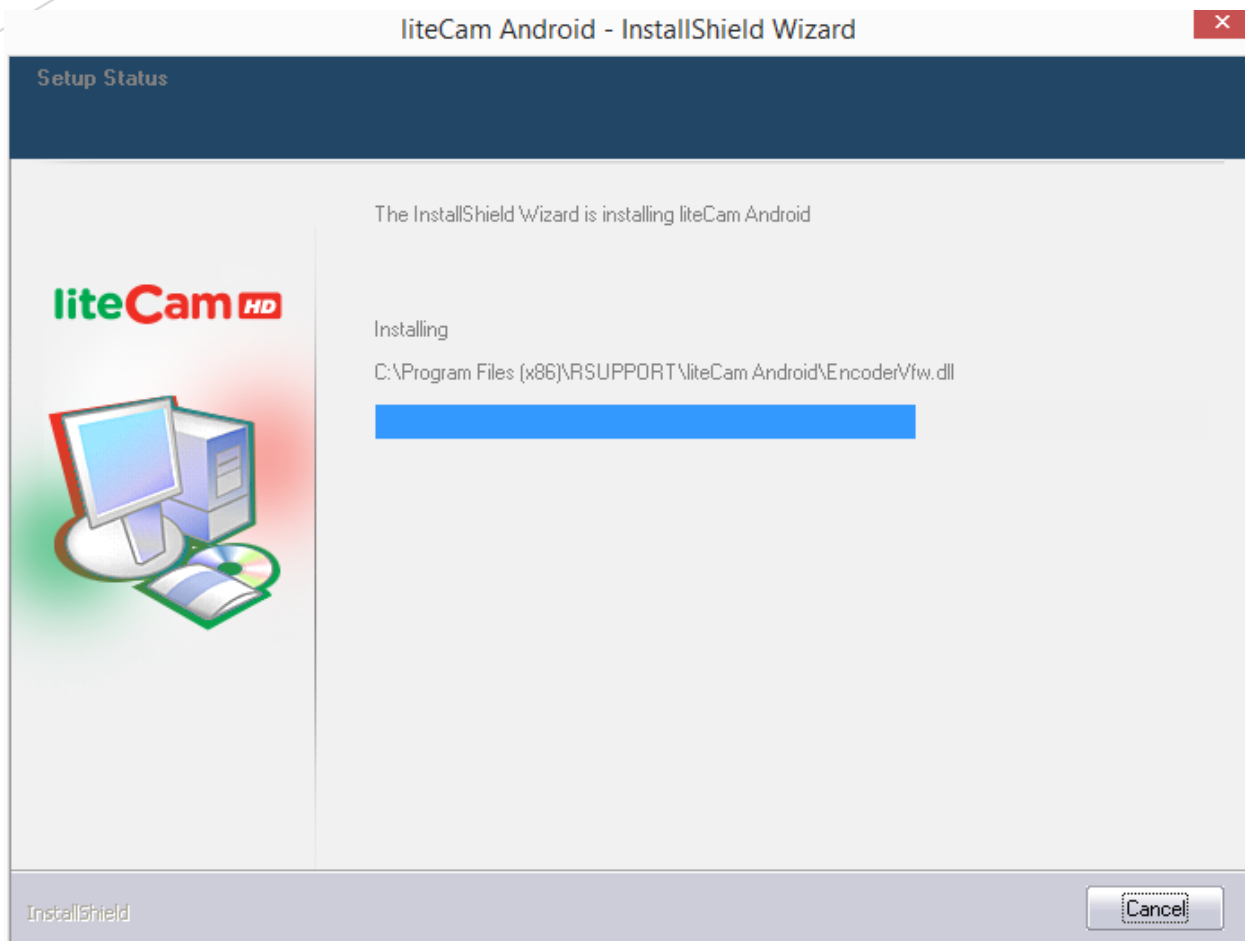
1. Click “Change” to select the installation folder.
2. Select the installation folder.
3. Click “Next” to continue.

Click "Next" to continue.



Click "Install" to continue.

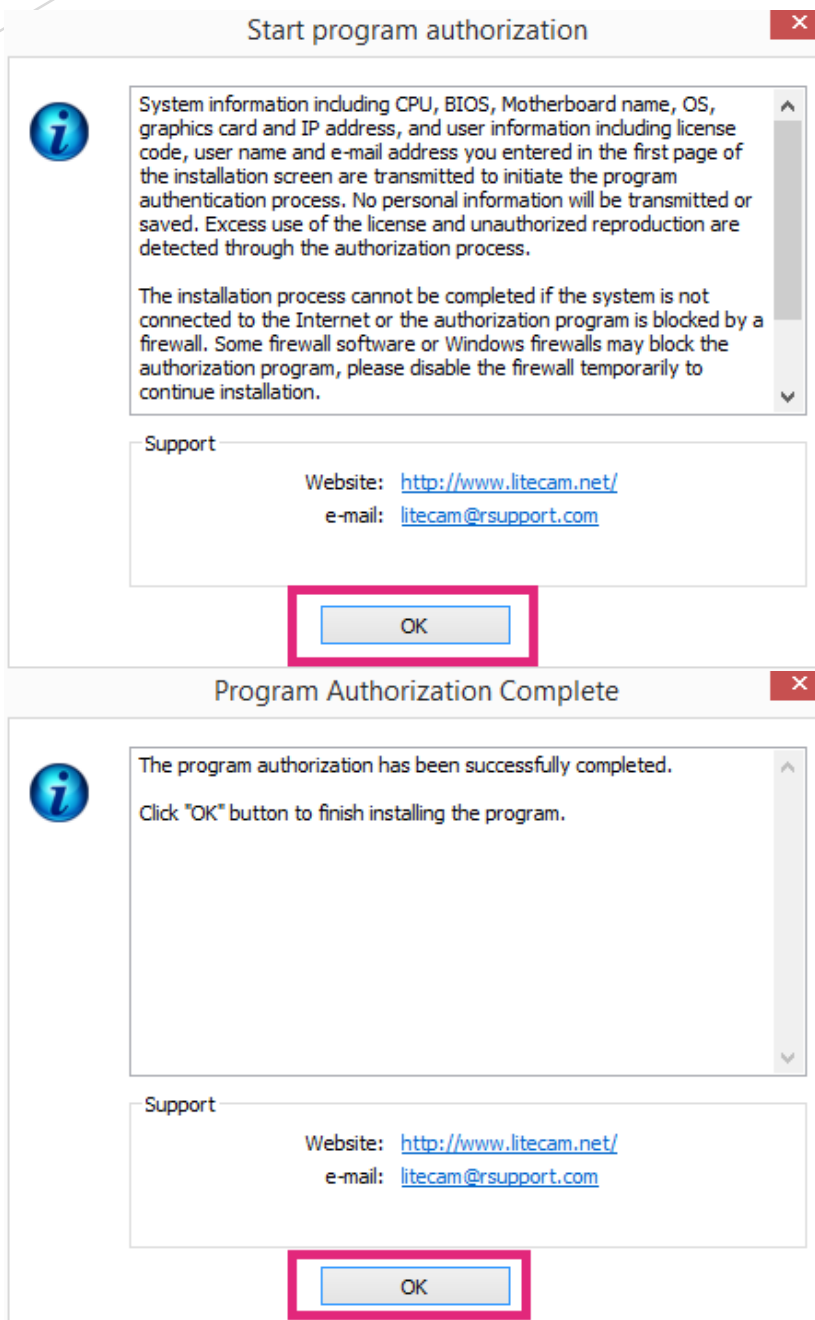




Authentication

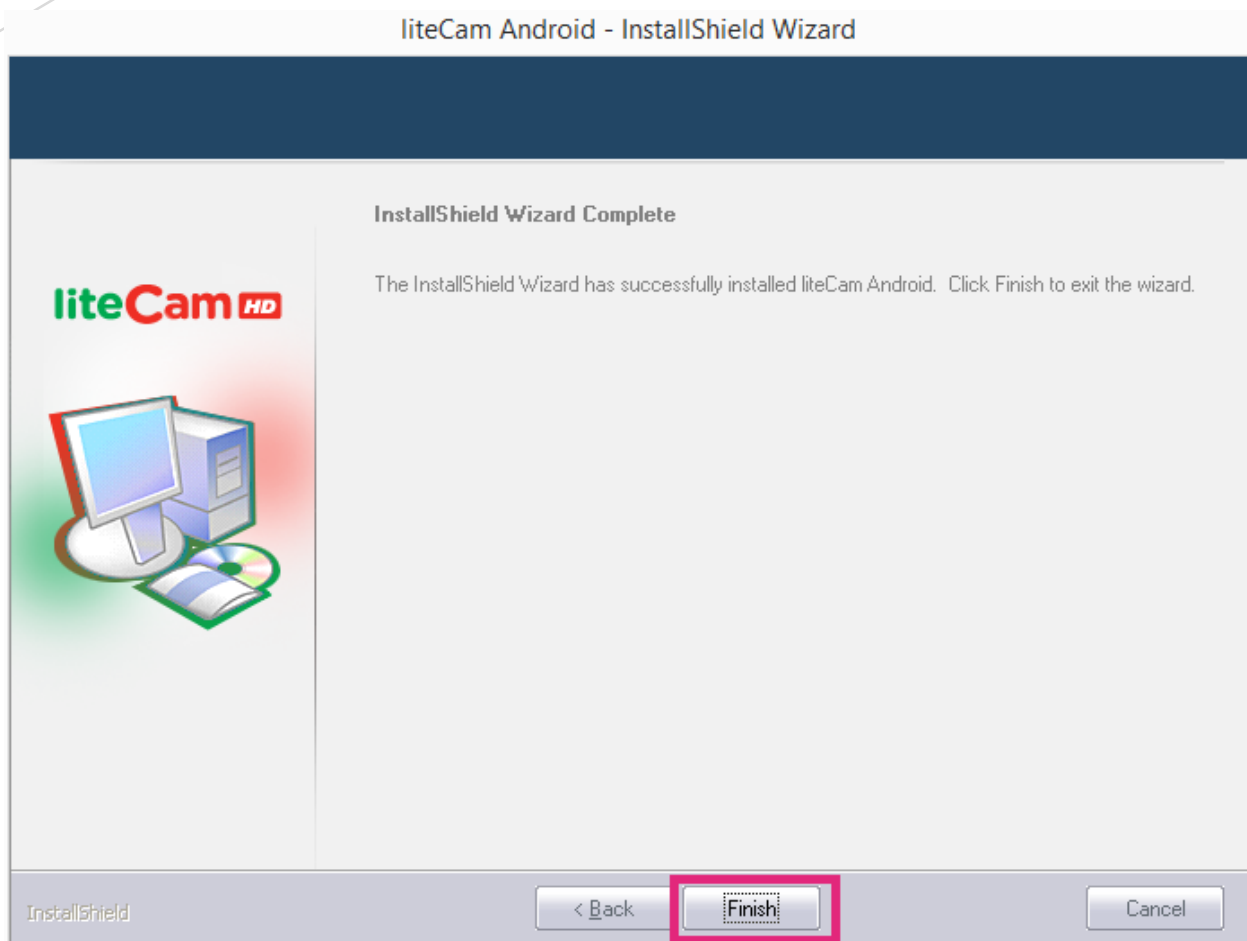
liteCam Android needs to be authorized with our authentication server, therefore you must have internet connection while installing liteCam Android.

NOTE: If you get an error during the authentication process, check your internet connection.



Installation complete

If you see the "InstallShield Wizard Complete" window, click "Finish" to start using liteCam Android.



NOTE: During installation, RSUPPORT Screen Capture Codec (RSCC) and RSUPPORT MPEG-4 Codec" will be installed automatically.

2. LAME Installation

Lame is a high quality MPEG Audio layer III (3) encoder. To have an MP3 option, or to save or convert audio to MP3 format, Lame encoder must be installed in your computer. During installation you will see a dialog box which will prompt you to install the MP3 encoder (Lame), click "OK" to be directed to the website where you can download the Lame file.

Download the zip file and extract it. Copy and paste the "lame_enc.dll file" to the folder below (in case you didn't change the liteCam Android directory) C:\Program Files\Steam\SteamApps\common\liteCam Android Folder.

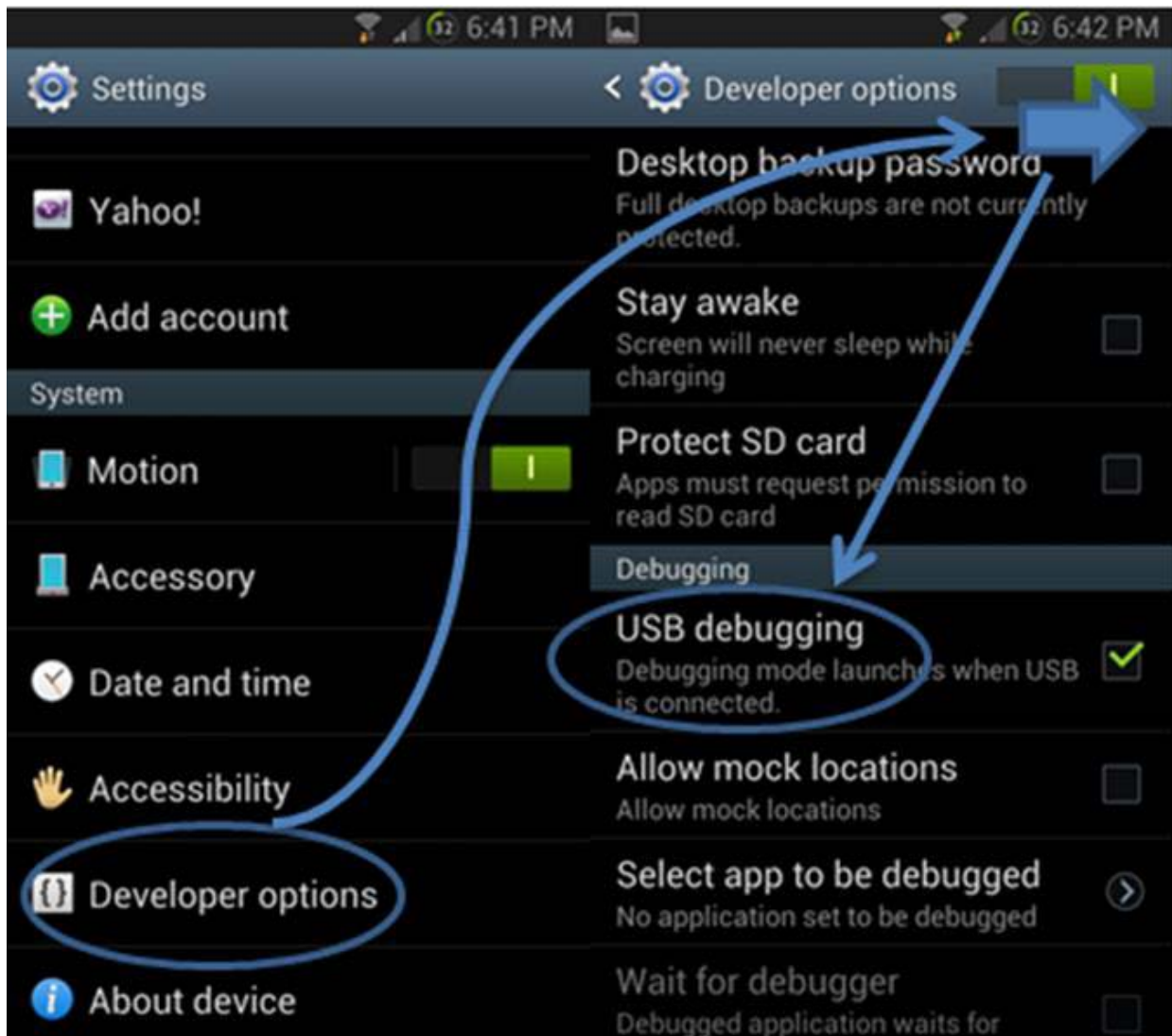
3. Activate USB Debugging Mode

Enabling USB debugging mode is incredibly easy, however USB debugging is different depending on your Android device and OS version

Note: liteCam Android only supports Android version 4.1 and above.

Android 4.1

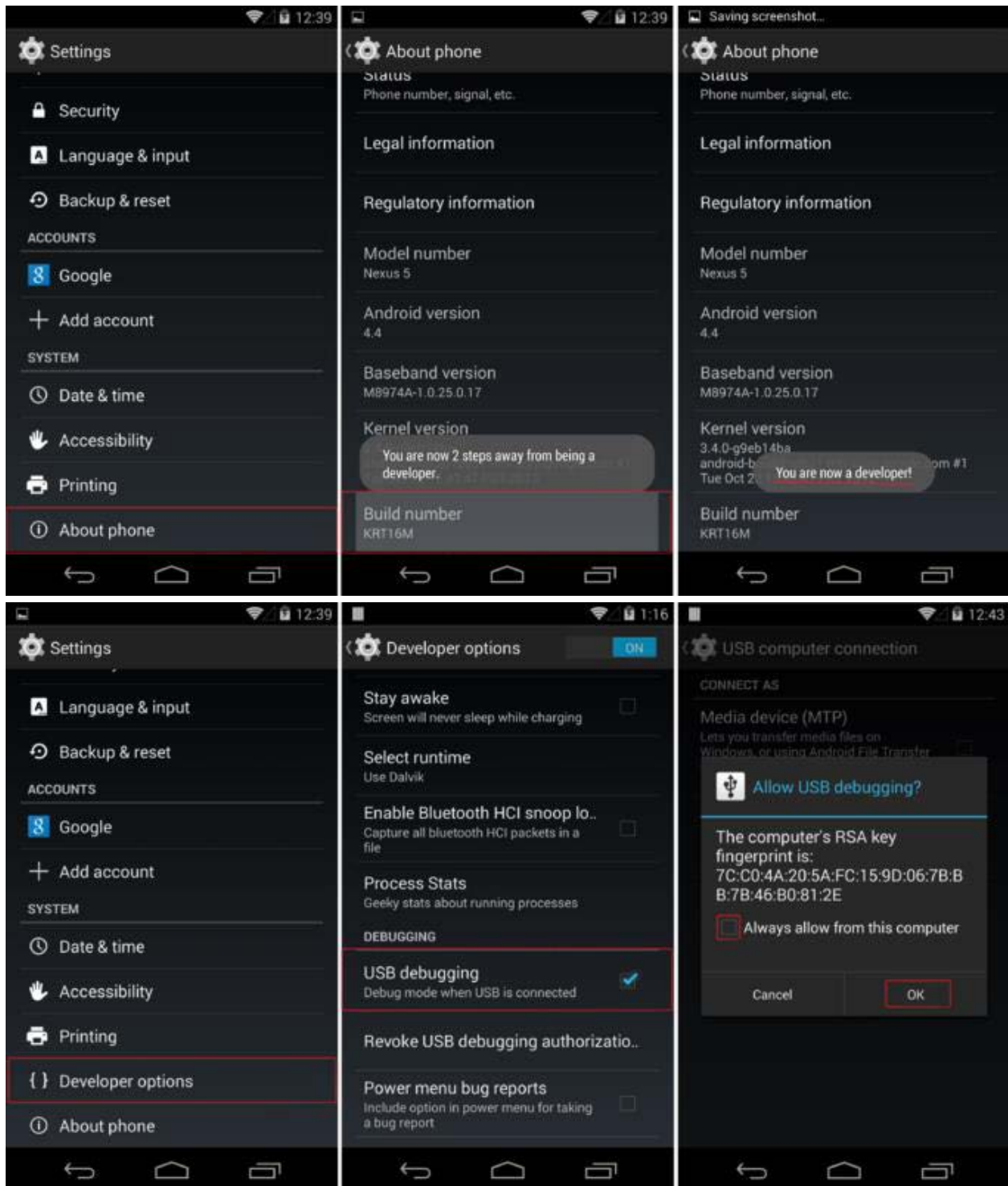
- Go to Settings
- Go to Developer Options
- Slide the Developer Options Switch to turn on Developer Options
- Place a Check Mark on the box beside USB Debugging / Android Debugging



Android 4.2 and Above

- Go to Settings
- Tap About Phone
- Scroll towards the bottom and tap "Build number" between 5 and 7 times, depending on your device. You will get a short pop-up in the lower area of your display saying that you are now a developer.
- Go back and now access the "Developer options" menu

* Check 'USB debugging' and click OK on the prompt.



4. Download and Install USB Drivers.

1. If your Android Device USB driver is installed on your PC, then you can plug in your

Android device to your PC through a USB cable. If you do not have a USB Driver installed on your PC, you will need to install it.

2. Drivers for all others devices are provided by the device manufactures.

- Acer: <http://www.acer.com/worldwide/support/mobile.html>
- ALGATEL ONE TOUCH: <http://www.alcatelonetouch.com/global-en/support/faq/usbdriver.html>
- Asus: <http://support.asus.com/download/>
- Dell: <http://support.dell.com/support/downloads/index.aspx?c=us&cs=19&l=en&s=dhs&~ck=anavml>
- Foxconn: <http://drivers.cmcs.com.tw/>
- Fujitsu: <http://www.fmworld.net/product/phone/sp/android/develop/>
- Garmin Asus: https://www.garminasus.com/en_US/support/pcsync/
- Google: <http://developer.android.com/sdk/win-usb.html#download>
- Hisense: <http://app.hismarttv.com/dss/resourcecontent.do?method=viewResourceDetail&resourceId=16&type=5>
- HTC: <http://www.htc.com>
- Huawei: <http://www.huaweidevice.com/worldwide/downloadCenter.do?method=index>
- Intel: <http://www.intel.com/software/android>
- KT Tech: <http://www.kttech.co.kr/cscenter/download05.asp>
- Kyocera: http://www.kyocera-wireless.com/support/phone_drivers.htm
- Lenovo: <http://developer.lenovomm.com/developer/download.jsp>
- LG: <http://www.lg.com/us/mobile-phones/mobile-support/mobile-lg-mobile-phone-support.jsp>
- Motorola: http://developer.motorola.com/docstools/USB_Drivers/
- MTK: http://online.mediatek.com/Public%20Documents/MTK_Android_USB_Driver.zip
- Oppo: http://www.oppo.com/index.php?q=software/view&sw_id=631
- Pantech: <http://www.isky.co.kr/cs/software/software.sky?fromUrl=index>
- Pegatron: http://www.pegatroncorp.com/download/New_Duke_PC_Driver_0705
- Samsung: <http://www.samsung.com/us/support/downloads>
- Sharp: <http://k-tai.sharp.co.jp/support/>
- SK Telesys: <http://www.sk-w.com/service/wDownload/wDownload.jsp>
- Sony Mobile: <http://developer.sonymobile.com/downloads/drivers/>
- Teleepoch: <http://www.teleepoch.com/android.html>
- Toshiba: <http://support.toshiba.com/sscontent?docId=4001814>
- Yulong Coolpad: <http://www.yulong.com/product/product/product/downloadList.html#downListUL>
- Xiaomi: <http://www.xiaomi.com/c/driver/index.html>
- ZTE: <http://support.zte.com.cn/support/news/NewsDetail.aspx?newsId=1000442>

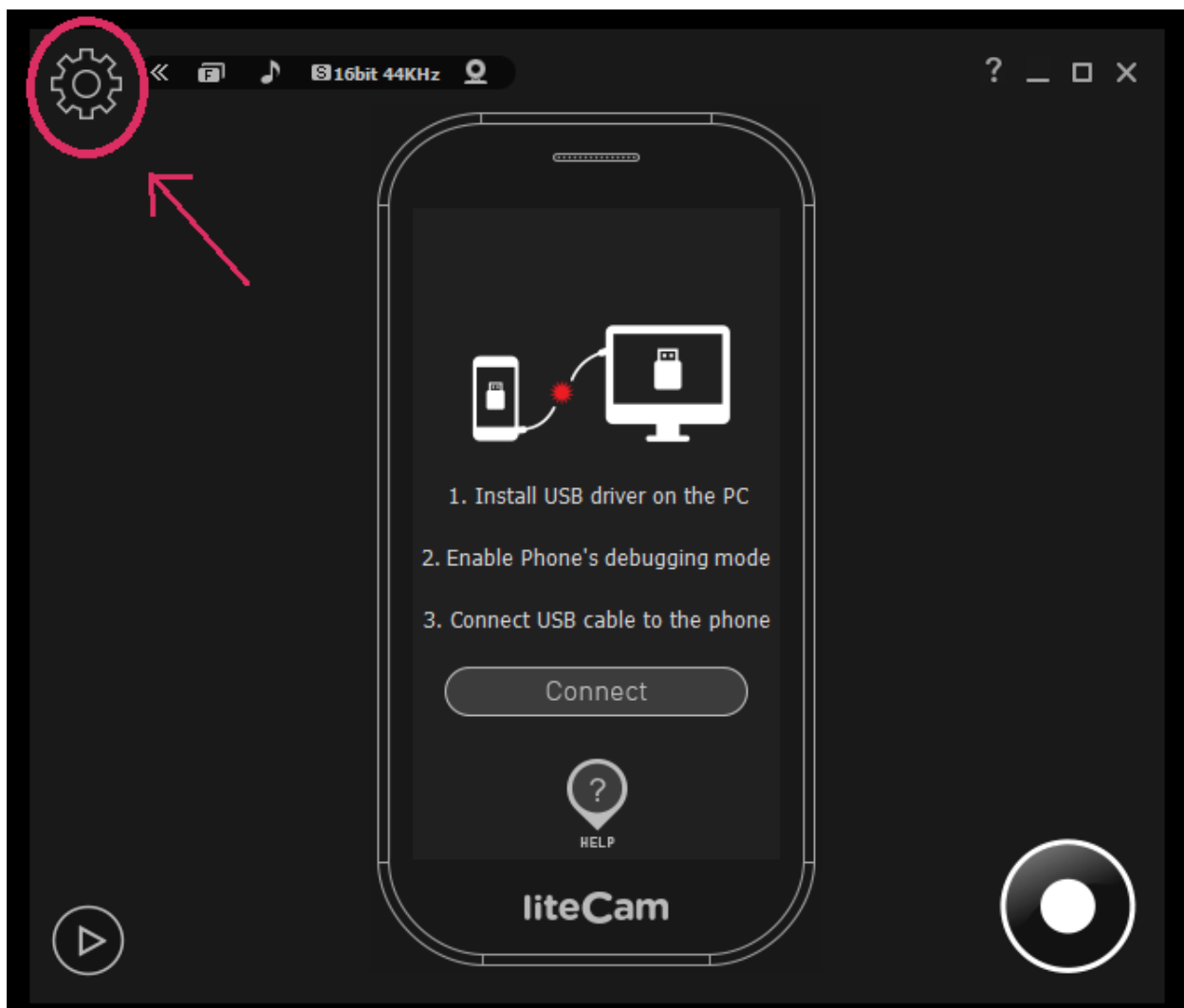
Settings Prior to Recording

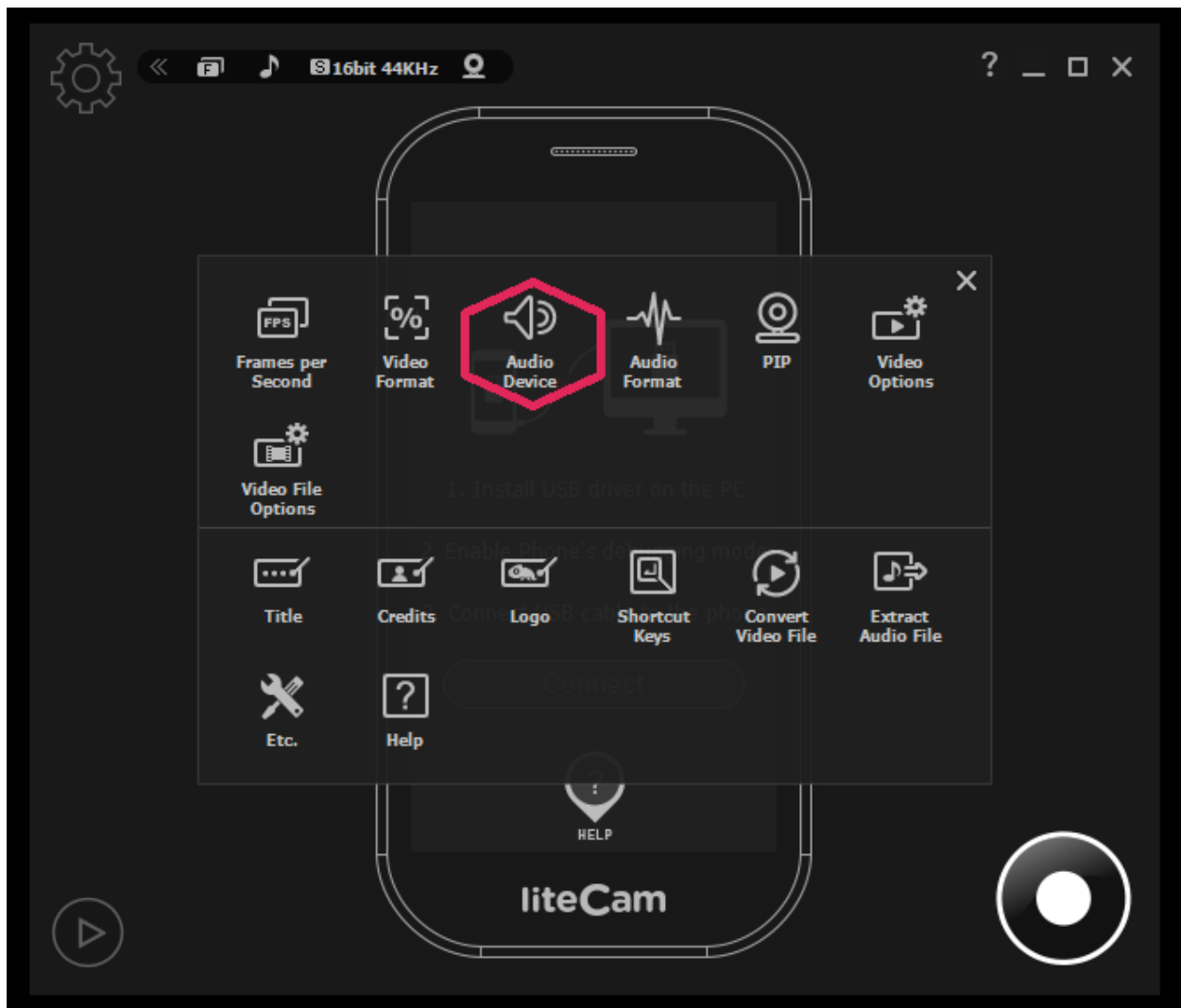
Before recording your Android screen, some options need to be set. Those options include the following;

1. Audio Device

When recording your Android screen, choose what audio device to record audio/sound from. Record audio/sound from your computer or microphone, or both computer and microphone sound simultaneously.

Start liteCam > Options > Audio Devices





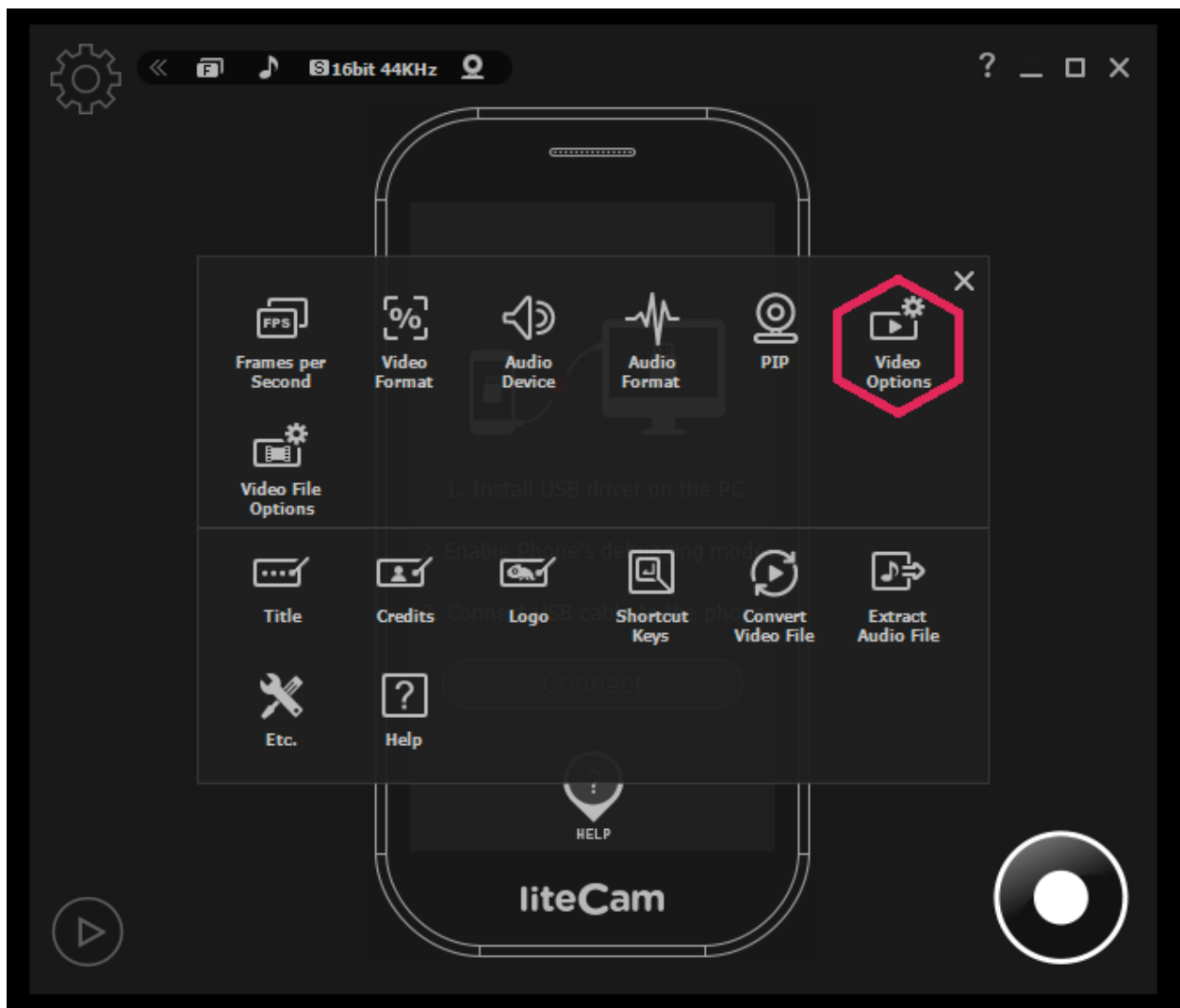
Finally, select a device you want to record sound/audio from.

1. Toggle ON
2. Choose either computer or microphone sound.
3. For dual recording, select computer sound in 2, and check microphone input.

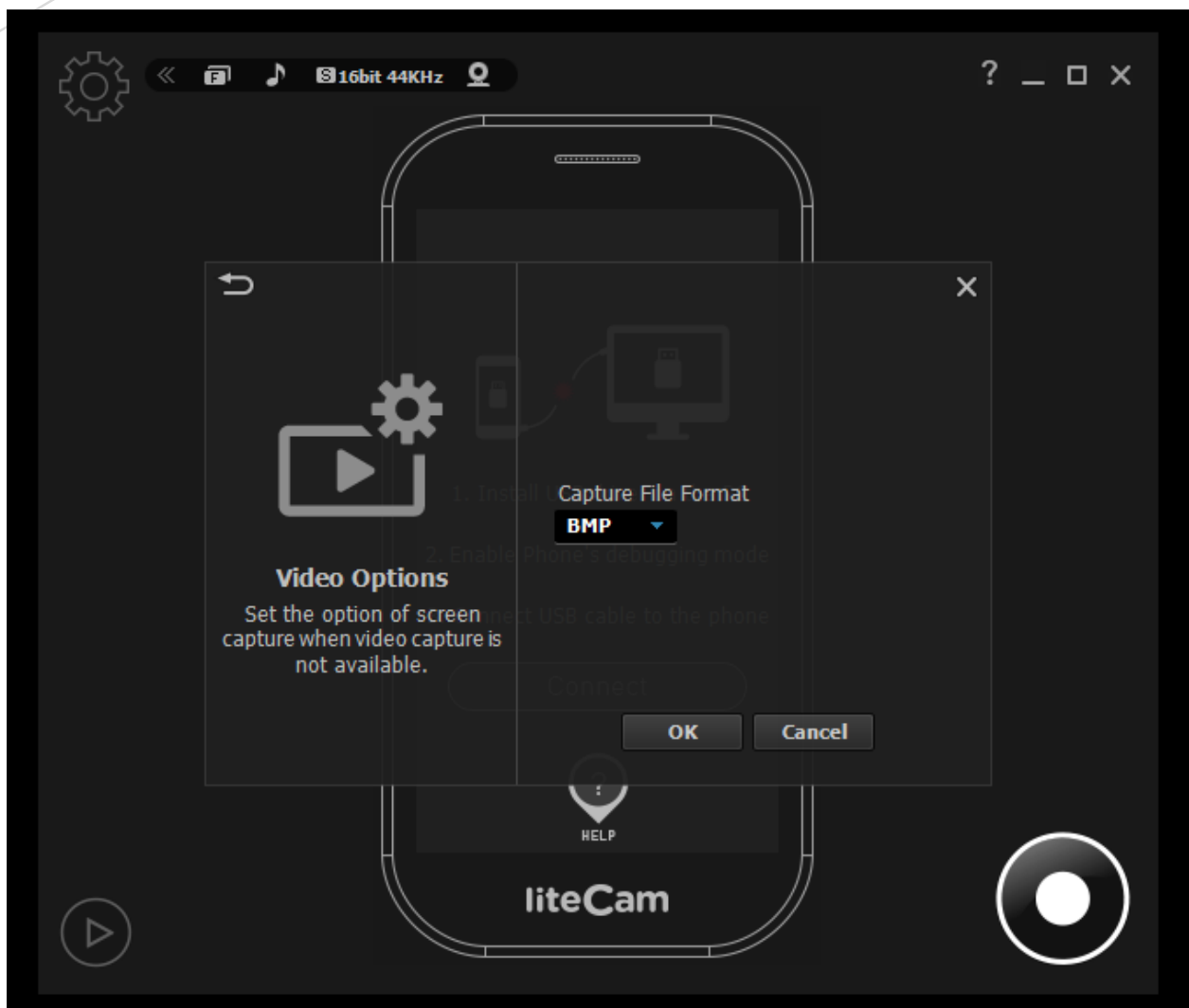
2. Video Options

Choose the video options you wish to use when recording. To select which format to save the screen shots

Start liteCam> Option> Video Format



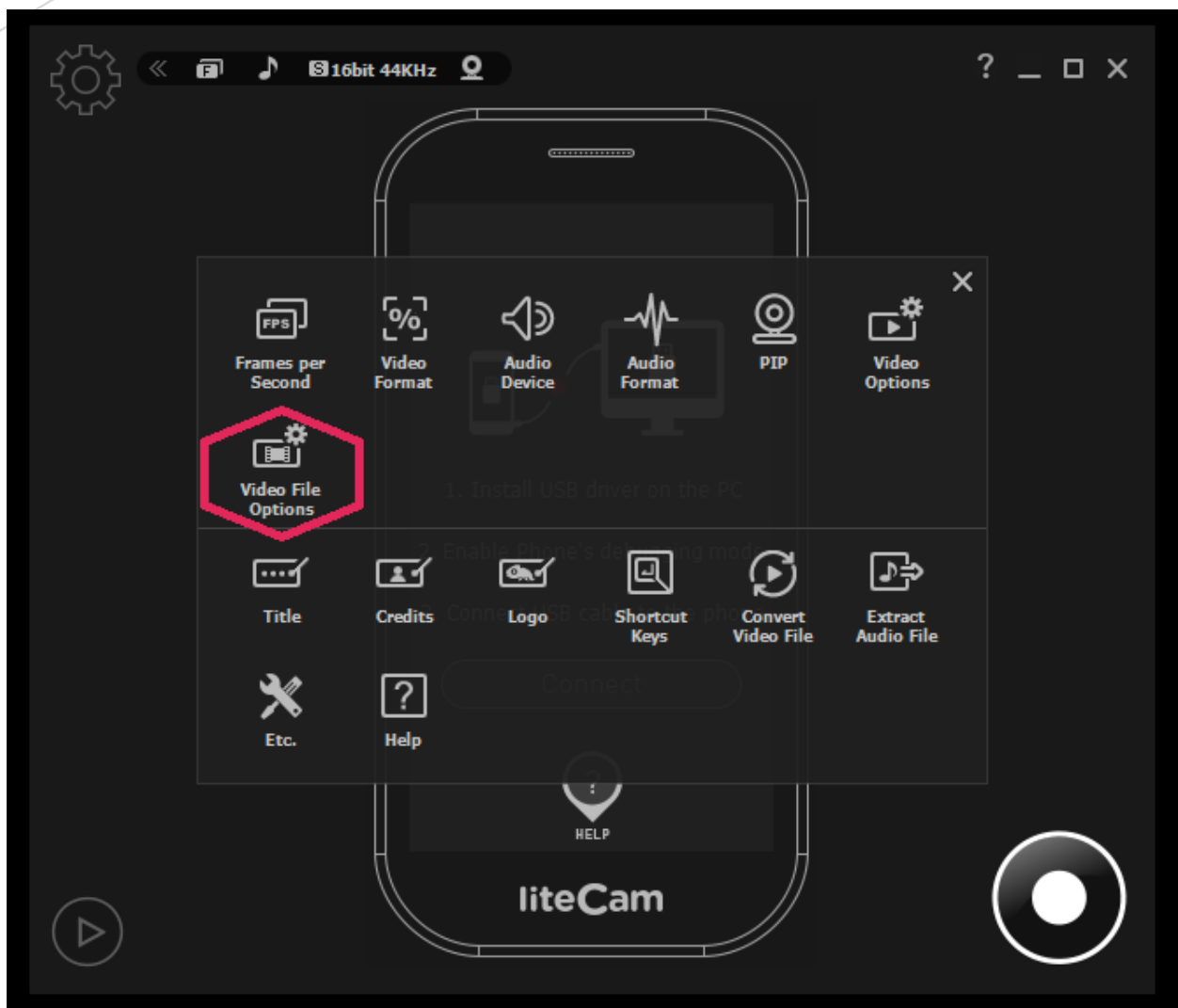
Select the file format to save the screenshot in.



3. Video File Options

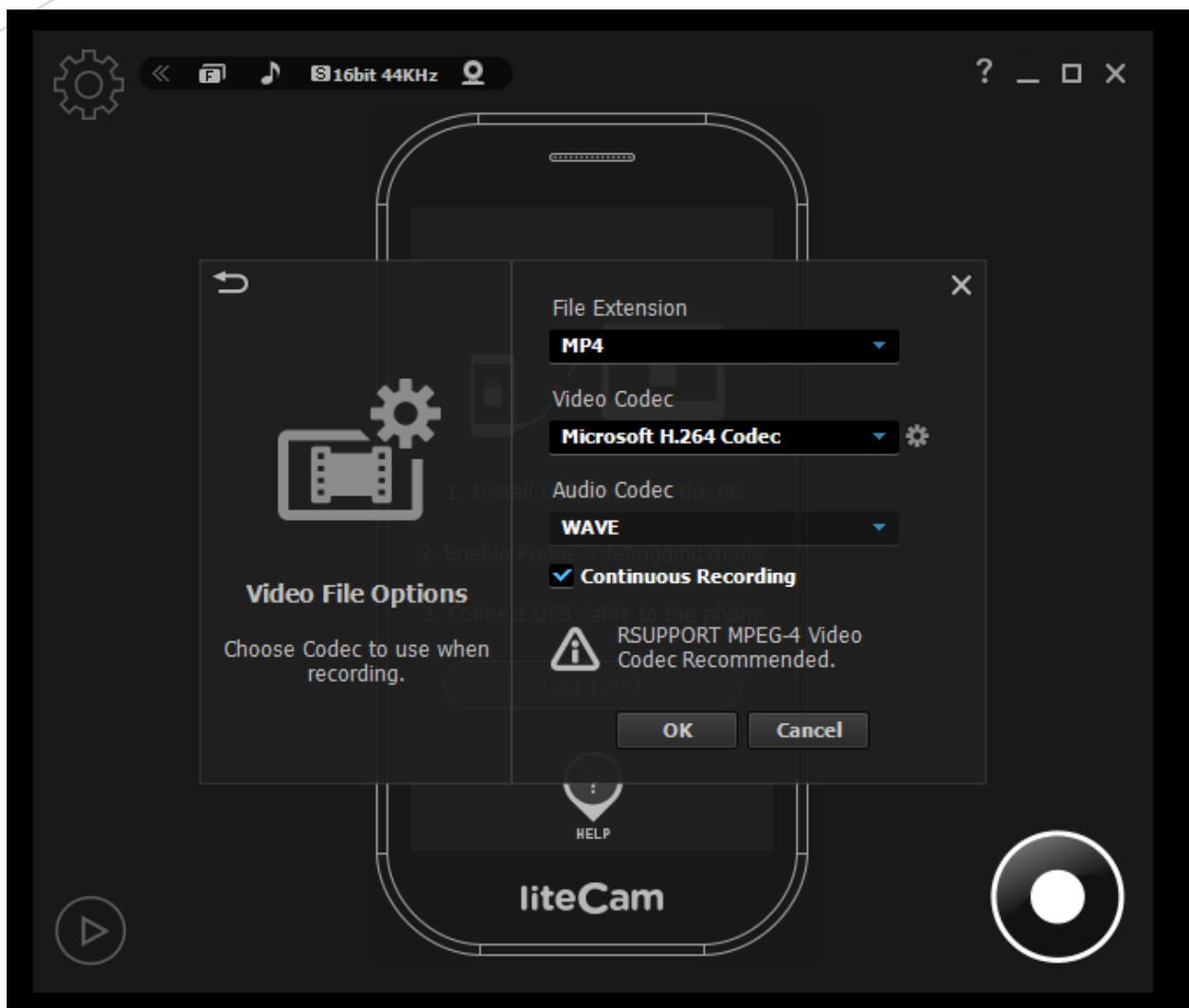
Choose the file format you wish to save your recorded files in. Select the Video and Audio Codec you wish to use, and if your computer file system is FAT 32, you will need to select “Continuous Recording” to create a new recording file when the current recording file size reaches 4GB. **Note: For computers with FAT 32 file systems maximum size of a single file is 4GB.**

Start liteCam> Option> Video Recording Options.



Select File Extension, Video Codec, and Audio Codec

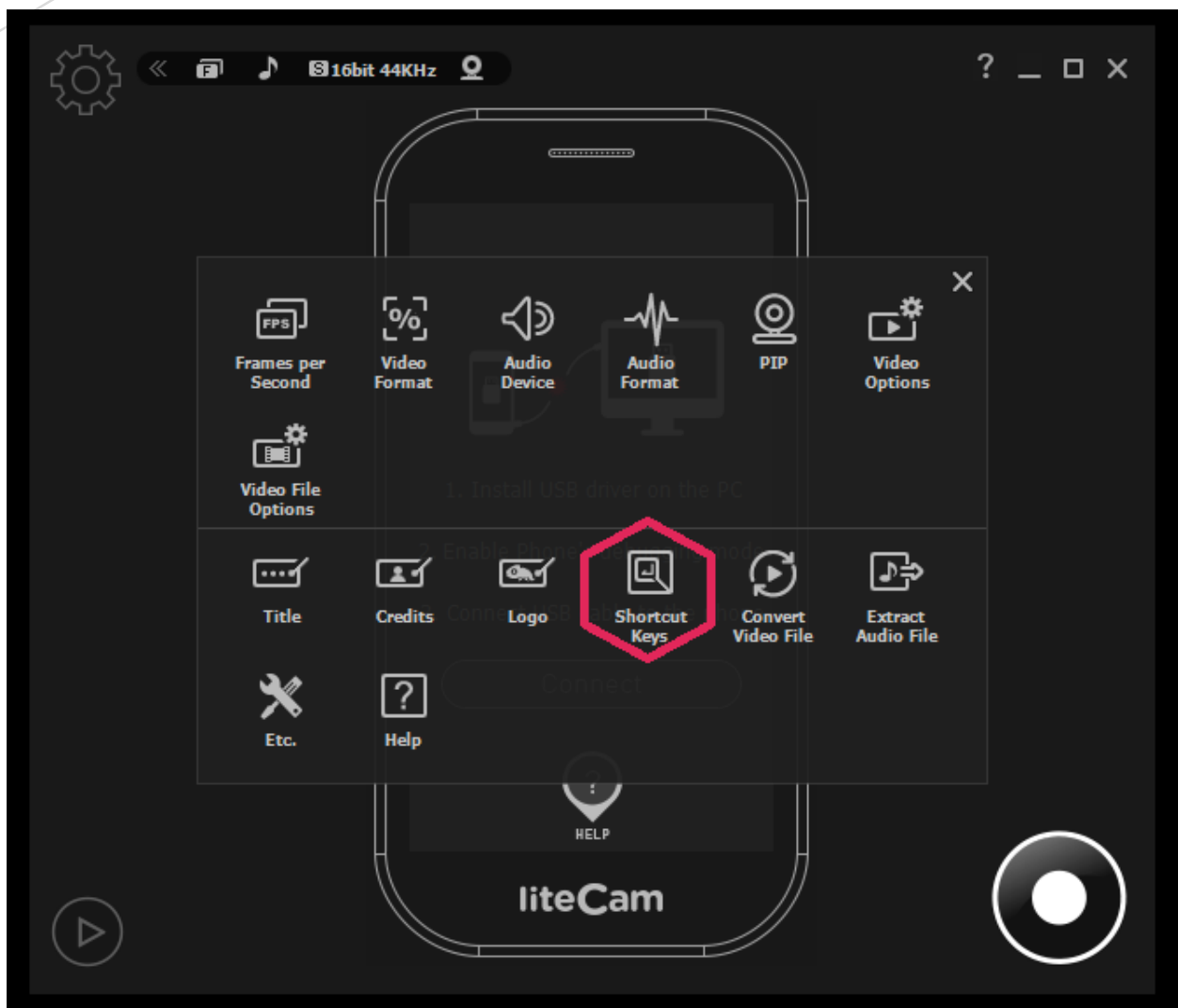
1. File Extension: AVI or MP4
2. Video Codec
3. Audio Codec
4. Continuous Recording (Only for FAT 32 File System)

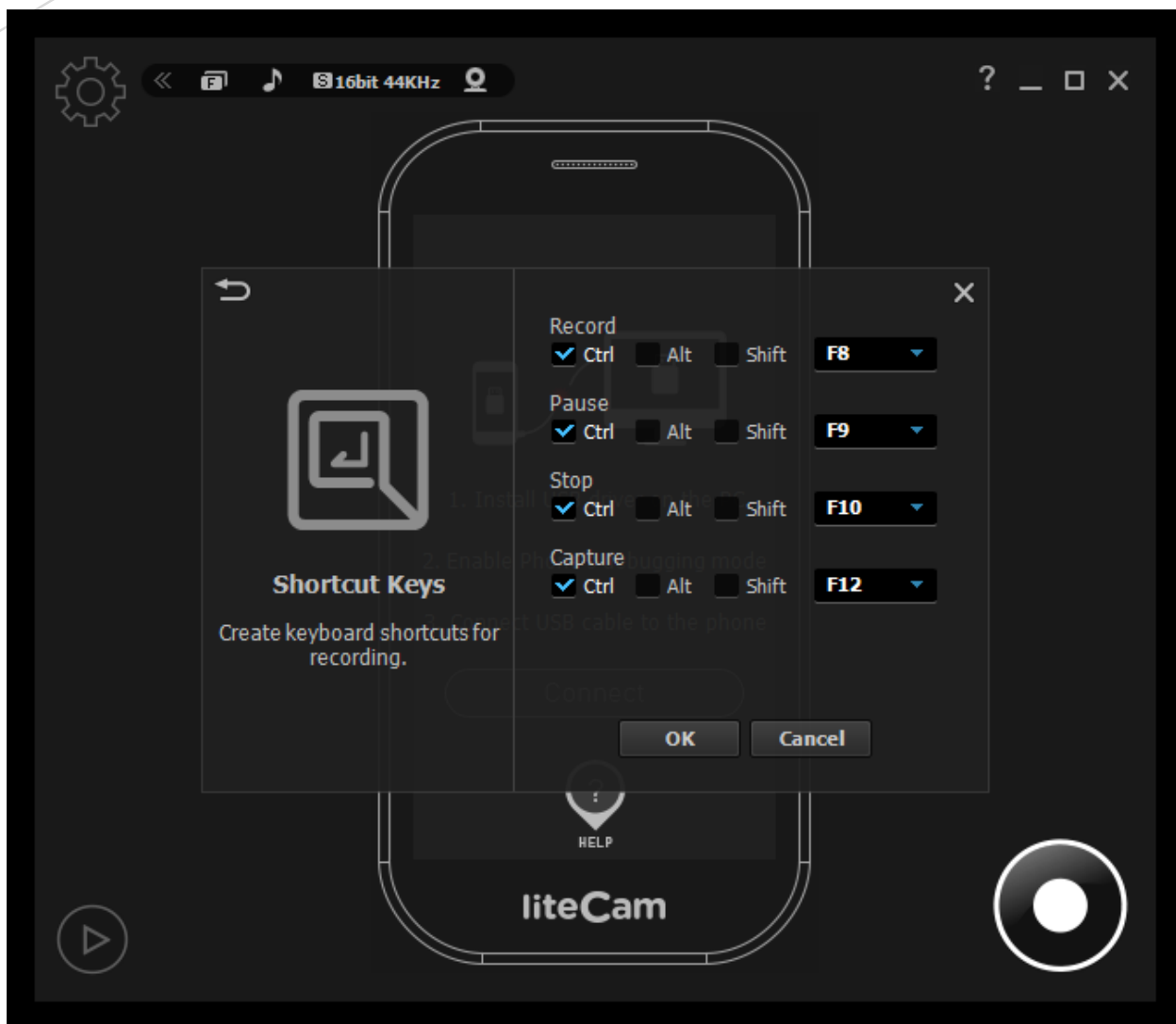


4. Shortcut Keys

Shortcut keys help provide an easier and quicker way of using liteCam HD while recording. You can create shortcut keys for the following options: "Start", "Pause", "Stop", "Drawing", and "Screen capture".

Start liteCam > Options> Shortcut Keys.





Record

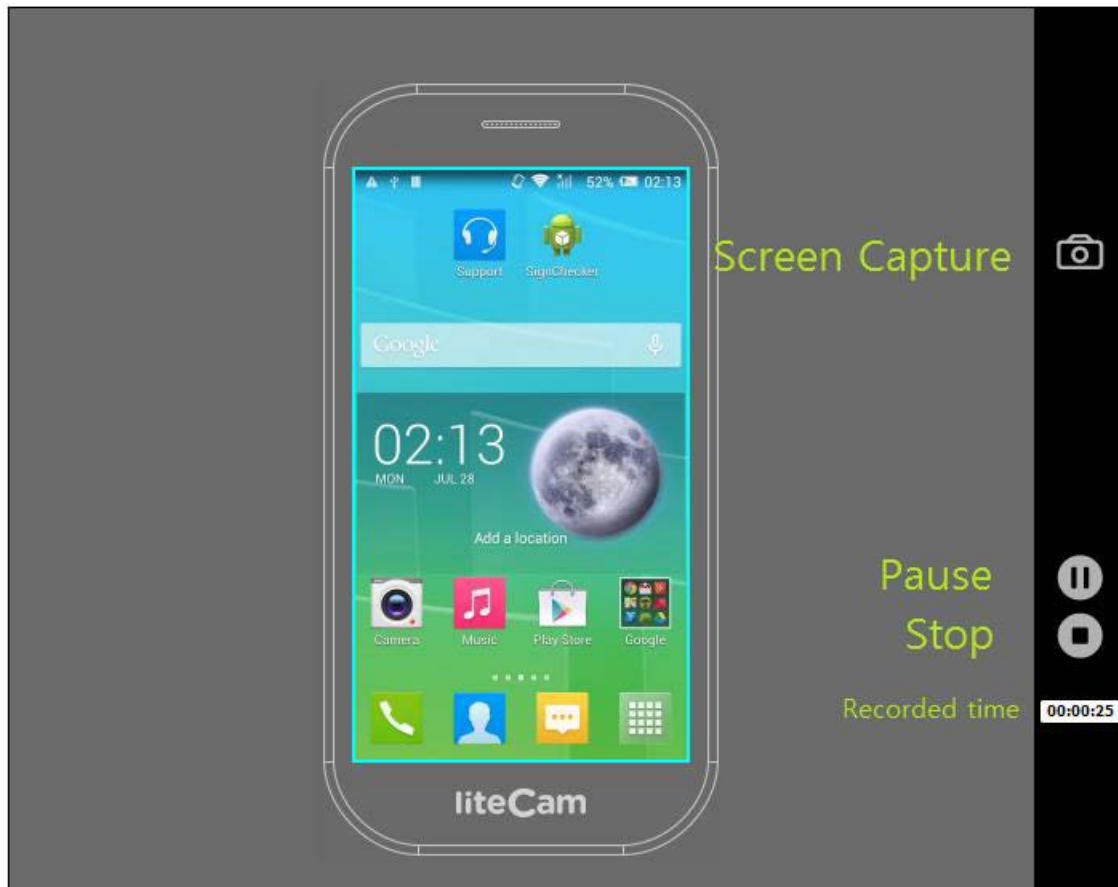
1. One-Click Recording

A simple one-click on the record button will start liteCam Android to record any activity on the screen of your Android device.

- Plug your Android device into your PC through a USB Cable** Connect your Android device to your PC through a USB cable. Make sure that your device's USB debugging is enabled and the USB driver is installed on your PC.
- Click Record button** As soon as you click the Recording button the countdown to recording will start...3 2 1.
- Finish recording** when you have finished recording, click the "Pause/Stop" button in the right corner of the window to stop the recording.

2. Stop/Pause Recording

While recording with liteCam Android, you will have the option to pause any recording, and capture screenshots.



Preview

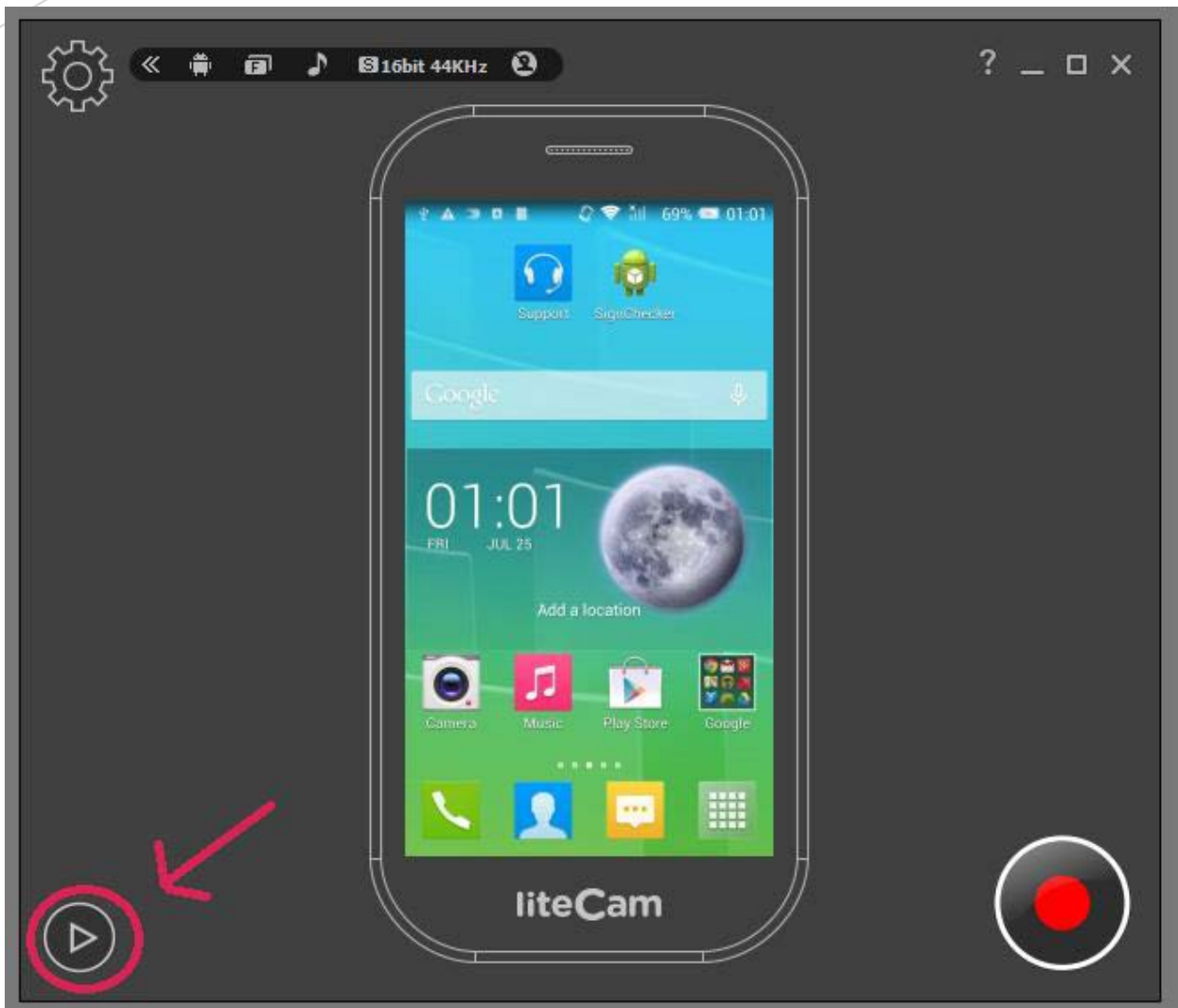
1. Select Preview

Your recorded videos and audio can be viewed in preview.

In the Preview window you can trim, convert, save as or delete your recording. You can hide or unhide the recorded file list, and you can import other files or open the work folder.

The Work Folder is where all your recorded files are saved.

Click the "Play" icon in the liteCam Android main window.



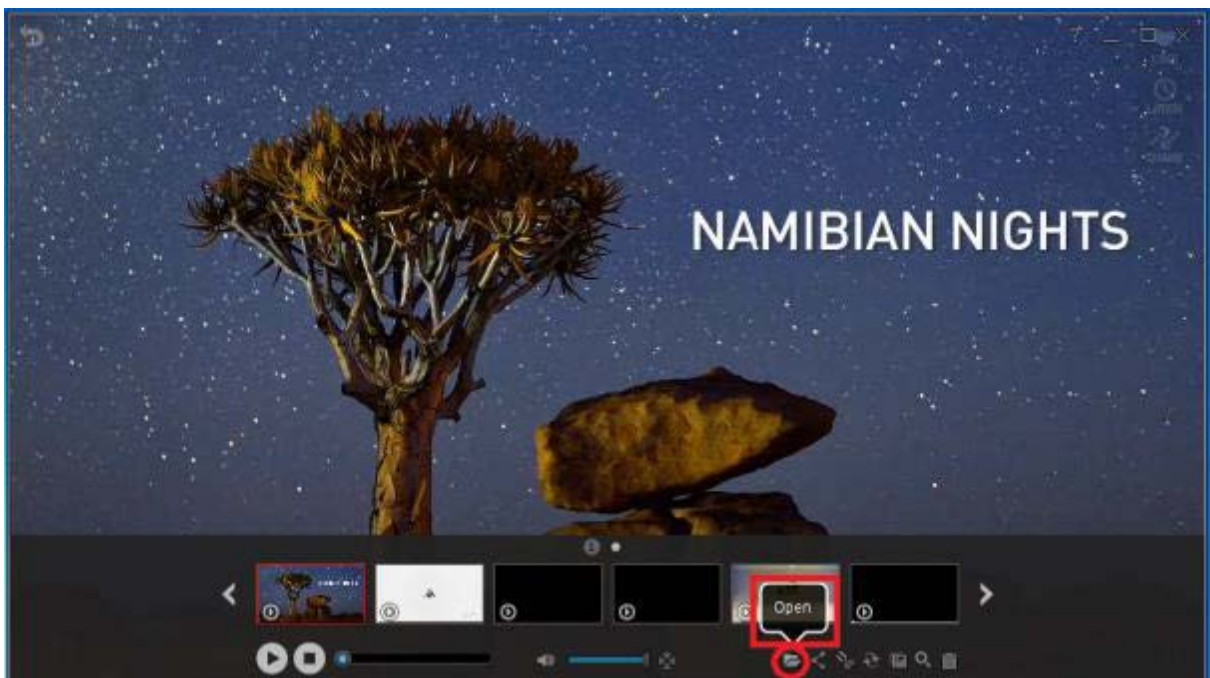
2. Full Screen

Click "Full Screen" to watch your recorded videos in full screen mode.



3. Open

Can't find your recording in Preview? Recover it by clicking "Open" as shown below.



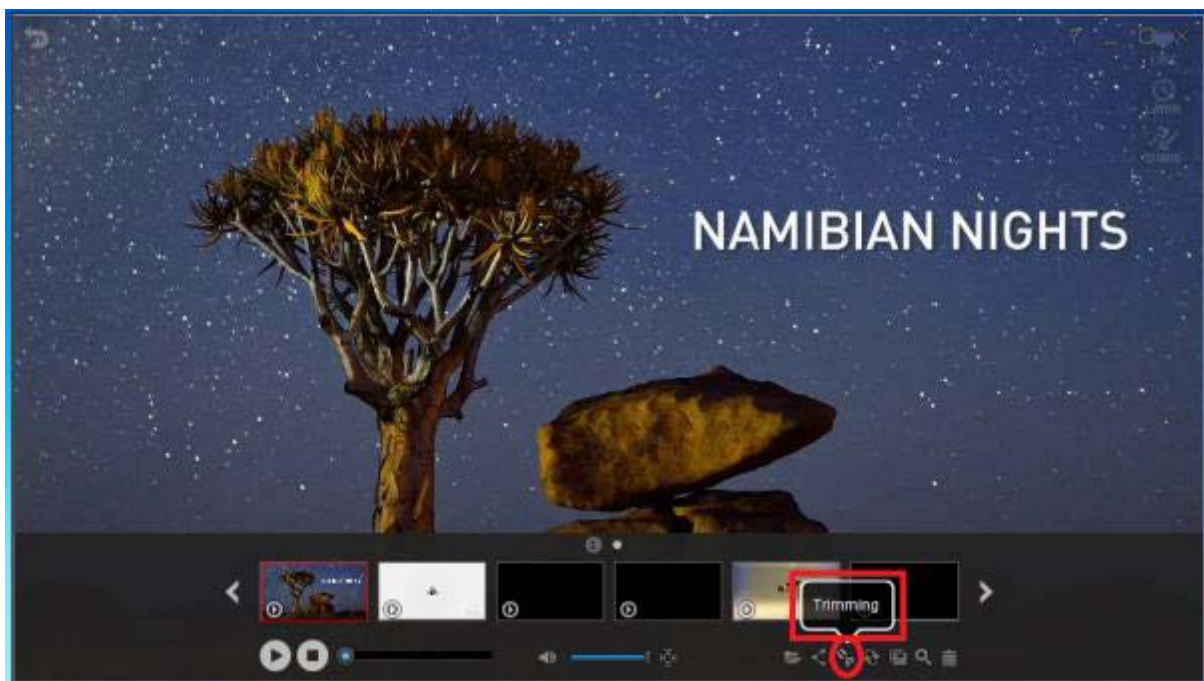
4. Open Folder

Open the work folder where you recordings are saved.



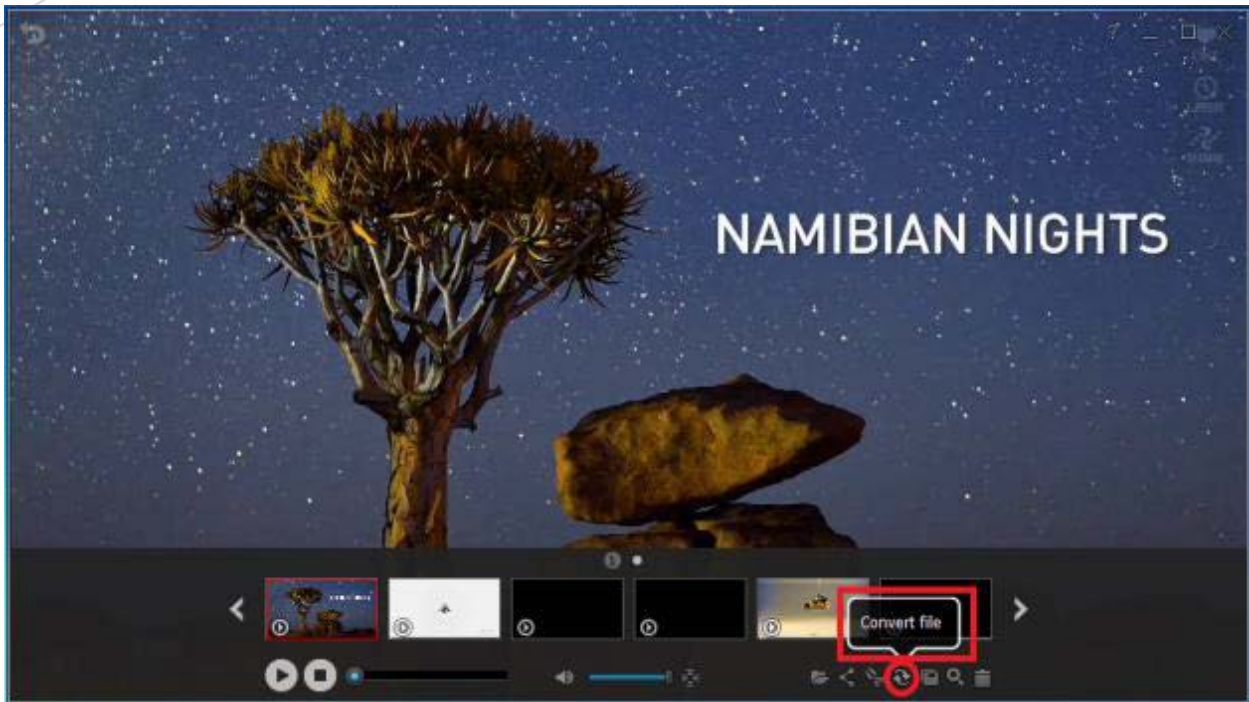
5. Trim

To trim your recorded video files, click the scissor icon.



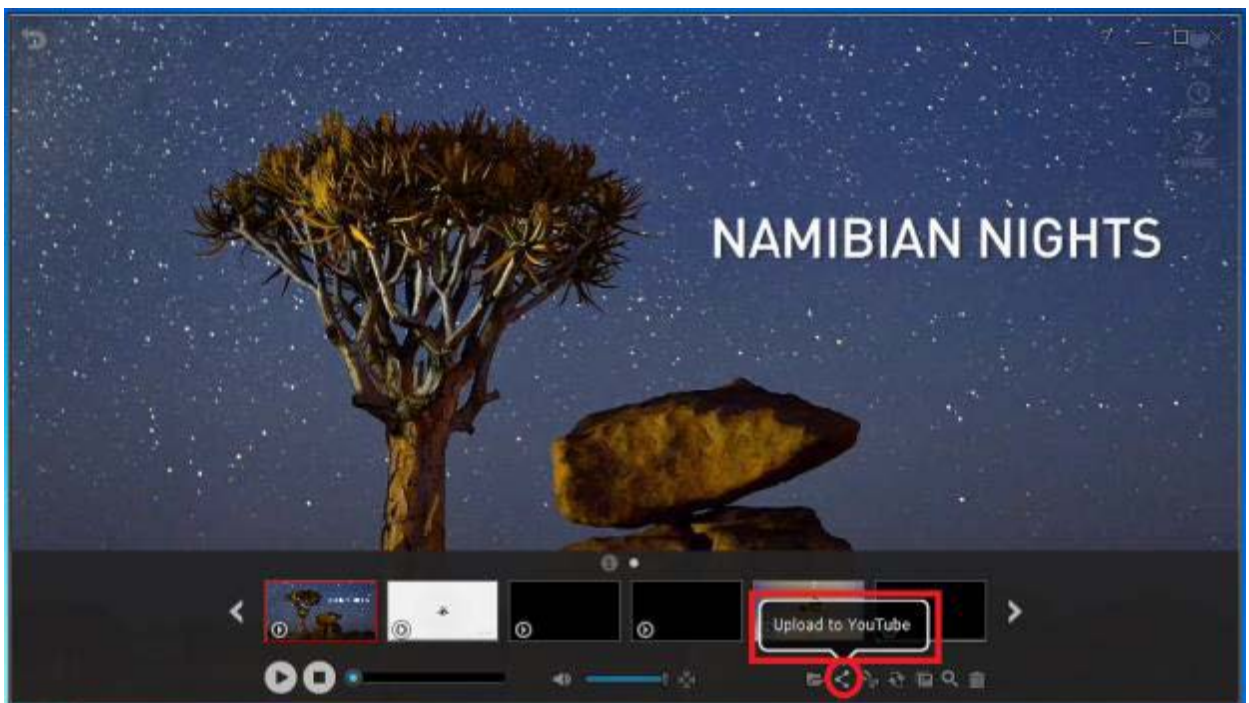
6. Convert

To convert your recorded video or audio file, click convert icon.



7. Upload to Youtube

To upload your recorded video to YouTube, click "Upload to YouTube"



Before uploading your recordings to YouTube, make sure the following apply:

1. You have an active YouTube account.
2. Your video was recorded using Video Recording Mode or Game Recording Mode

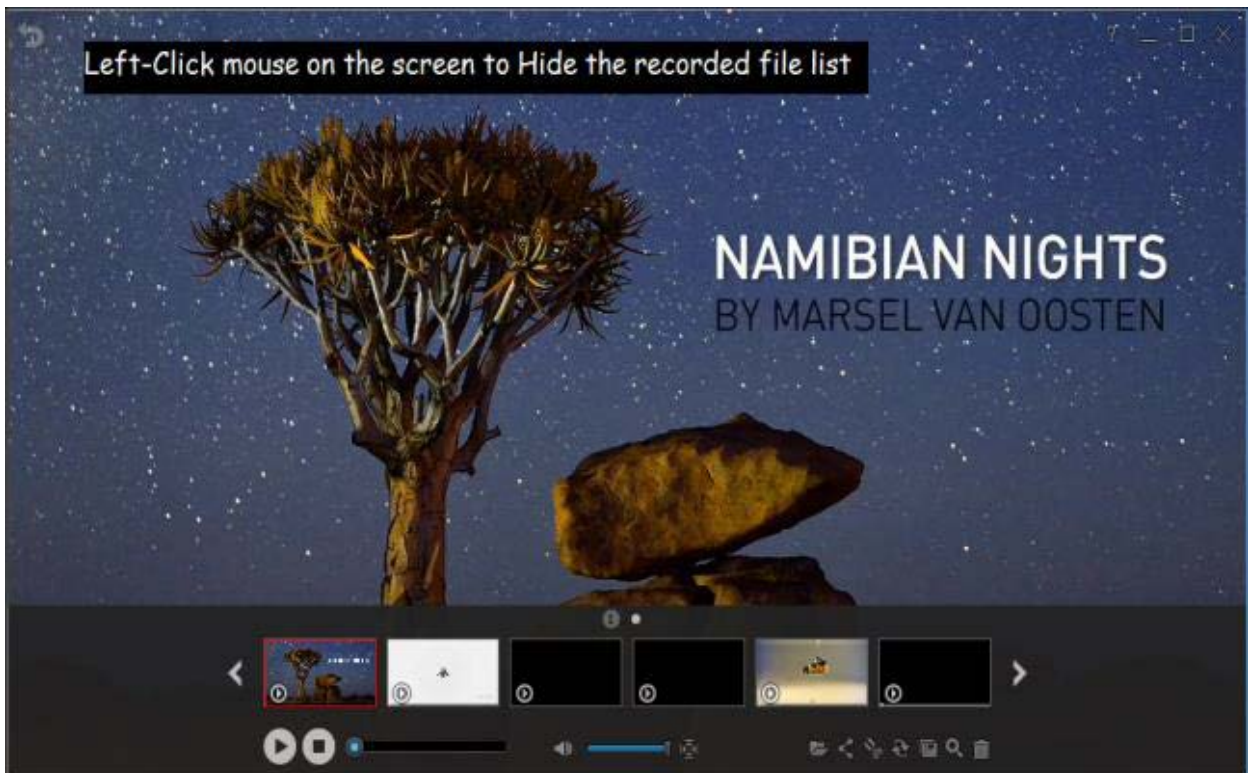
3. You have uploaded a video to your active YouTube account before.

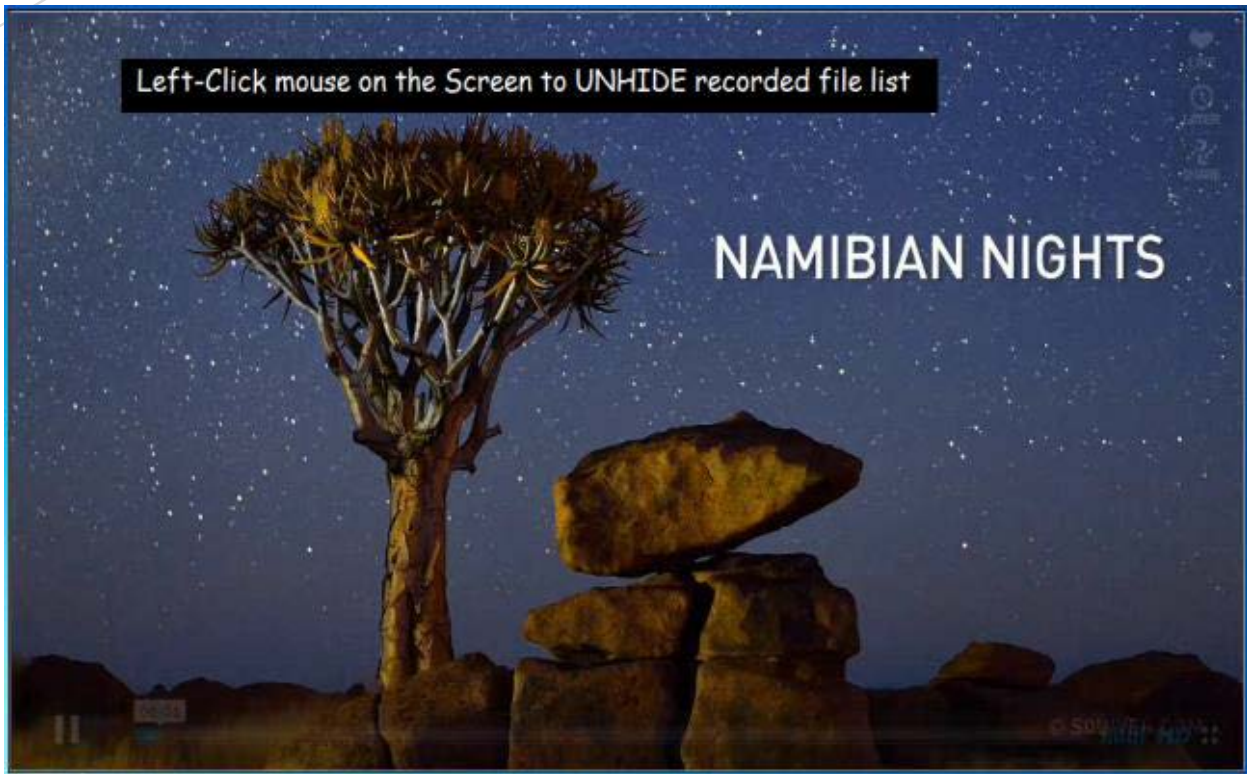
For recordings longer than 15 minutes, change your YouTube account setting options to "Increase your limit"

Link: <https://support.google.com/youtube/answer/71673?hl=en>

8. Hide/Unhide Recorded List

To hide or unhide your recorded files list, left-click on the Preview screen.





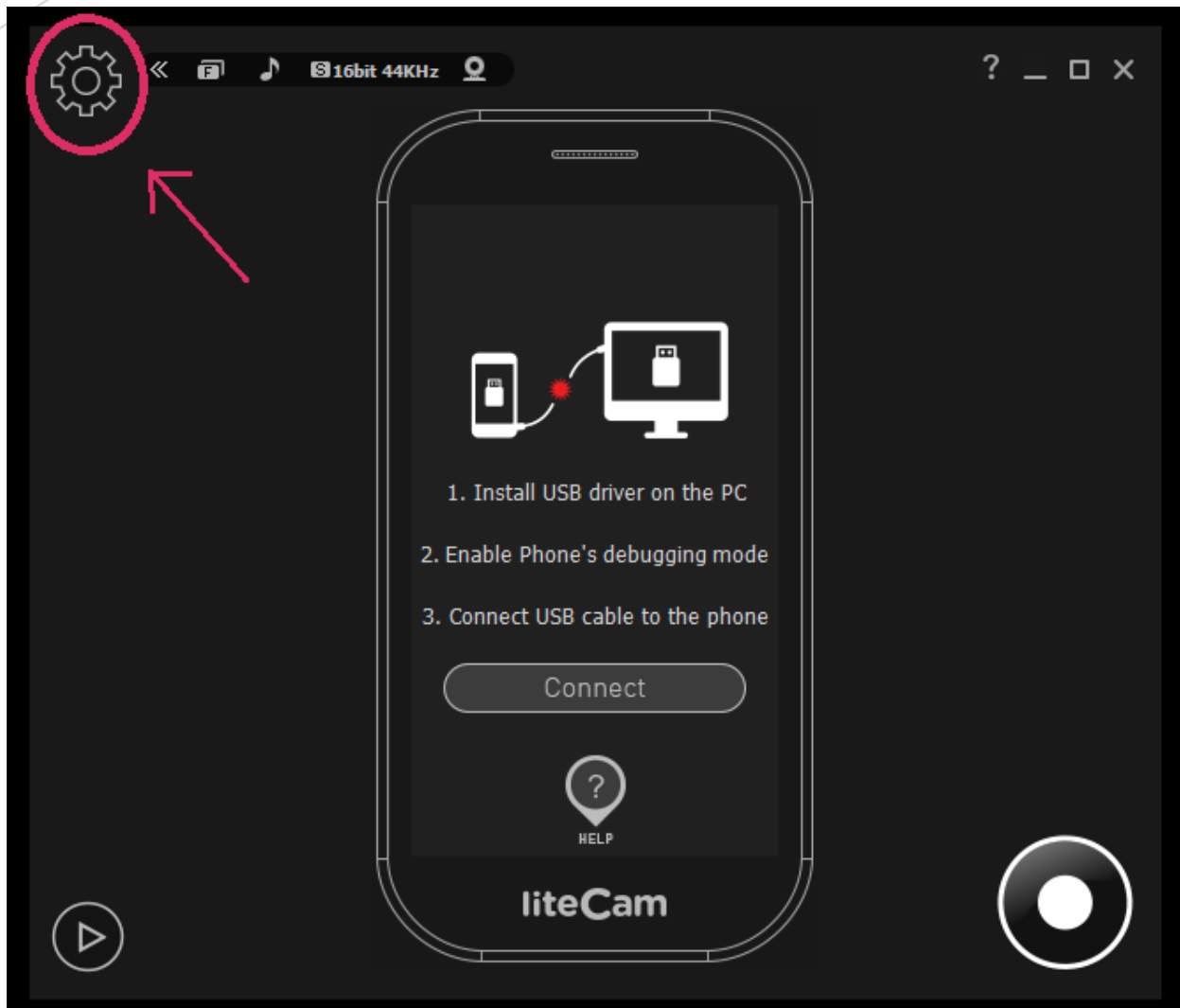
General Options

1. Frames Per Second

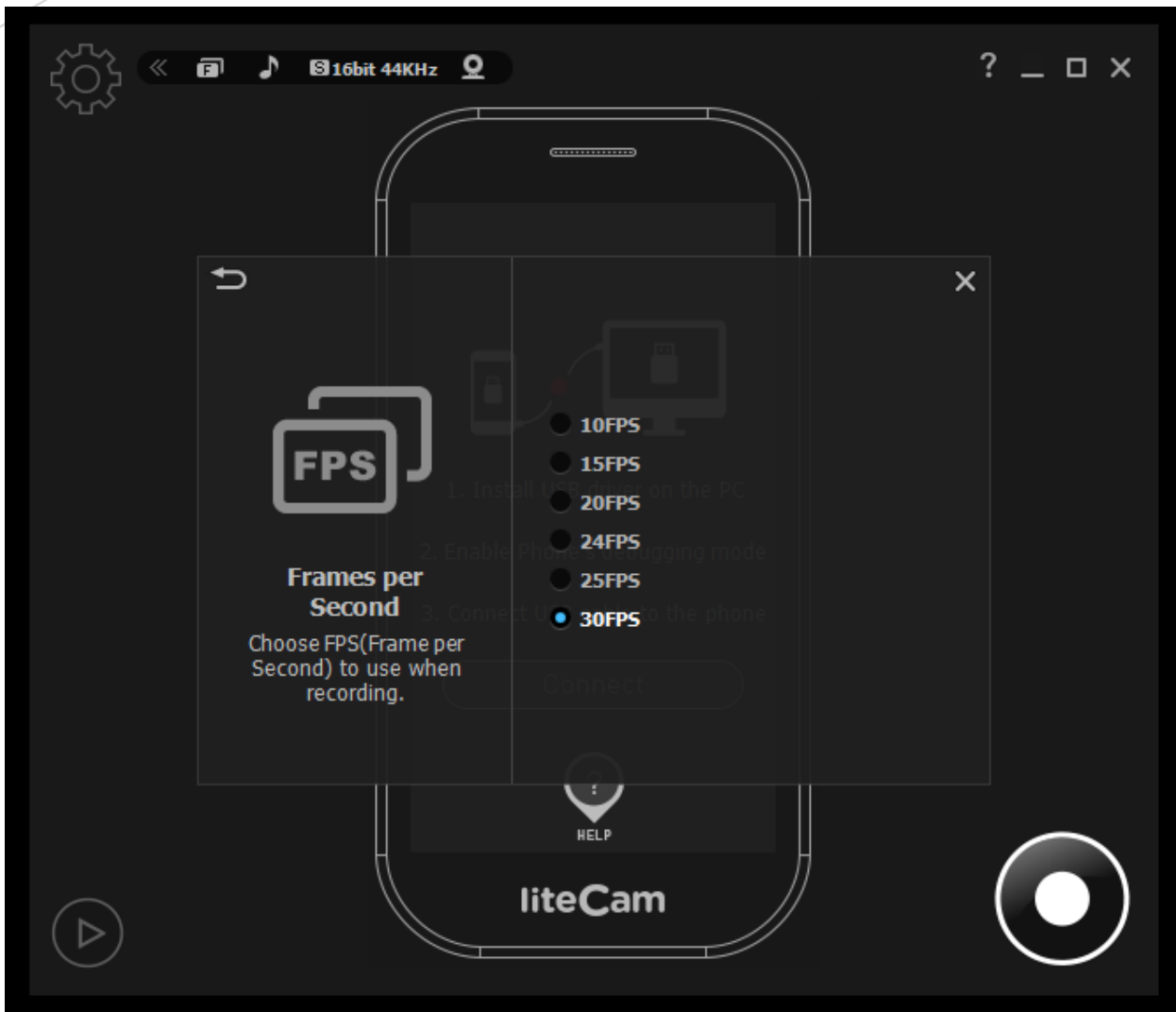
FPS measures how much information is used to store and display motion video.

The maximum FPS available to record video in General Recording and Video Recording is 30 FPS.

Start liteCam> Frames Per Second> select your desired FPS



You can choose up to 30FPS.



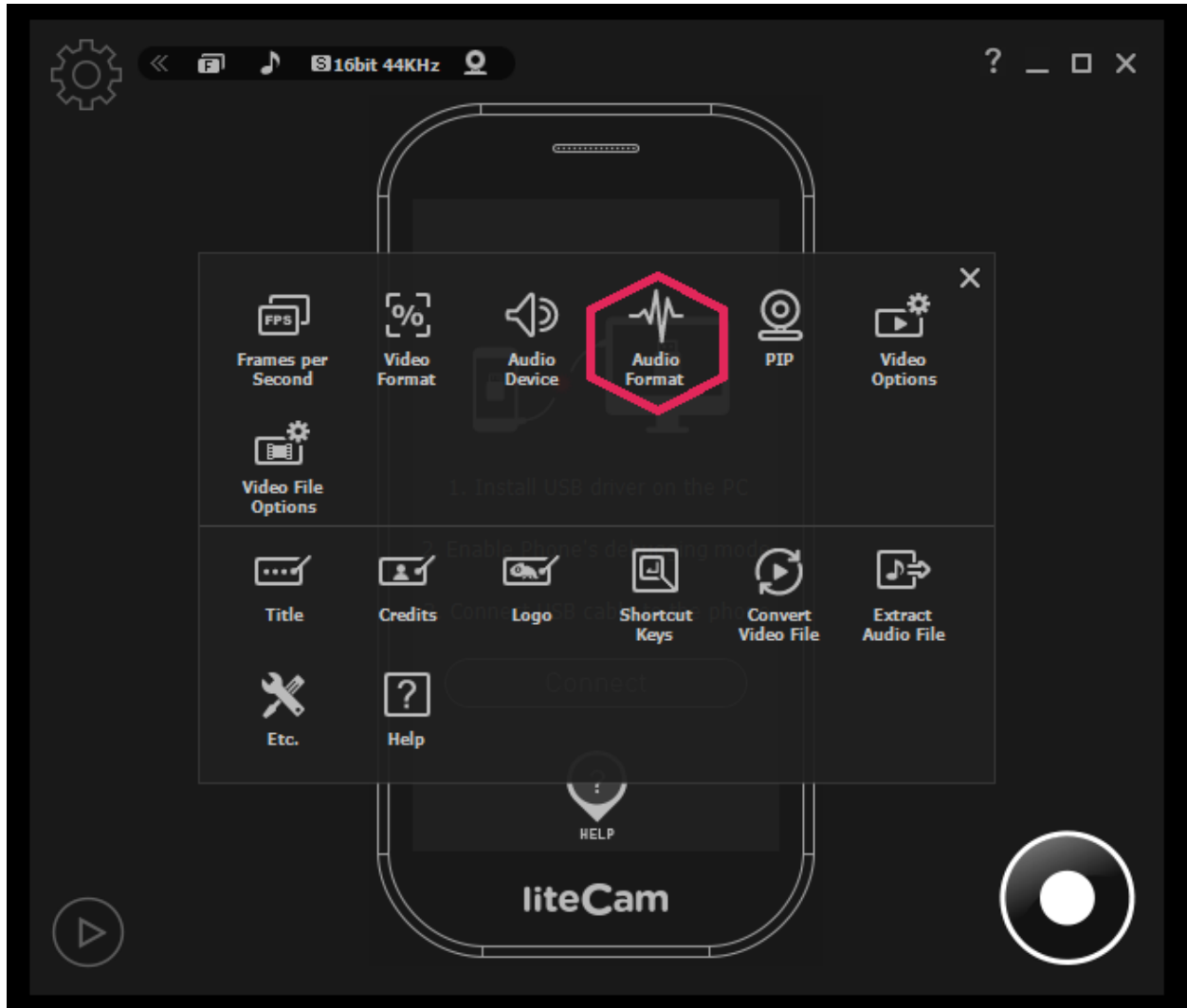
2. Audio Format

Different audio formats have different quality. You can choose the quality you wish to use, we recommend "Mono, 16bit, 22KHz"

To choose the audio quality you wish to use while recording.

- Mono, 16bit, 11 KHz
- Stereo, 16bit, 48 KHz: record channels, bit, and sampling rate.
- System Default Settings: record system sounds in Windows Vista, 7, 8, 10.
- No Audio: exclude sounds from recording.

Start liteCam> Options> Audio Format

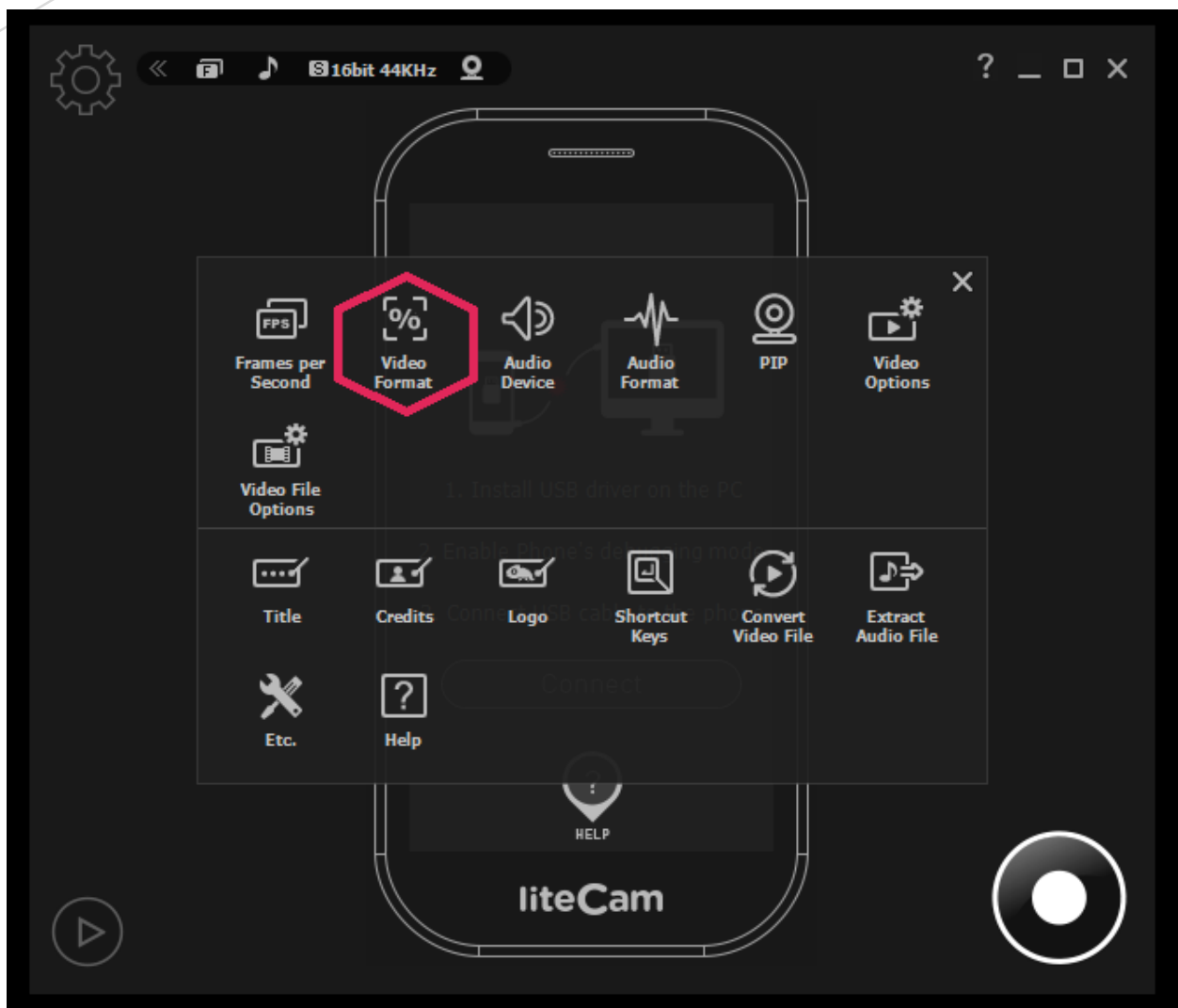




3. Video Format

The resolution of your screen can be selected under the Video Format option. There are many options to choose from.

Start liteCam Game> Option> Video Format



Select Video Format.

You can choose between 10 and 100%



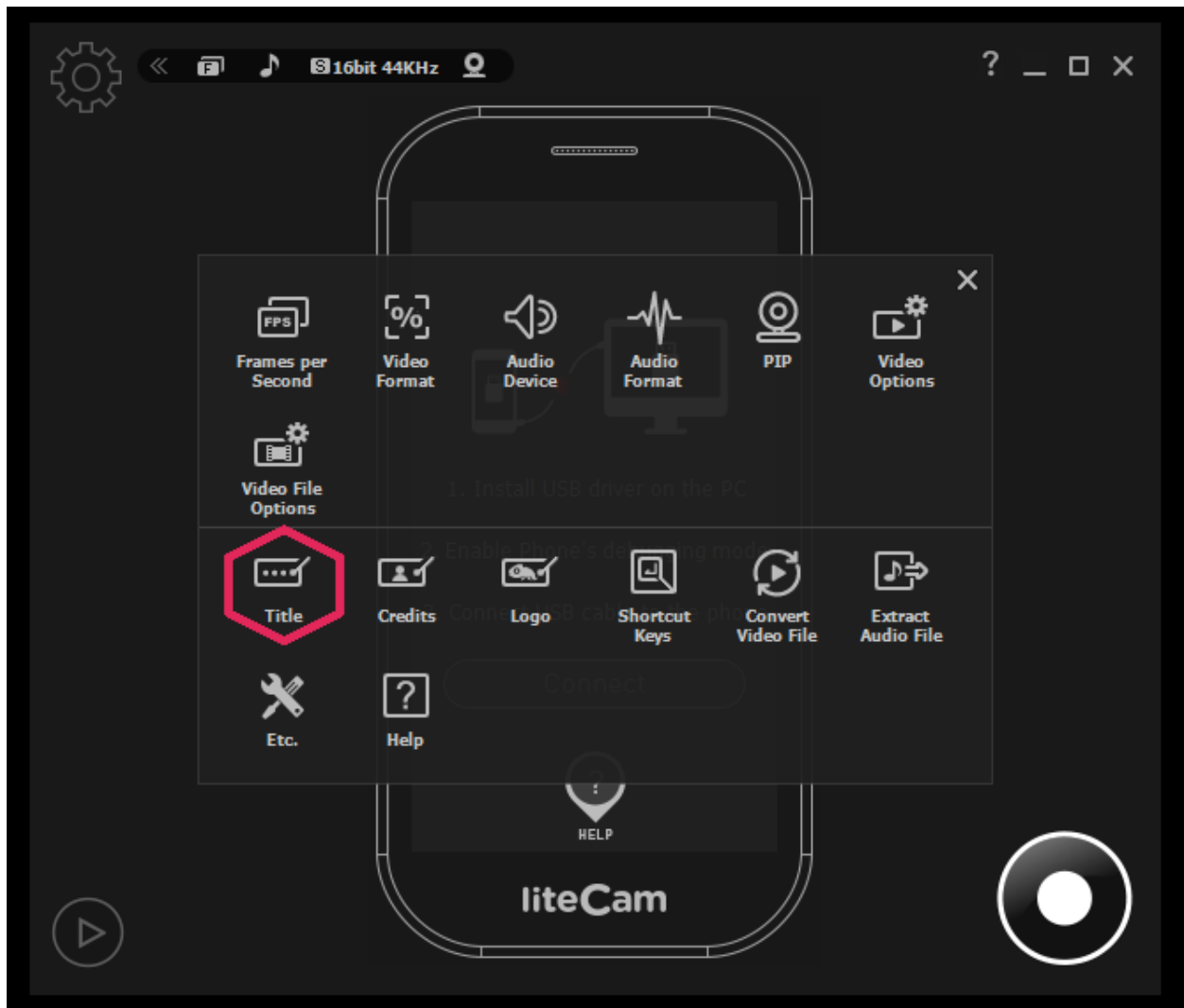
Advance Recording Option

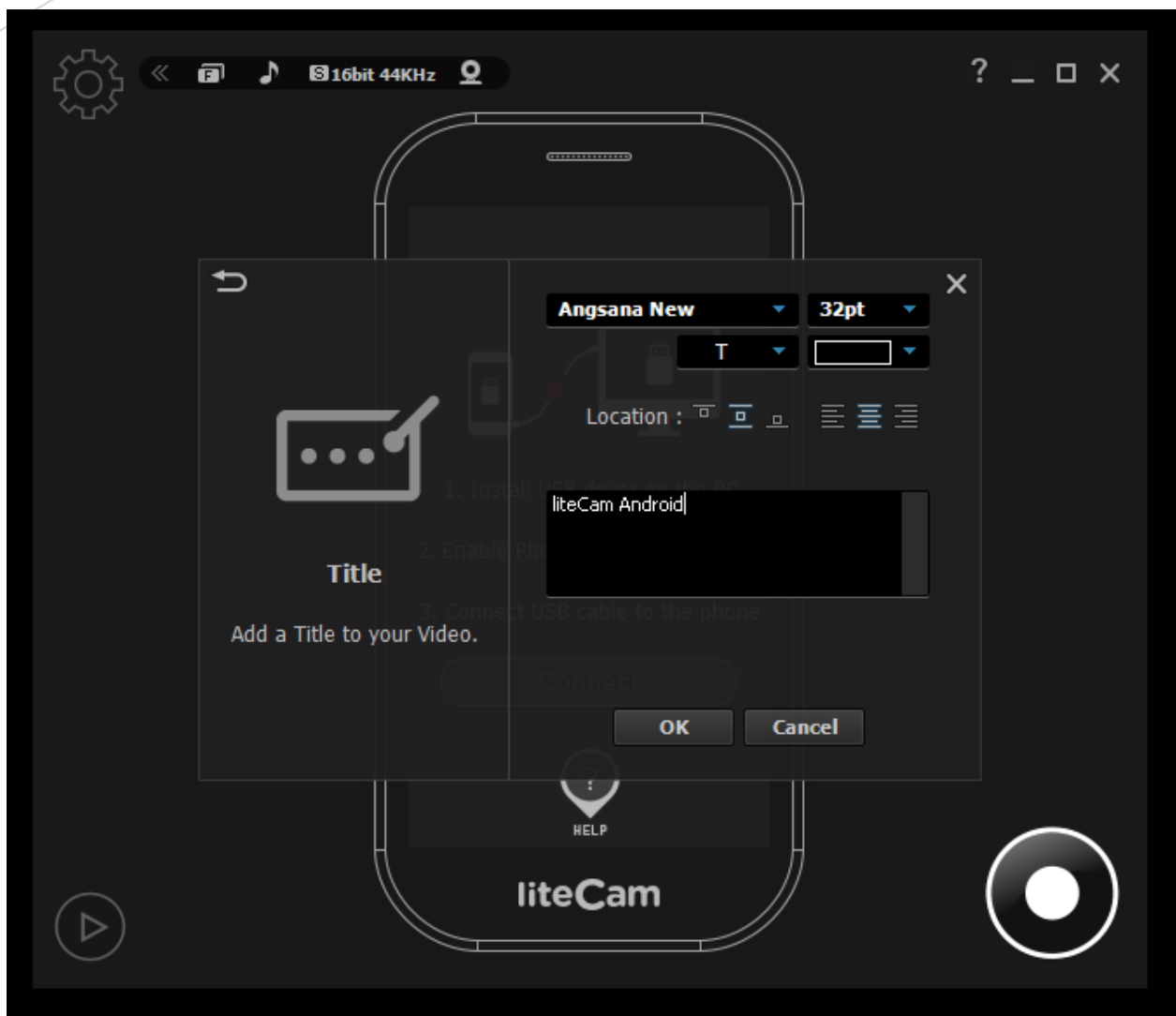
1. Title

To add a title to your recording, select "Title" in the settings window.

Choose your favorite font, font size, text color, title location, and alignment to create your title.

Start liteCam HD> Options> Title.



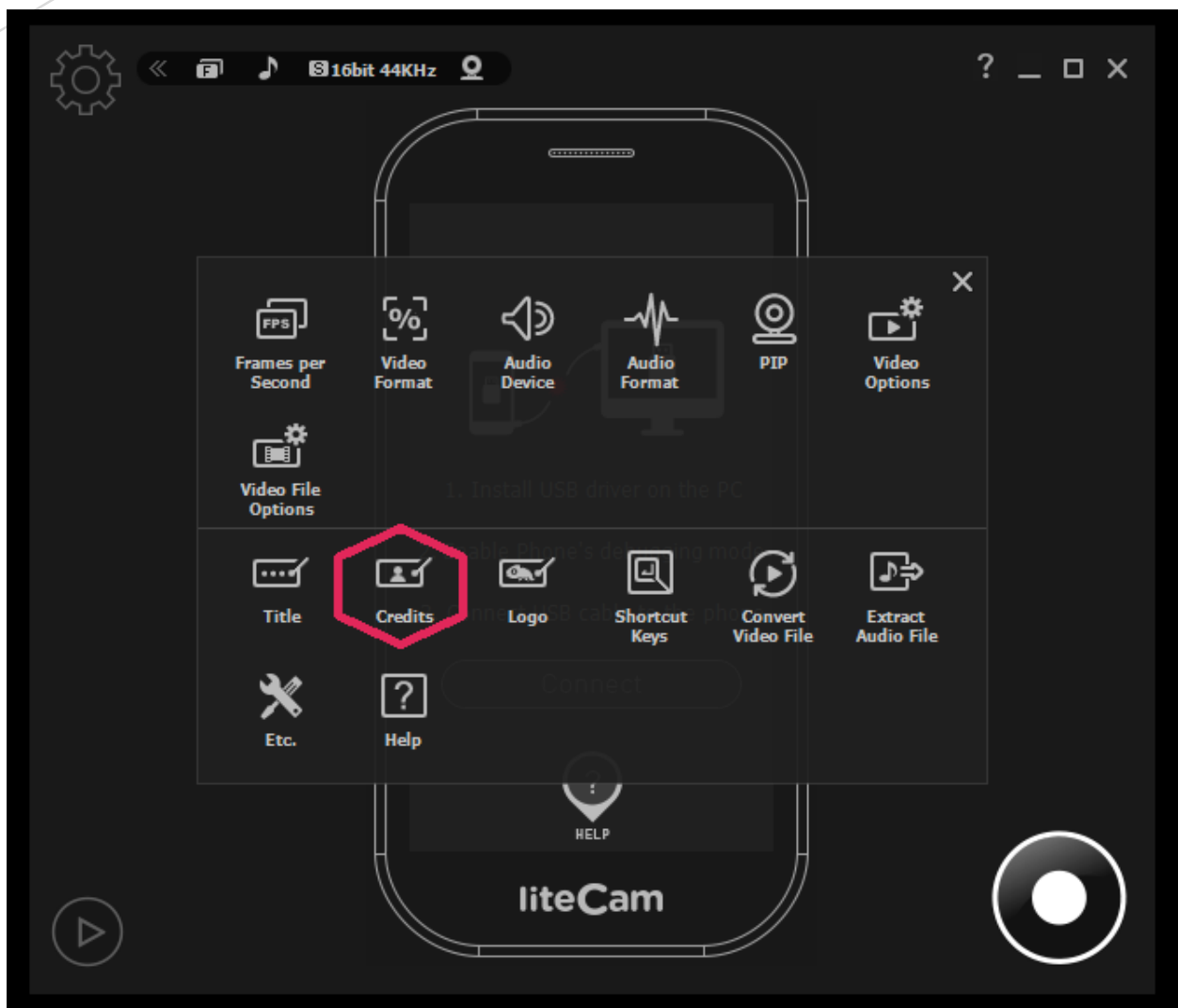


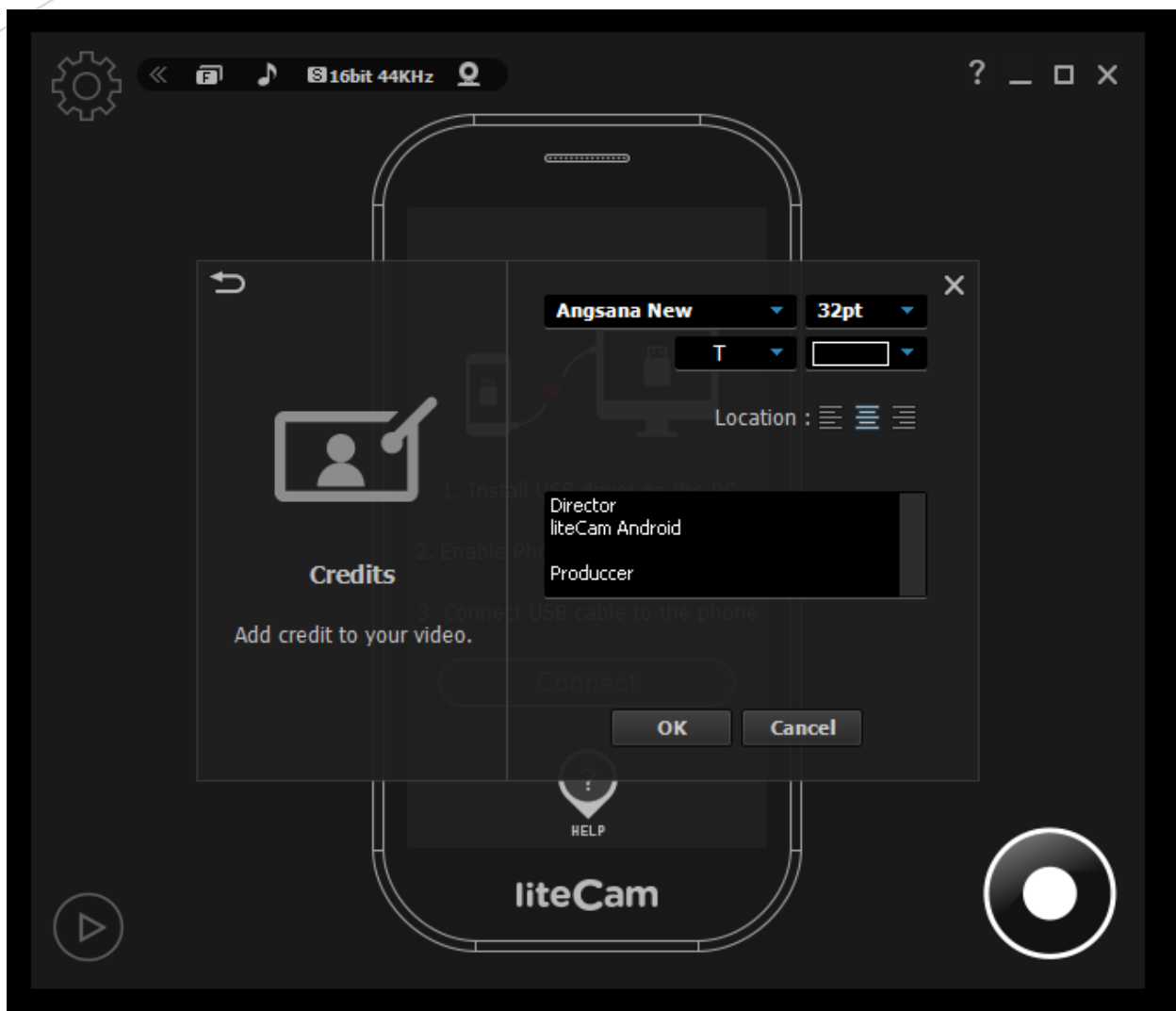
2. Credits

To add credits to the end of your recording, select "Credit" in the settings window.

Choose your favorite font, font size, text color, title location, and alignment to create your ending credits.

Start liteCam HD > Options > Credits





3. Logo

With liteCam Android, you can add your own logo to your recording.

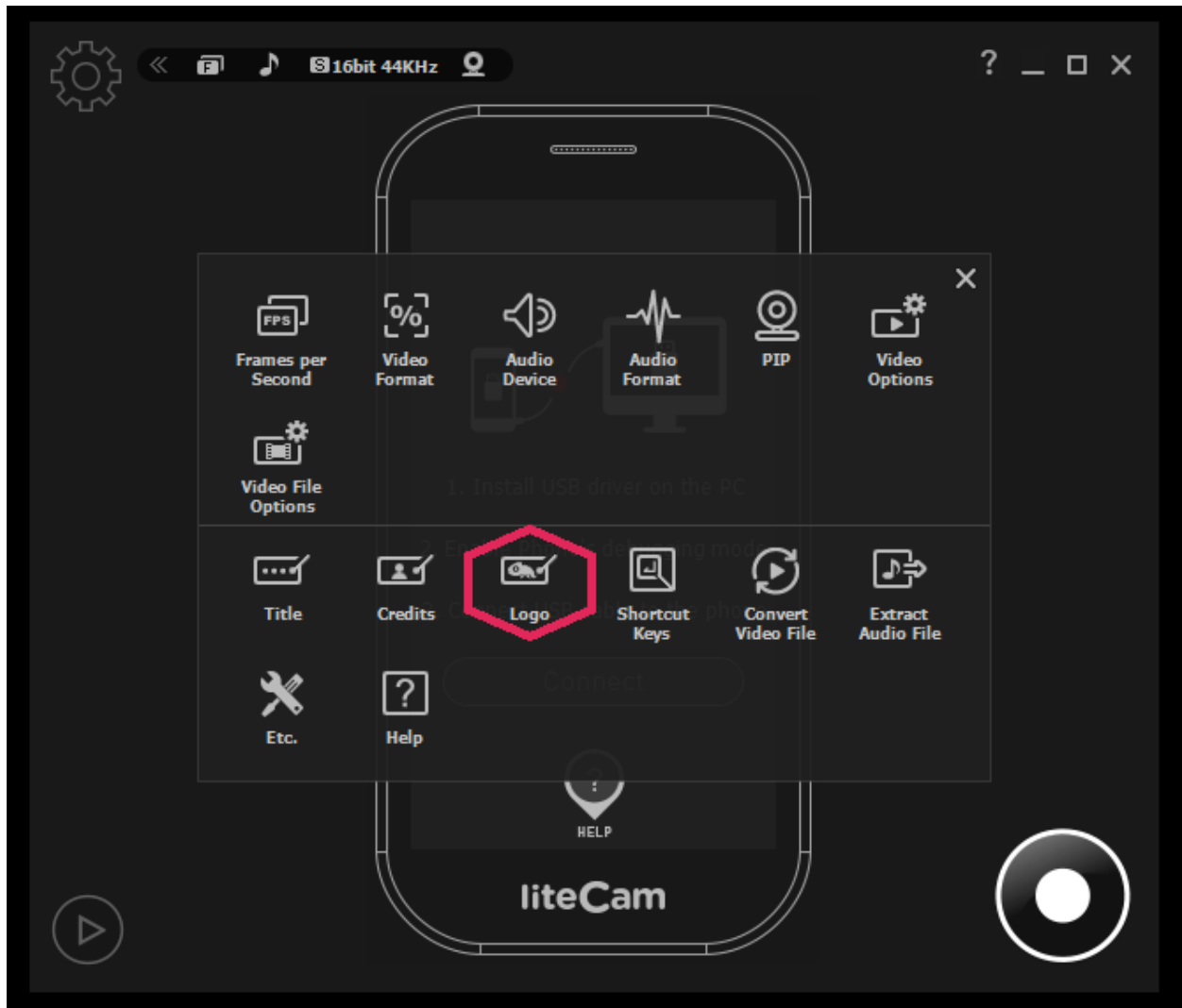
To add a logo to your recording, select "Logo" in the settings window and import a file to use.

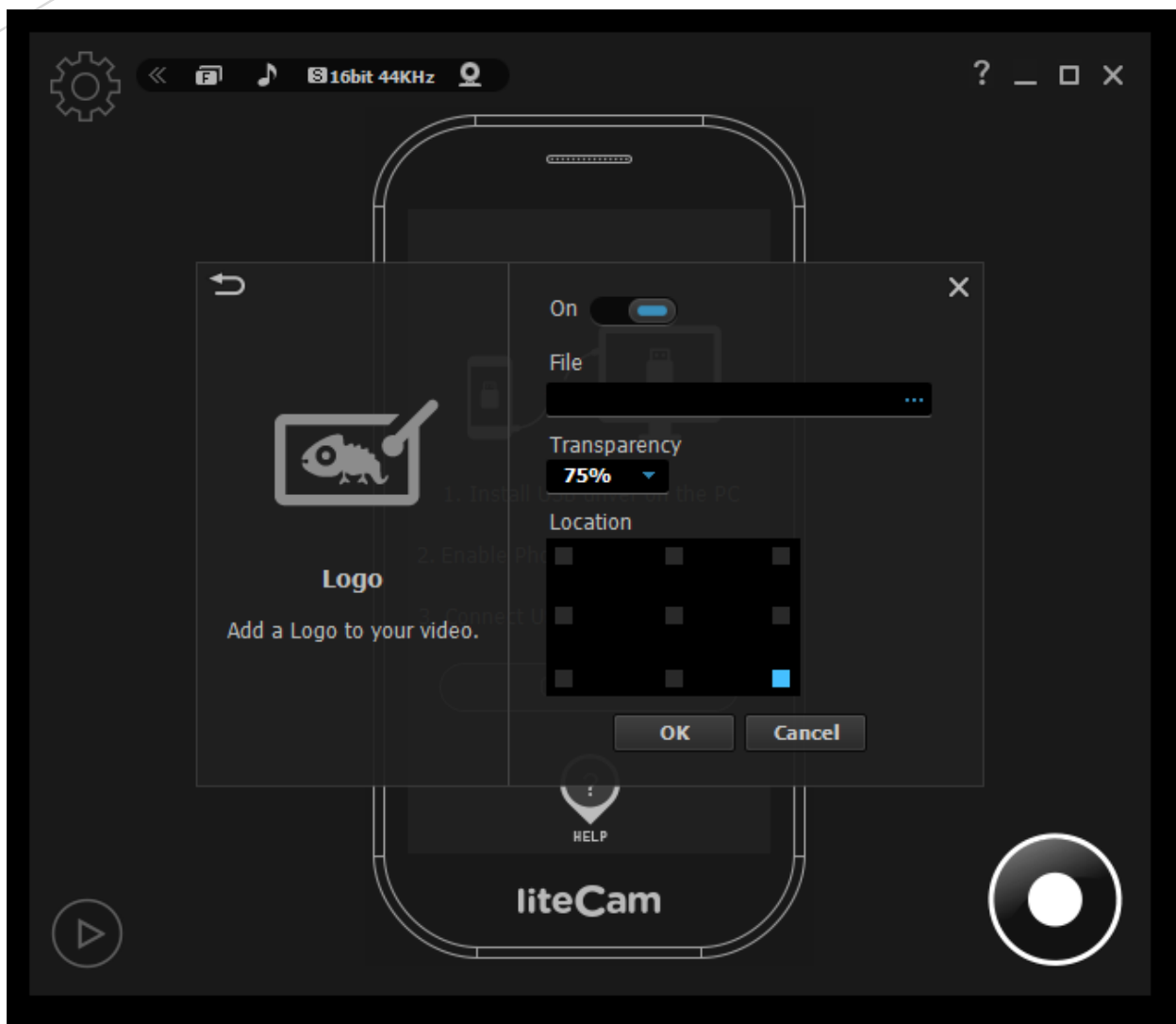
Next, select the transparency and location of the selected logo.

You can adjust your logo with the following settings:

- On/Off:** toggle the switch to insert logo or to not include it.
- File:** import logo file.
- Transparency:** control the image's transparency.
- Location:** indicate where the image is displayed.

Start liteCam HD > Options > Logo





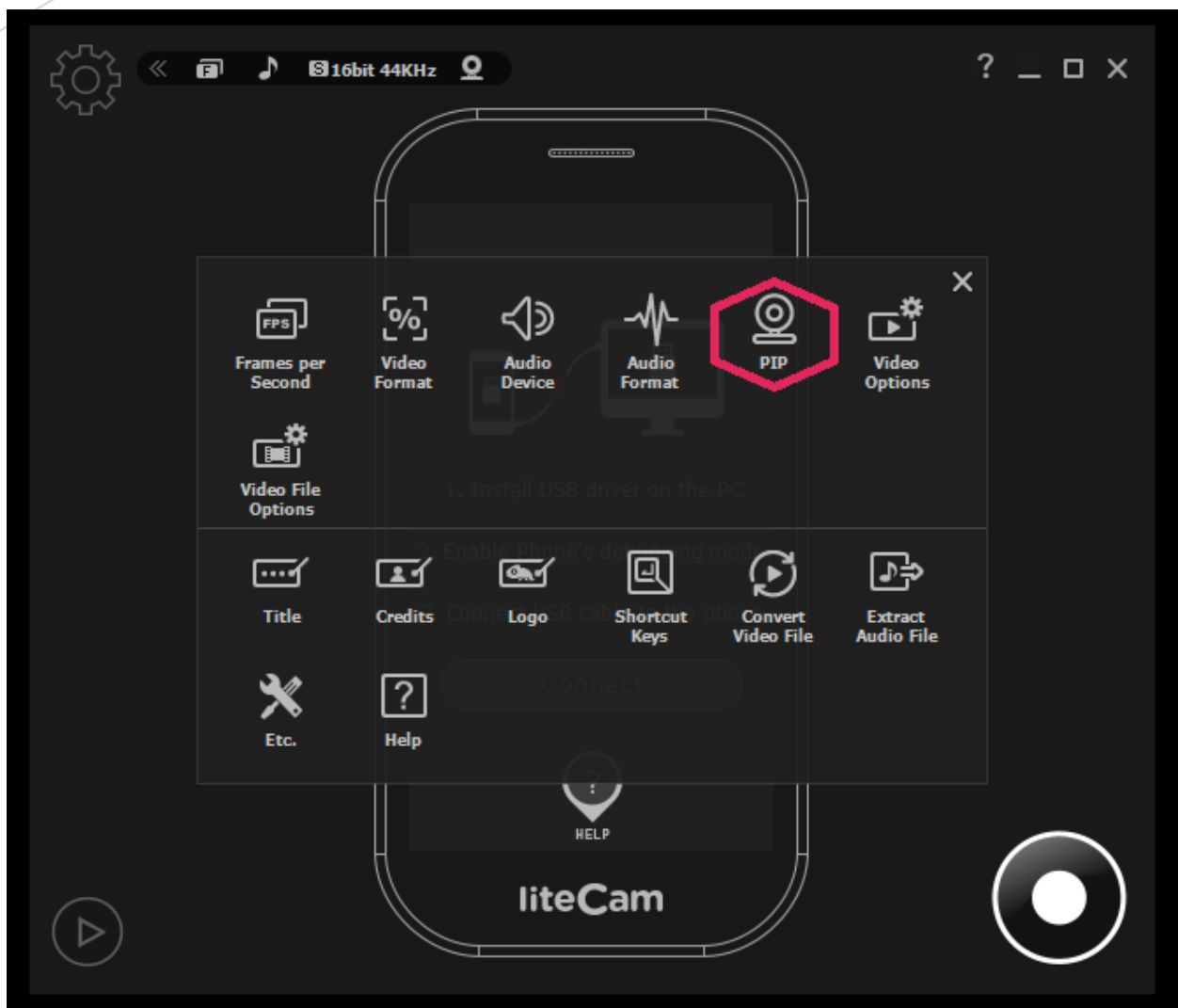
4. PIP

Simultaneously show your active speech in the corner of your recording with the Picture-in-Picture (PIP) function to include yourself in the video.

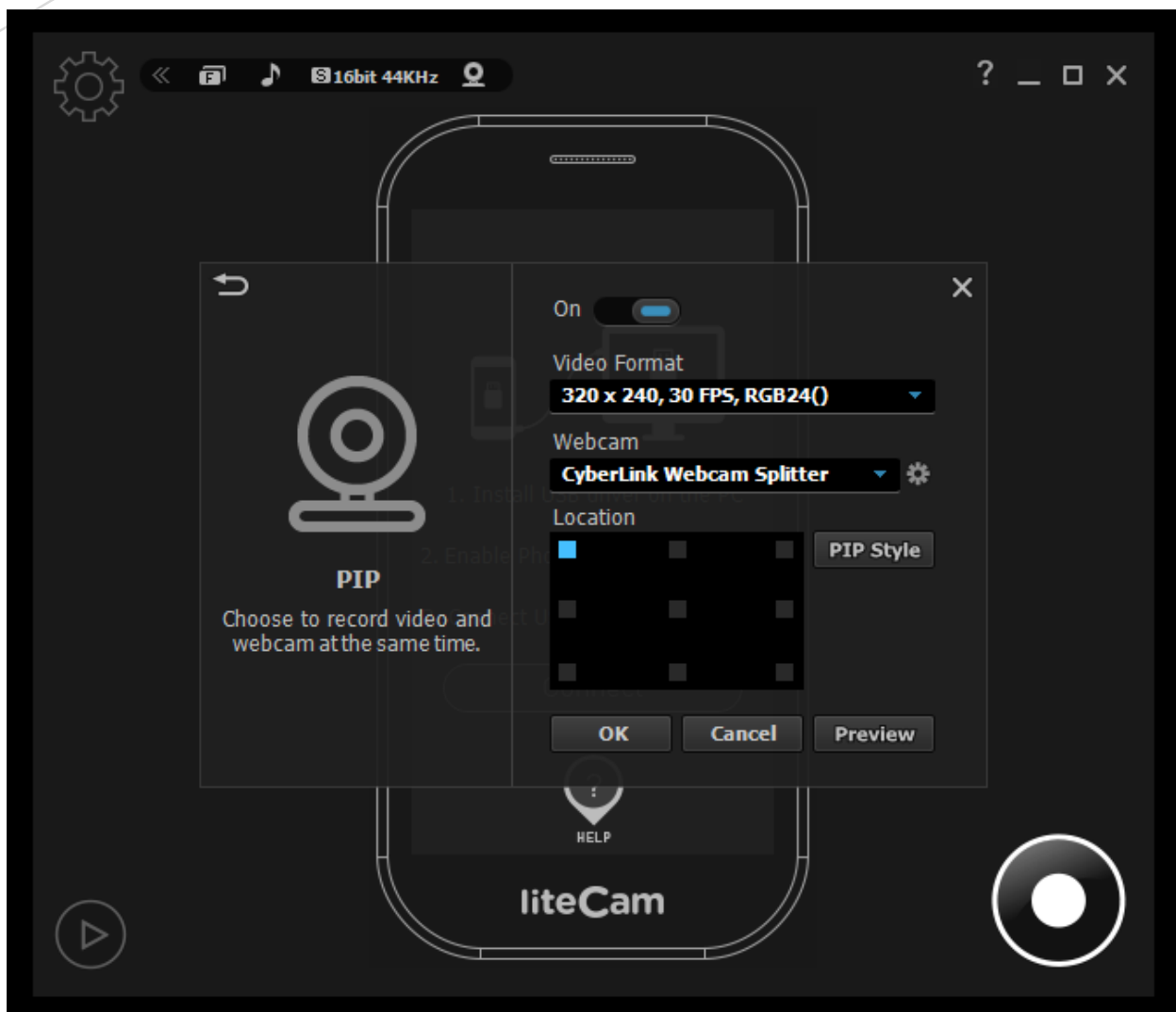
To record and use your webcam at the same time:

- On/Off:** toggle switch to activate PIP webcam recording.
- Video Format:** select the webcam resolution.
- Webcam:** Select webcam installed on your PC
- Option Button:** check the webcam's property.
- Location:** where PIP will display in your recording.
- PIP Style:** select the style of the PIP window.
- Preview:** test how PIP will appear.

Start liteCam HD > Options > PIP



Switch "ON" to enable PIP webcam recording.

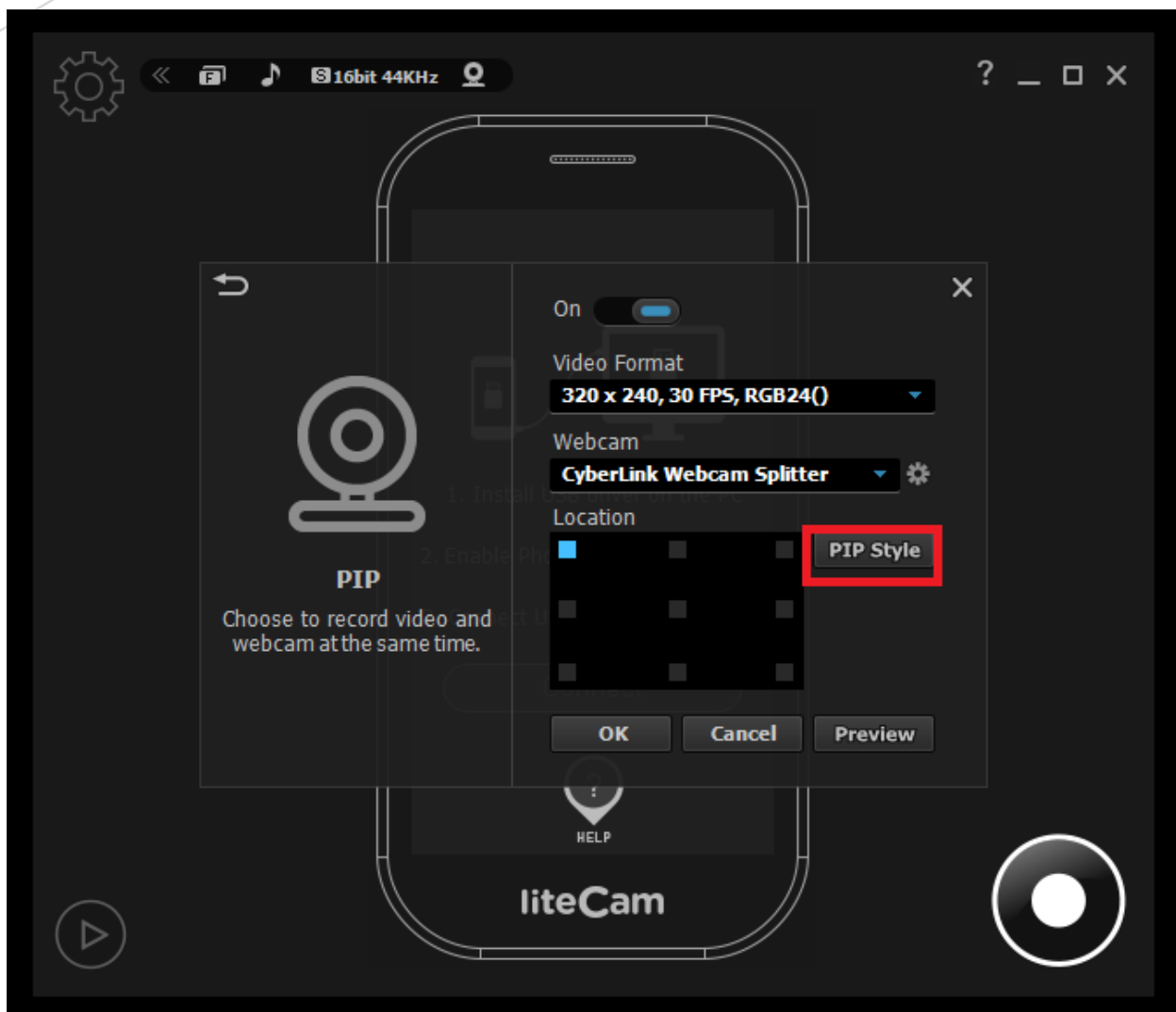


■ **Solution for PIP interference while recording**

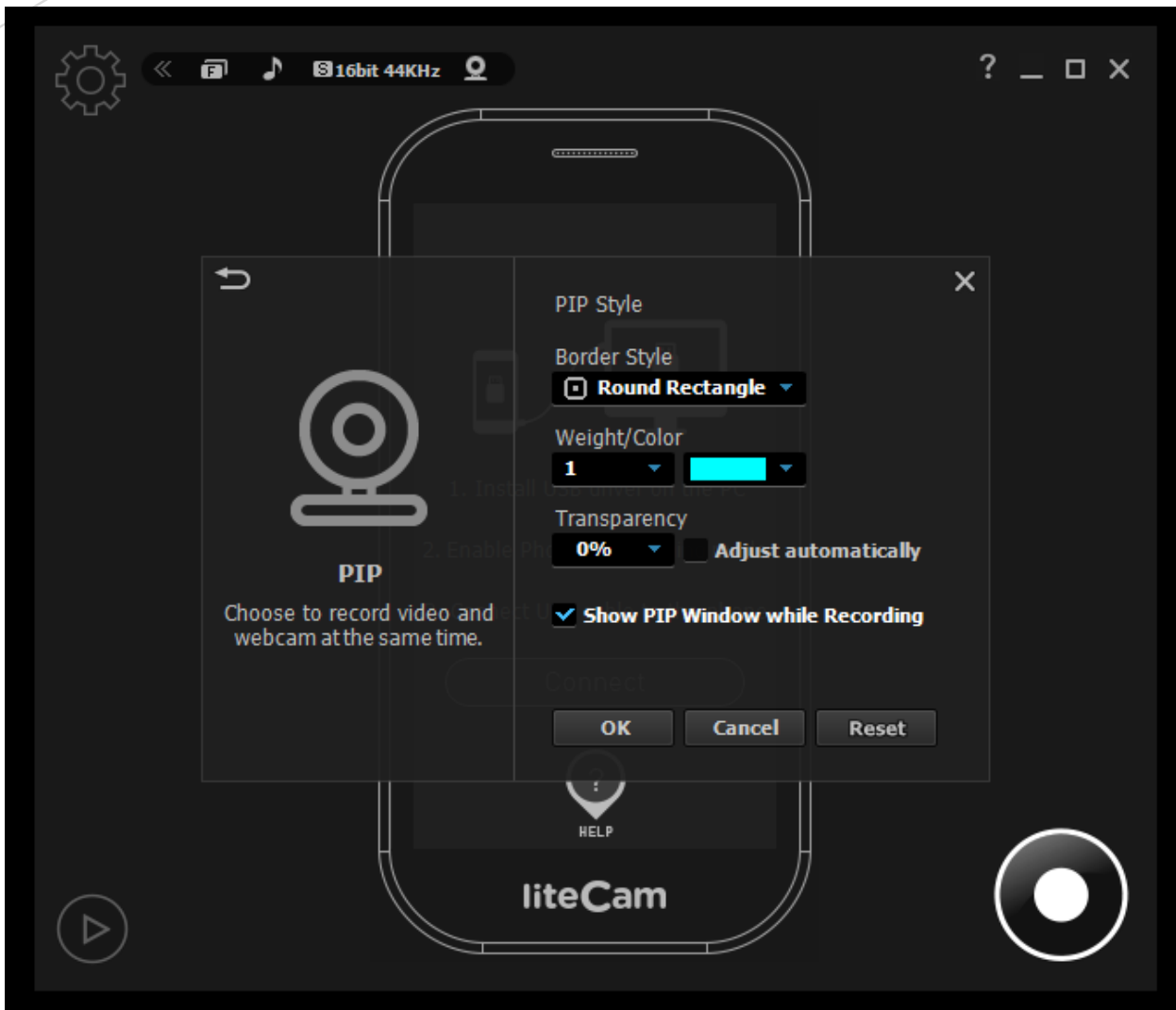
PIP window can sometimes interfere with recordings.

You can choose to either show or hide the PIP window while recording with the show/hide option. Follow the steps below.

Start liteCam HD > Options > PIP



Check "Show PIP Window While Recording"



Converting and Extraction

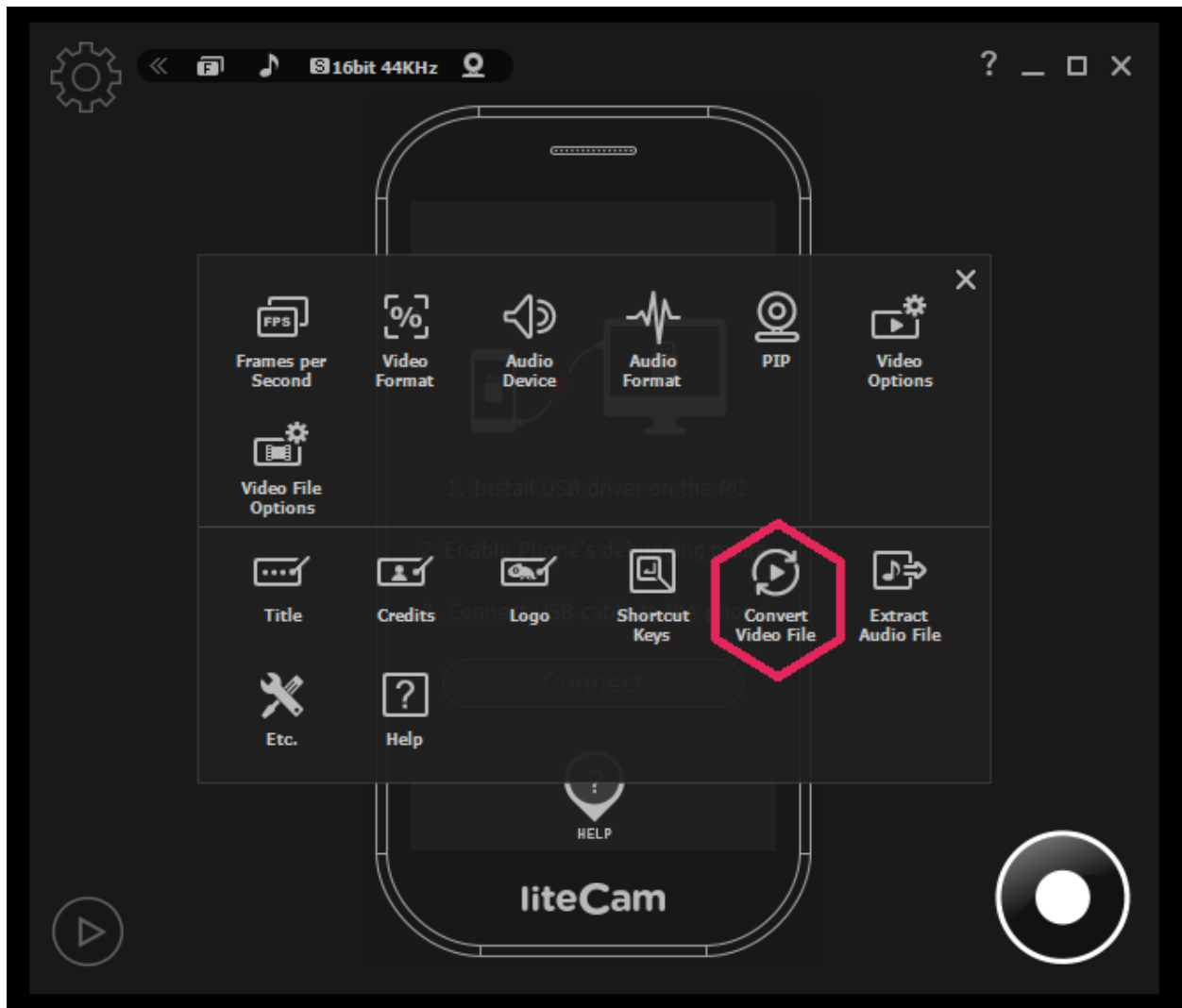
All video or audio recorded using liteCam HD can be converted into other file formats.

You can convert videos to MP4 or WMV file formats, while audio files can be converted to MP3, WAV, and WMA file formats.

1. Convert Video Files

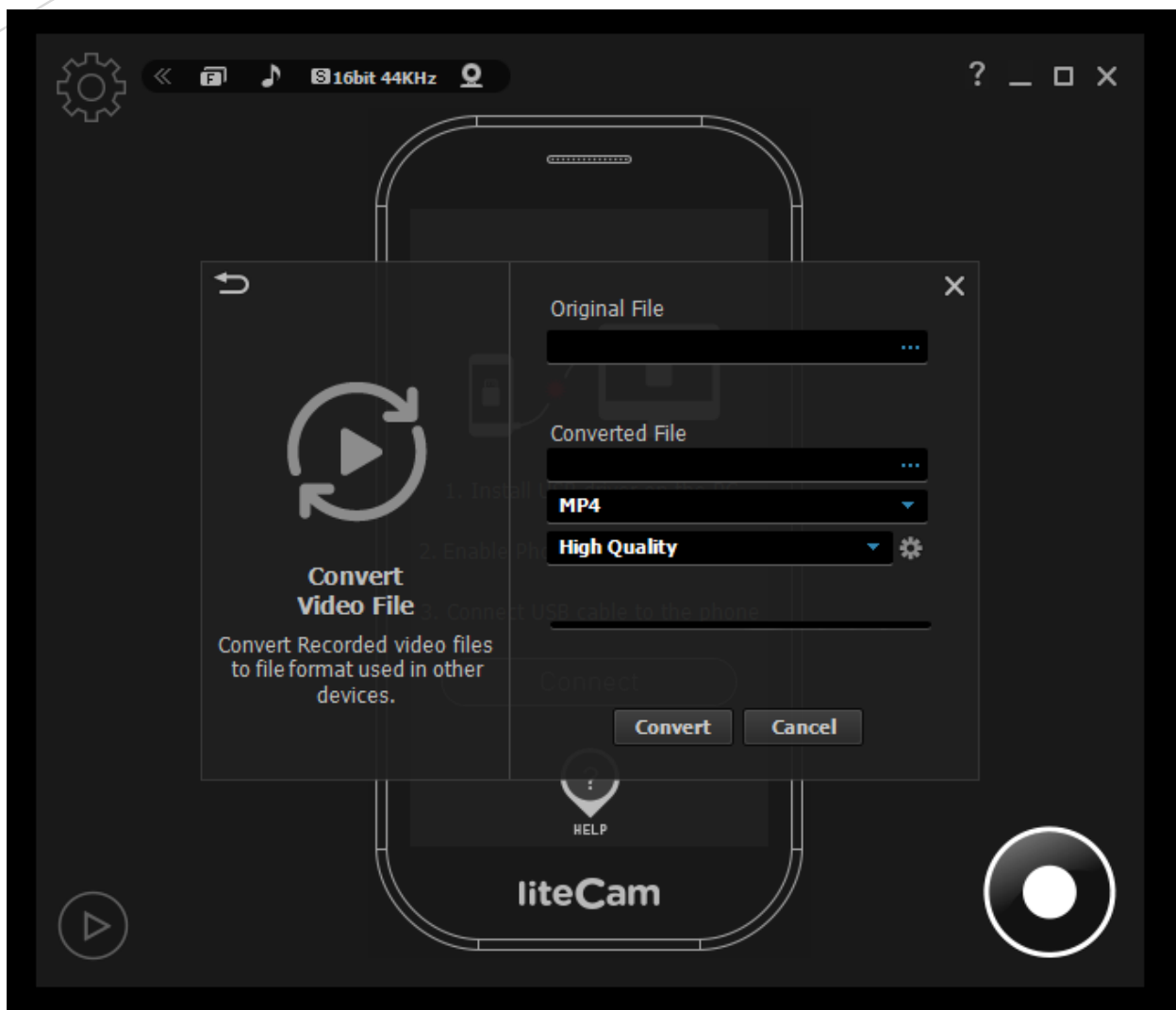
Convert the videos that you have recorded using liteCam Android. Convert your recorded videos to MP4 or WMV file formats.

Start liteCam > Convert Video Files



Convert video file settings

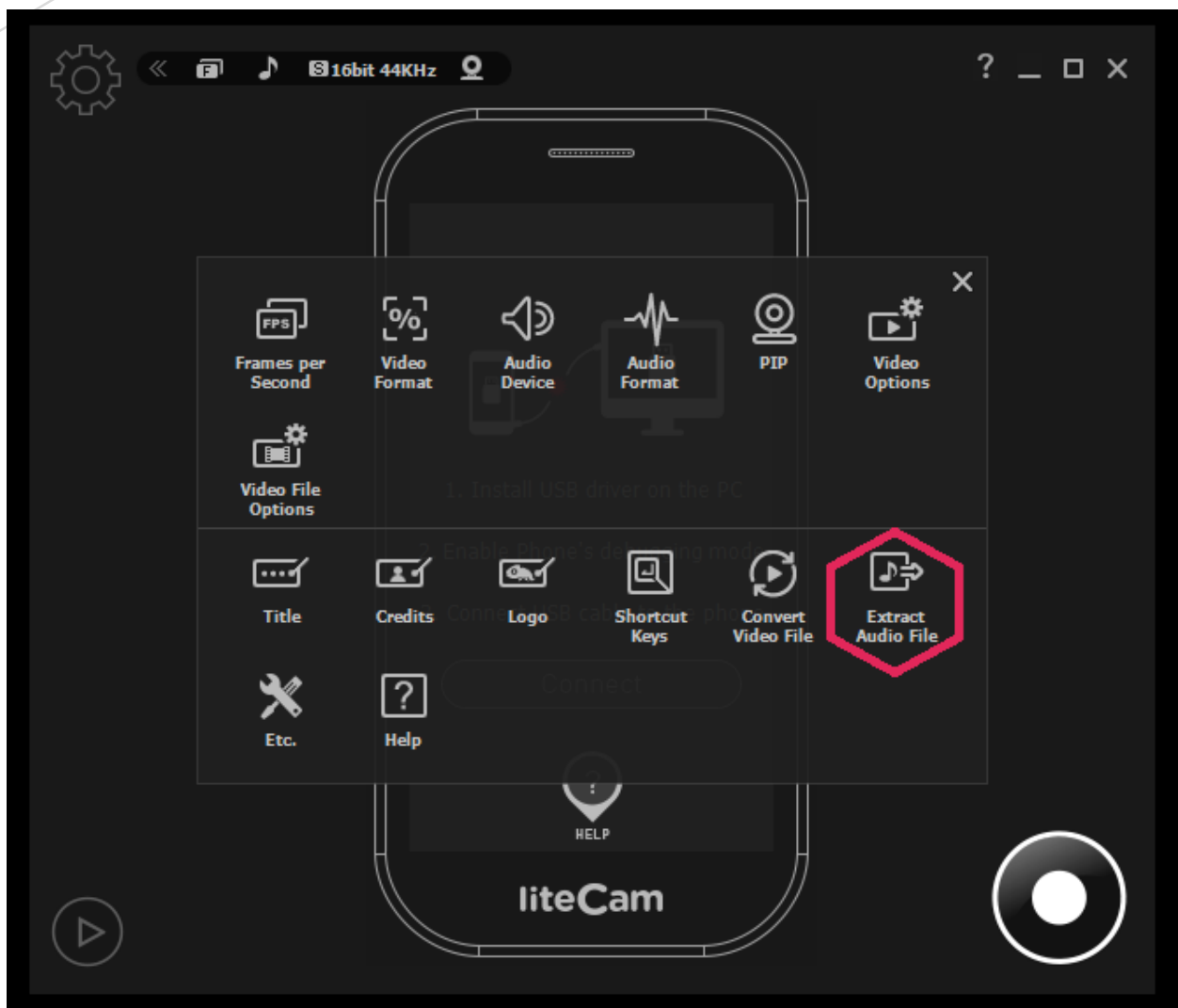
Select the file you have already recorded, then select the file format and output quality.

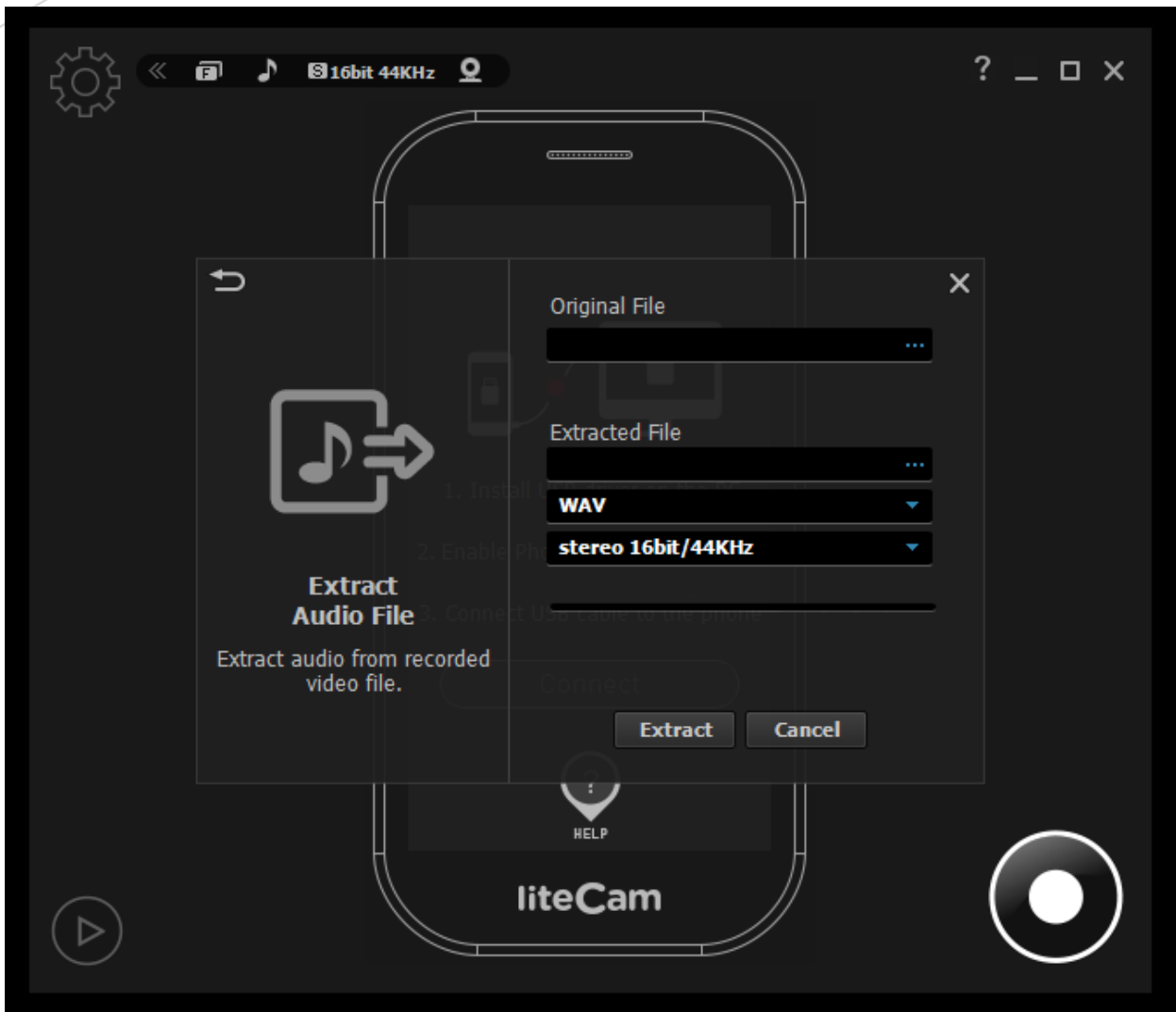


2. Extract Audio files

Any audio in your recorded videos can be extracted and saved as an audio file.

To extract audio from videos: *Start liteCam HD* > *Option* > *Extract Audio File*.





Other

Work and Log folder

The work folder is where all recorded files are saved. The default location of this folder is C:\Users\{UserName}\Documents\liteCam.

You can have your recorded files saved to any folder in the preferences.

The Log folder is where all the logs created during recording. The default location of this folder is C:\Users\{UserName}\Documents\liteCam\Log

This folder can also be changed at any time.

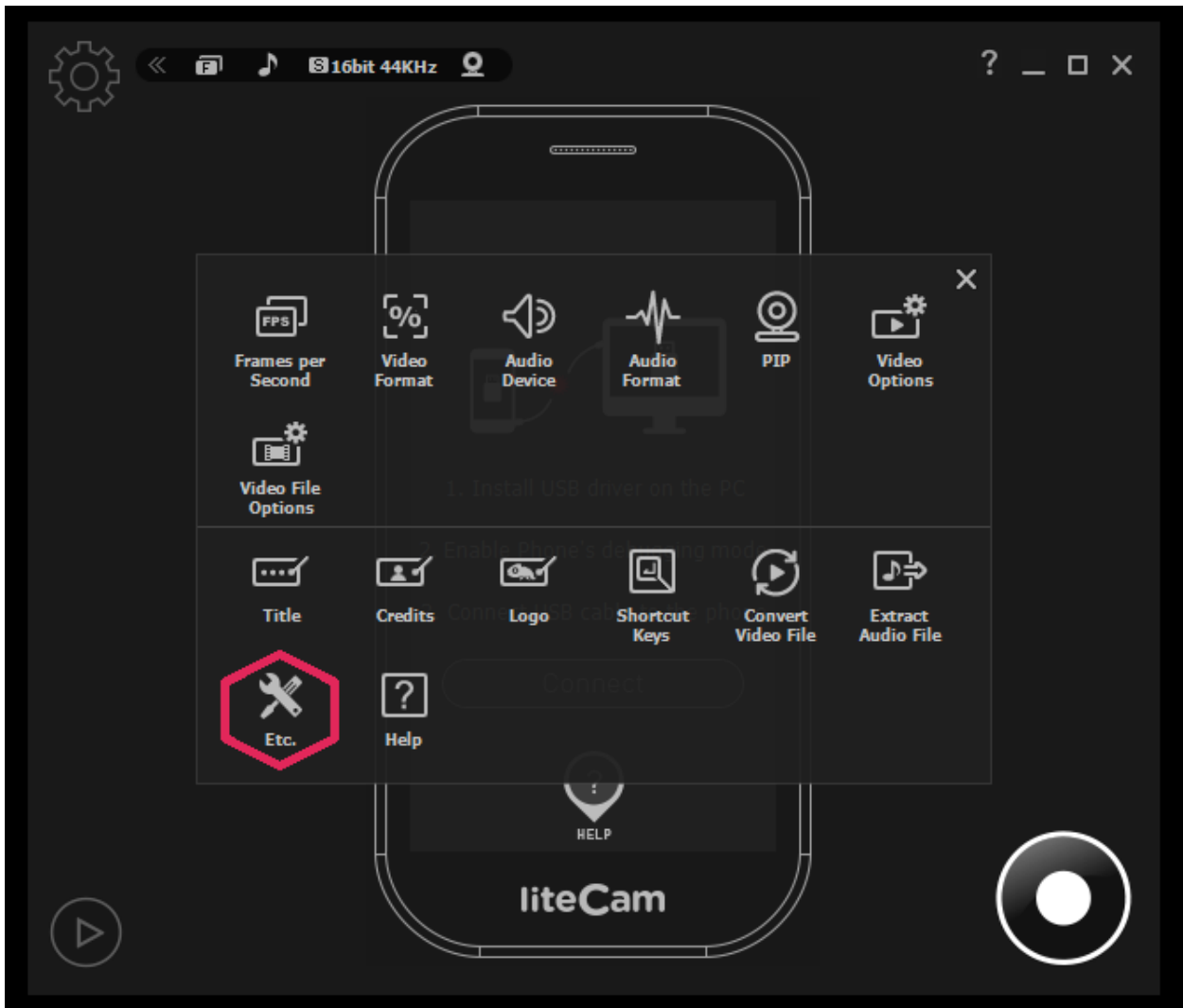
Options for Recording Window

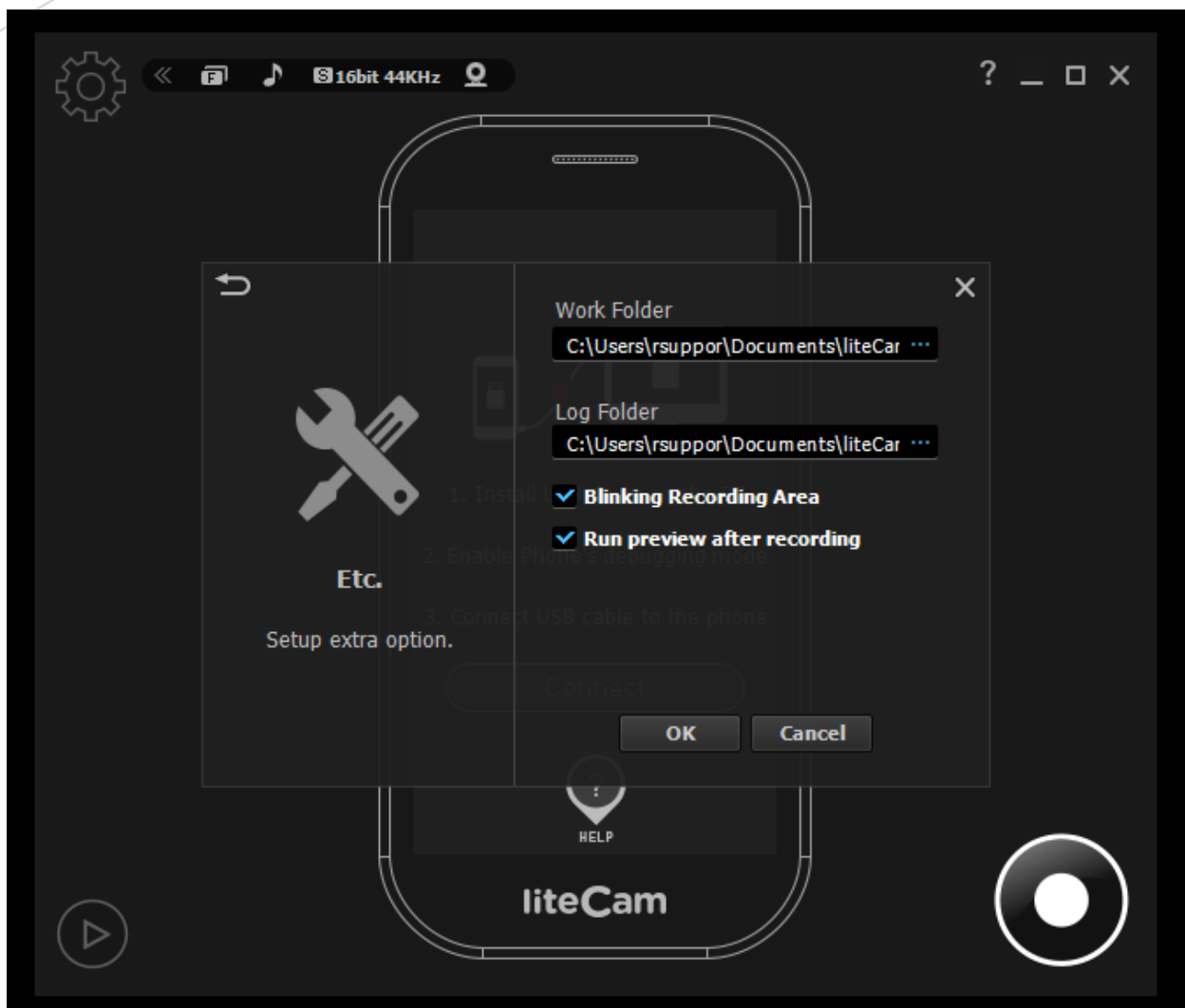
Other options for recording windows are:

Highlight Recording Area: this means that the selected area being recorded will be highlighted while recording.

Blinking Recording Area recording area will blink while recording.

Run Preview After Recording: The preview window will open as soon the recording is completed





Help

The Help window provides all information about liteCam HD.

You will find the following in Help:

Online Guide: User Manual is available online.

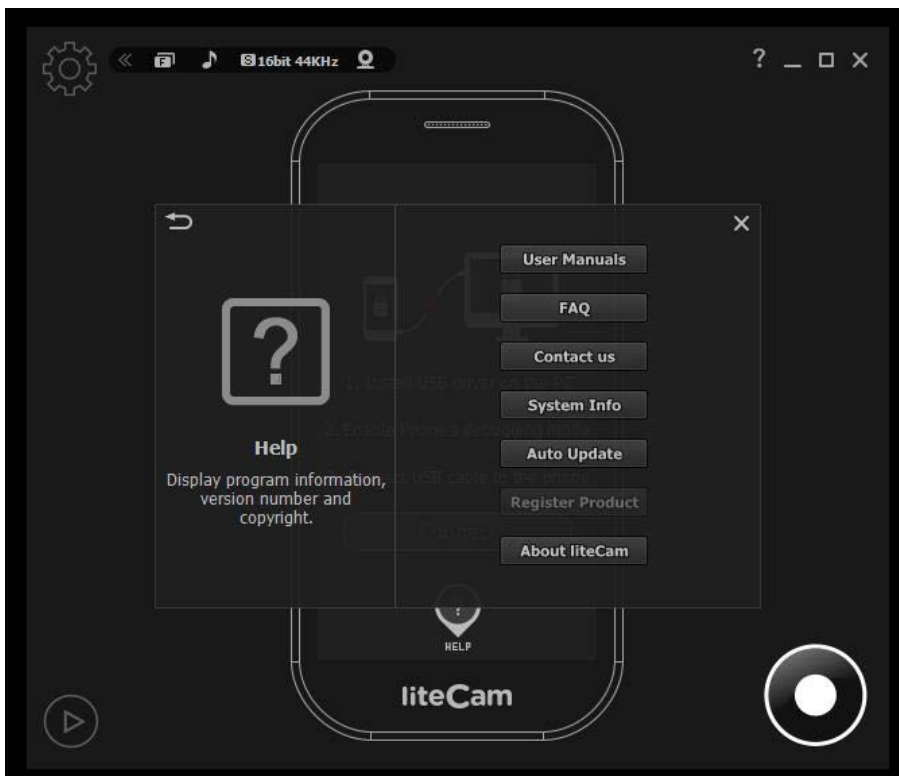
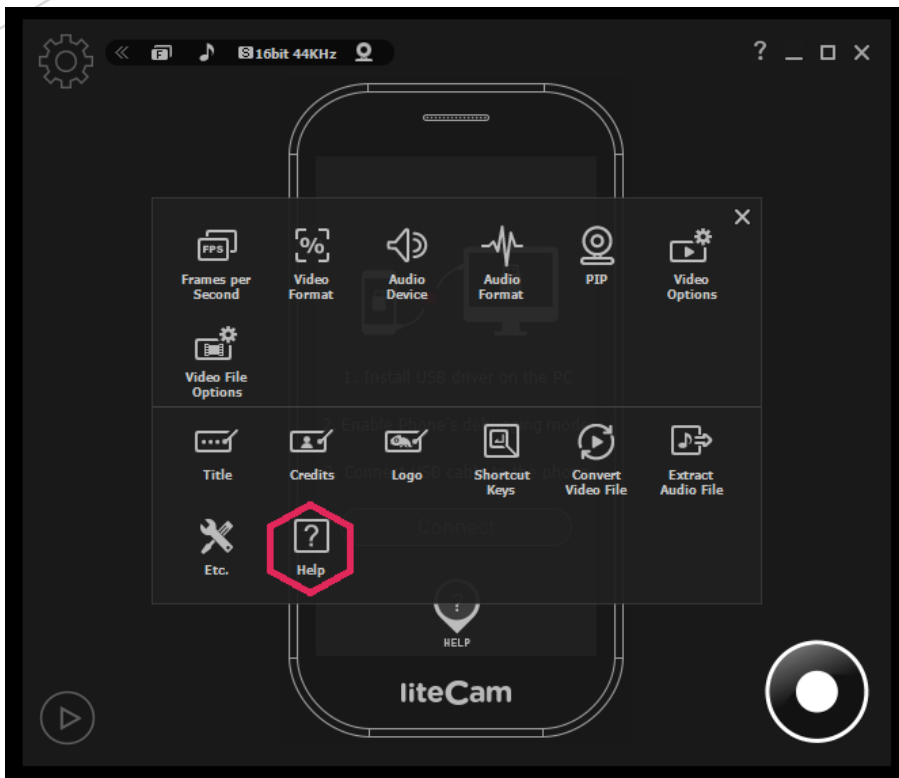
FAQ: frequently asked questions and issues.

Contact us: open the page for reporting your problem or inquiry

System info: your computer system information, helps if you are experiencing issues with liteCam Android.

Auto Update: liteCam Android will check for available updates.

About liteCam: Provides all information about liteCam Android, include Product, Version, License type/code and more information.



RSUPPORT *Wherever possible*

For more information about RSUPPORT, please visit
<http://www.rsupport.com>

Korea :

(138-724) 서울시 송파구 방이동 45번지 한미타워
15층, 16층

전 화 : +82-70-7011-3900

팩 스 : +82-2-479-4429

기술문의 : support.kr@rsupport.com

구매문의 : sales.kr@rsupport.com

기타문의 : info.kr@rsupport.com

Japan :

〒105-0001 東京都港区虎ノ門1-2-20
第3虎の門電気ビル

TEL : +81-3-3539-5761

FAX : +81-3-3539-5762

お問い合わせ : support.jp@rsupport.com

Sales : sales.jp@rsupport.com

Info : info.jp@rsupport.com

USA :

247 West 30th Street, Floor 4,
New York, NY 10001

Phone : +1-888-348-6330

Fax : +1-888-348-6340

Tech : support.us@rsupport.com

Sales : sales.us@rsupport.com

Info : info.us@rsupport.com

China :

北京市朝阳区东三环北路丙2号
天元港中心B座1005室

联系电话 +86-10-8256-1810

传真号码 +86-10-8441-7505

技术咨询 support.cn@rsupport.com

销售咨询 sales.cn@rsupport.com

其他咨询 info.cn@rsupport.com