

# Migrate to Microsoft Power Automate with Blueprint

Switch to Microsoft Power Automate with Blueprint 3x faster and at ¼ of the cost while improving your entire automation estate in the process



## 60-75%

Time and cost savings with Blueprint

According to recent research that Blueprint published, there is considerable interest in switching RPA tools with many organizations already in the process of migrating to or evaluating new platforms. Of those considering a new automation solution, Microsoft Power Automate is their most likely destination.

*“There’s a lot of organizations out there with messy automation estates seeing underwhelming ROI. It’s a big reason why we’re seeing so many migration motions to optimize those estates on Microsoft Power Automate.”*

- Frank Catone, Global Intelligent Automation Director, Avanade

There are a lot of reasons organizations are interested in moving their automation estates to Microsoft Power Automate but switching platforms can be a challenging, expensive, and time-consuming endeavor. This is because the way RPA platforms specify automated processes is very different. For an automation from a tool like Blue Prism to work in Microsoft Power Automate, that bot needs to be rebuilt from scratch. The most common way to do that was by rebuilding that bot manually. Someone had to investigate and understand exactly what the automated process does and then recode it so it can work in Microsoft Power Automate Desktop.

To migrate and rebuild a moderately complex automation manually, this can take 4-6 weeks and cost you upwards of \$20,000 while also increasing risk of introducing errors leading to outages down the road.

**That used to be the case. Not anymore.**

Blueprint provides an end-to-end RPA re-platforming solution that solves all the challenges of switching from your legacy RPA tool to Microsoft Power Automate, while delivering 60-75% in migration time and cost savings and improving your entire automation estate in the process.

# Reasons to Switch to Microsoft Power Automate

There are several reasons why organizations are looking to migrate from their current legacy RPA platforms into Microsoft Power Automate:

**1 Reduce Costs** – Microsoft Power Automate offers one of the most competitive price points available in the automation market. A free version of the software was even included in both Windows 10 and 11. In one case, Avanade – a major Global Services Integrator and Blueprint partner – was able to lower the total cost of ownership by 27% for their clients when they moved them to Microsoft Power Automate.

**2 Seamless Compatibility & Extensibility with all Microsoft Products** – Microsoft Power Automate enables organizations to automate more business processes and tasks because of its compatibility with all of Microsoft's suite of products. For example, Power Automate can open Microsoft Excel with one click instead of having to code 10 actions in another RPA tool when designing an automated process.

**3 Simplified and Accelerated Automation Delivery** – From a UX perspective, Power Automate delivers a much more accessible point of entry to automation for all business users. Microsoft's automation solution has the same look and feel of all Microsoft products, so there's a familiarity there to help orient all types of users looking to design automated processes.

**4 Increased ROI** – With a lower total cost of ownership and simplified and accelerated time to delivery, what naturally follows is a dramatic increase in returns and ROI from your automation investment when switching to Microsoft Power Automate. It's one of the ways the service integrators Blueprint partners with were able to increase ROI for one customer by 30% after they helped them switch to Power Automate with Blueprint's re-platforming solution.

## How Blueprint Accelerates & Simplifies Switching to Microsoft Power Automate While Optimizing Automation Estates

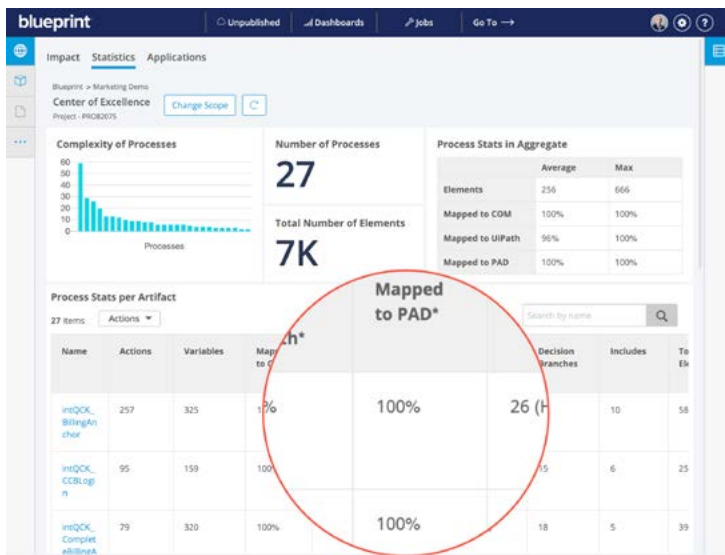
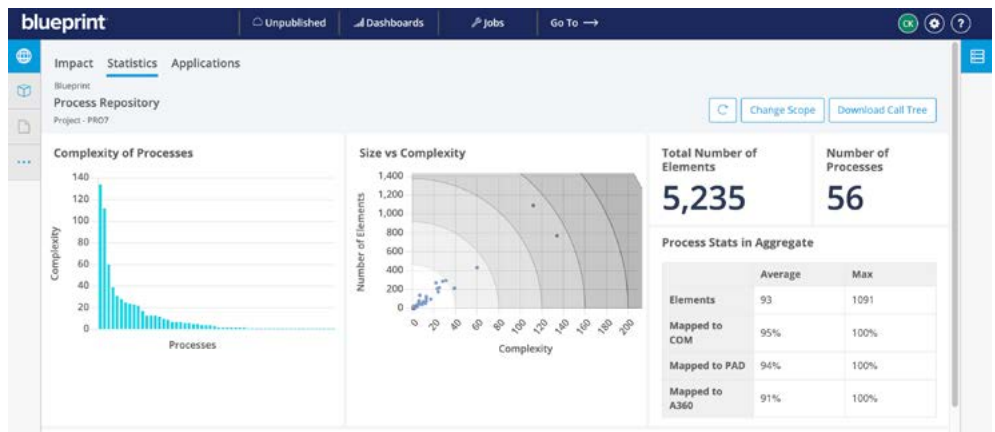
Blueprint ingests all of your automations from your legacy RPA tool. Once you've imported your automation files into Blueprint, you get instant analytics and data that provide invaluable insight into your entire automation estate, which can guide you to decisions that will lower operation costs. Data available from Blueprint's dashboards include:

- Complexity of your automations
- How many applications your automations interact with, in addition to the actions, variables, and decision branches of each process.
- Operational data for the automation such as:
  - Runs
  - Last time run
  - Number of issues
  - Utilization
  - Success rates

From there, you can optimize your automations and retire the ones not delivering justifiable returns, improving your entire automation estate while reducing operating costs in the process.

In the background, Blueprint's Common Object Model (COM) – an extensive library of commands, actions, and services across all leading automation platforms –

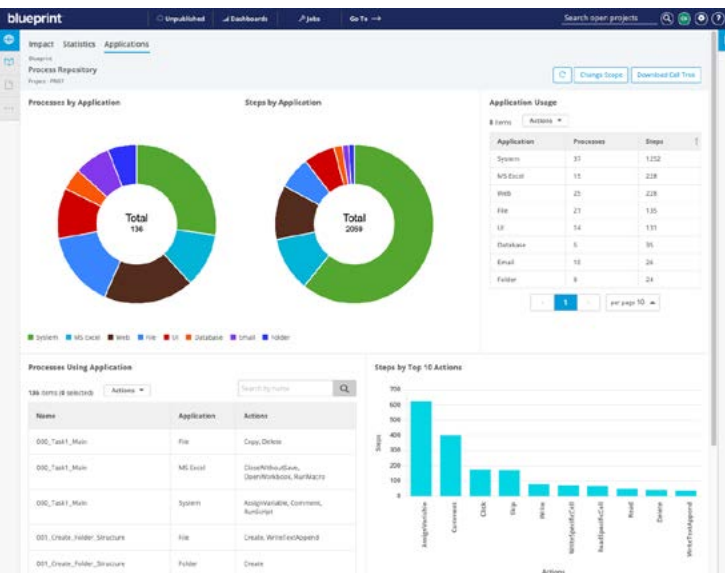
converts and maps each process into Microsoft Power Automate. You'll see the percentage that each process from your legacy RPA tool has already been mapped, requiring limited fit and finishing touches and removing the manual effort that delays and complicates so many upgrade projects.



After automations have been transitioned to Power Automate, Blueprint continues to deliver significant value.

With your automation estate in Blueprint, you now have a centralized, 360° view of your entire portfolio to optimize governance and control. A digital twin of your bot always resides in Blueprint so you can continuously optimize all your automations over time.

The insight that Blueprint's reporting and analytics dashboards deliver also enable you to continually monitor your automations to ensure you're keeping the total cost of ownership low while maximizing returns and scaling your entire automation practice across your organization.



[Speak to one of our solutions experts](#) today for a free personalized demo and discover how quick and easy switching to Microsoft Power Automate with Blueprint can be.

## About Blueprint

Blueprint Software Systems helps organizations design, assess, and improve their automated processes to increase the value their digital workers deliver while reducing operating costs. Blueprint's platform ingests entire automation portfolios and delivers invaluable insight and analytics into those estates, indicating where there are redundancies, overly complex automations, and re-platforming opportunities to migrate entire digital workforces to new generation intelligent automation platforms at a fraction of the cost and quicker than any other option available.

For more information, visit [www.blueprintsys.com](http://www.blueprintsys.com)