



For organizations looking to decrease their application downtime but are strangled with limited IT team resources and budgets, our solution is StarWind HyperConverged Appliance (HCA). StarWind HCA is a 100% software-defined hyperconverged platform built with Dell® OEM or StarWind-branded server platform. The burden of configuration, application migration, and integration is completely removed from the customer's shoulders – all is done by StarWind engineers at no extra cost.

**Furthermore, StarWind HCA is the only solution in the industry offering true HA with just a single physical node. And finally, HCA leads downtime and management efforts to a minimum since StarWind ProActive Premium Support monitors the cluster health 24/7/365, predicts failures, and reacts to them before an issue actually happens.**

PS: We'll match the price if you manage to build a DIY cluster with the same parts plus services at a lower cost. How? By sharing our partner discounts with you.

## Features

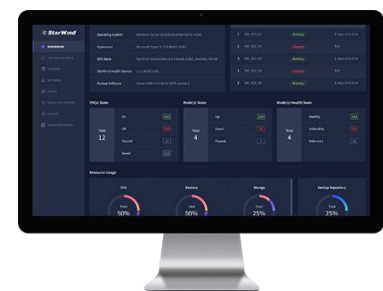
- Hybrid Cloud: clustering with active-active data replication between on-premises and AWS, Azure or any other public cloud
- Fault Tolerance, High Availability, Distributed RAM cache, Secure backups, Cloud DR and more
- RDMA: maximize performance and CPU cores available to your applications by eliminating I/O overhead

## Benefits

- Zero configuration, migration, and integration efforts – all done by StarWind Engineering Team at no extra cost
- HCA fits even the strictest budgets with a 2-node cluster price tag 2x lower than, say, a Tesla Model 3
- Constant uptime thanks to high fault tolerance rate: a 2-node system tolerates 1 node and 1 disk failure

## Power Management

StarWind Command Center delivers true single-pane-of-glass management and monitoring experience to HCA. We consolidated sophisticated dashboards that cover all the important information about the state of each environment component on a single screen. Imagine having just 1 browser tab to perform 20% of your IT-related routines that would otherwise take 80% of your time.



## Certified Refurbished

StarWind and xByte Technologies partner together to provide significant cost savings with their certified refurbished HCA options. This is a perfect fit for those looking to cut their virtualization deployment expenses. The refurbished HCA nodes carry the same warranty and support from our side so neither the warranty nor the quality is sacrificed. Check with your account representative to find out what options are available in your region.



### Split Digital LLC goes hyperconverged with StarWind to make their system highly available and easily scalable under a transparent pay-as-you-grow model

“We now have hyperconverged infrastructure that exactly fits what we wanted for extreme reliability and extreme uptime. This is perfect for a small company like us, as we can be much more nimble and responsive to our customers”

*Matthew Henson, the Founder*

## All Flash

**HCA All-Flash** is designed for small and mid-size SMB virtualized environments. All-flash storage configuration provides the best performance. Start with as little as one node and leverage StarWind Hybrid Cloud for HA and failover or get more nodes to build an onsite cluster. Also, you can scale up by adding more storage, memory, and interface cards. Clusters can also have mixed node configurations to adapt multiple workload requirements. With StarWind ProActive Premium Support included with the appliance, the responsibility for health status monitoring and availability of your applications is covered by StarWind Intelligent monitoring service and a team of professional support engineers.

### Model L

Model	L-AF 2.8	L-AF 4.8	L-AF 7.6	L-AF 9.6
<b>Chassis configuration</b>	1U 4/10 bays	1U 6/10 bays	1U 5/10 bays	1U 6/10 bays
<b>CPU</b>	Intel Xeon Scalable Family			
	2x Silver 4208 2.1GHz 8C/16T			
<b>RAM, GB</b>	64	128	128	128
<b>Usable Capacity, TB*</b>	2.8	4.8	7.6	9.6
<b>Scale Up Support</b>	Storage / NICs / RAM			
<b>Storage</b>	960GB/1.92TB SATA Mix Use SSD 2x 240GB SSD RAID1 Boot Storage			
<b>Networking</b>	4x1 GbE 2x10 GbE (Private, RDMA-enabled)		2x1 GbE + 2x10 GbE NDC 2x25 GbE (Private, RDMA-enabled)	
<b>ProActive Services</b>	StarWind ProActive Premium Support** Included by default			
<b>Deduplication and Compression</b>	Yes			

## Model XL

Model	XL-AF 13.4	XL-AF 15.3	XL-AF 19.2	XL-AF 23
Chassis configuration	2U 8/24 bays	2U 9/24 bays	2U 11/24 bays	2U 13/24 bays
CPU	Intel Xeon Scalable Family			
	2x Gold 5218 2.3GHz 16C/32T			
RAM, GB	192	256	320	512
Scale Up Support	Storage / NICs / RAM			
Usable Capacity, TB*	13.4	15.3	19.2	23
Storage	960GB/1.92TB SATA Mix Use SSD 2x 240GB SSD RAID1 Boot Storage			
Networking	2x1 GbE + 2x10 GbE NDC 2x25 GbE (Private, RDMA-enabled)			
ProActive Services	StarWind ProActive Premium Support** Included by default			
Deduplication and Compression	Yes			

\*Approximate capacity

\*\*Read more about StarWind ProActive Premium Support [here](#)

**New!**

**All-Flash StarWind HCAs** now available with all-NVMe storage setup for use with Microsoft Hyper-V. Please inquire with your sales representative or partner for more details.

## Hybrid

**HCA Hybrid** utilizes automated storage tiering to handle performance-intensive workloads in a cost-efficient manner. It provides an excellent balance between performance and cost. These models are built to deliver high storage capacity and great performance without having to go all-flash. Start with as little as one node and leverage StarWind Hybrid Cloud for HA and failover or get more nodes to build an onsite cluster. Also, you can scale up by adding more storage, memory, and interface cards. Clusters can also have mixed node configurations to adapt multiple workload requirements. With StarWind ProActive Premium Support included with the appliance, the responsibility for health status monitoring and availability of your applications is covered by StarWind Intelligent monitoring service and a team of professional support engineers.

### Model L

### Model XL

Model Name	L-H 5.9	XL-H 8.8	XL-H 11.8	XL-H 16.8	XL-H 21.7	XL-H 37.6
<b>Chassis Configuration</b>	1U 4/4 bays	2U 10/12 bays	2U 9/12 bays	2U 12/24 bays***	2U 12/24 bays***	2U 20/24 bays***
<b>CPU</b>	Intel Xeon Scalable Family					
		2x Silver 4208 2.1G 8C/16T	128	128	256	256
<b>RAM, GB</b>	96	128	128	256	256	512
<b>Scale Up Support</b>	RAM	Disks / NICs / RAM		Disks / NICs / RAM***		
<b>Usable Capacity, TB*</b>	5.9	8.8	11.8	16.8	21.7	37.6
<b>Storage</b>	2TB / 4TB 7.2K NLSAS 960 GB / 1.92 TB SSD SATA Mix Use 2x 240GB SSD RAID1 Boot Storage					
<b>Networking</b>	2x1 + 2x10 GbE	2x1 + 2x10 GbE 2x25 GbE (Private, RDMA-enabled)				
<b>ProActive Services</b>	StarWind ProActive Premium Support** Included by default					
<b>Deduplication and Compression</b>	Yes					

\*Approximate capacity

\*\*Read more about StarWind ProActive Premium Support [here](#)

\*\*\*Chassis Configuration and Scale Up Support may vary

Switchless scale-out options are available for certain models. For additional details please contact your sales manager.

## Disk

**HCA D** is the high-capacity option with the best \$/GB value. These models are built to provide high storage capacity and moderate compute power for capacity-hungry applications. Start with as little as one node and leverage StarWind Hybrid Cloud for HA and failover or get more nodes to build an onsite cluster. Also, you can scale up by adding more storage, memory, and interface cards. Clusters can also have mixed node configurations to adapt multiple workload requirements. With StarWind ProActive Premium Support included with the appliance, the responsibility for health status monitoring and availability of your applications is covered by StarWind Intelligent monitoring service and a team of professional support engineers.

	Model L			Model XL		
Model Name	L-4D	XL-8D	XL-16D	XL-24D	XL-32D	XL-48D
<b>Chassis Configuration</b>	1U 4/4 bays	2U 8/12 bays	2U 8/12 bays	2U 12/12 bays	2U 8/12 bays	2U 12/12 bays
<b>CPU</b>	Intel Xeon Scalable Family					
	2x Bronze 3204 1.9G 6C/6T				2x Silver 4208 2.1G 8C/16T	
<b>RAM, GB</b>	32	64	96	128	128	192
<b>Scale Up Support</b>	RAM	Disks / NICs / RAM		NICs / RAM	Disks / NICs / RAM	NICs / RAM
<b>Usable Capacity, TB*</b>	4	8	16	24	32	48
<b>Storage</b>	2TB 7.2K NLSAS 2x 240GB SSD RAID1Boot		4TB 7.2K NLSAS 2x 240GB SSD RAID1 Boot		8TB 7.2K NLSAS 2x 240GB SSD RAID1 Boot	
<b>Networking</b>	2x1 GbE (LOM) 4x1 GbE			4x1 GbE 2x10 GbE (Private)		
<b>ProActive Services</b>	StarWind ProActive Premium Support** Included by default					
<b>Deduplication and Compression</b>	Yes					

\*Approximate capacity

\*\*\*Read more about StarWind ProActive Premium Support [here](#)

Switchless scale-out options are available for certain models. For additional details please contact your sales manager.

**Supported Hypervisors:** Microsoft Hyper-V, VMware vSphere, KVM (*coming soon*)

**Supported Operating Systems:** Microsoft Windows Server 2012, 2012 R2, 2016, 2019

**Supported Container Platforms:** Docker

**Supported IaaS Platforms:** OVH vCloud Air

**Supported Storage Protocols:** iSCSI, iSER, SMB3, SMB Direct, NFSv4.1, NVMe-oF

**Supported Storage Management & Integrations:** SMI-S, Wvols, Redfish™, Swordfish™

**Recommended Switches:** Mellanox MSN2100, MSN2010, Dell S4810

**Virtual Machine Backup and Replication:** Veeam® Backup and Replication™ V9.5 U4

**Monitoring, Reporting and Capacity Planning:** Veeam® ONE™ V9.5

**Management and Security:** StarWind Web Management, StarWind Command Center, StarWind ProActive Services\*

**Optional Components:** 5nine Manager; Microsoft SCVMM, Windows Admin Center; VMware vSphere Operations Management

\*ProActive services are available in specific countries. Please contact your account manager or distributor for more details.

System configurations presented in this document are for reference only. For exact system configuration please inquire with your Account Manager.